

RNAV (RNP) Z RWY 36R

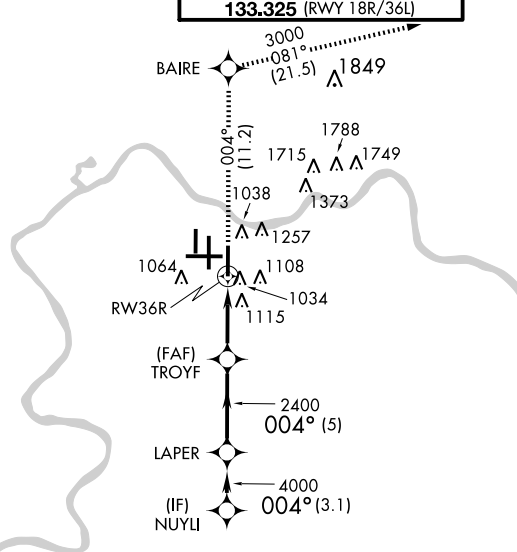
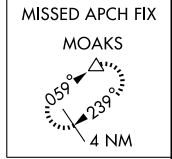
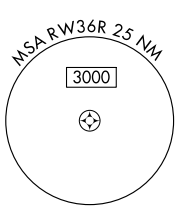
COVINGTON/ CINCINNATI/NORTHERN KENTUCKY INTL (CVG)

APP CRS	Rwy Idg	10000
004°	TDZE	896
	Apt Elev	896

NA GPS Required. For uncompensated Baro-VNAV systems, procedure NA below -16°C (4°F) or above 47°C (116°F). For inoperative ALSF, increase RNP 0.16 and RNP 0.20 visibility to RVR 6000, RNP 0.30 visibility to 1½. Visibility reduction by helicopters NA.

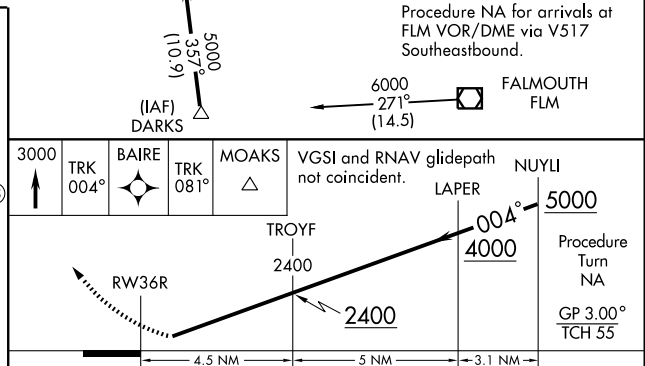
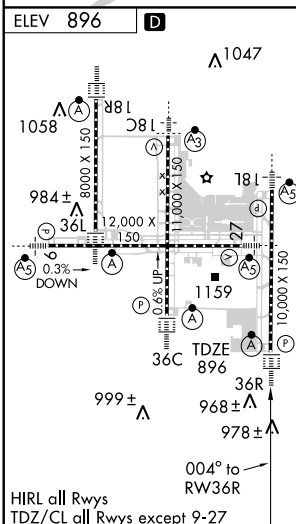
ALSF-2 MISSED APPROACH: Climb to 3000 via 004° track to BAIRE and via 081° track to MOAKS and hold.

ATIS	CINCINNATI APP CON	CINCINNATI TOWER	GND CON	CLNC DEL
ARR 134.375	DEP 135.3	119.7 254.25 (090°-269°)	121.7 (WEST)	127.175
	123.875 363.15 (270°-089°)	118.3 (RWYS 18C/36C, 09/27)	121.3 (EAST)	
		133.325 (RWY 18R/36L)		



Procedure NA for arrivals at DARKS via V97 Southbound.

Procedure NA for arrivals at FLM VOR/DME via V517 Southeastbound.



CATEGORY	A	B	C	D
RNP 0.16 DA		1284/40	388 (400-¾)	
RNP 0.20 DA		1295/50	399 (400-1)	
RNP 0.30 DA		1329/50	433 (500-1)	

SPECIAL AIRCRAFT & AIRCREW AUTHORIZATION REQUIRED

RNAV (RNP) Z RWY 36R

SE-1, 11 MAR 2010 to 08 APR 2010

SE-1, 11 MAR 2010 to 08 APR 2010