

RNAV (RNP) Z RWY 9

COVINGTON/CINCINNATI/NORTHERN KENTUCKY INTL (CVG)

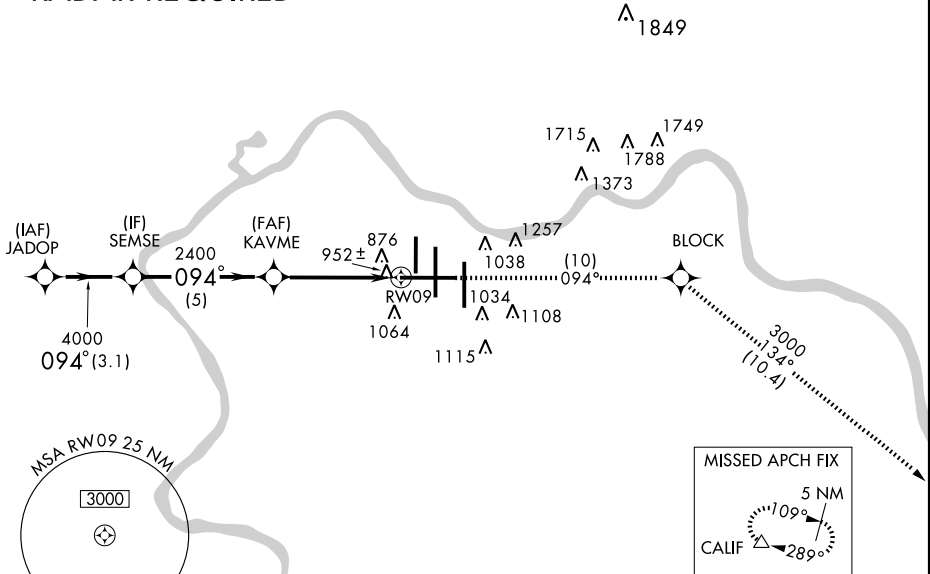
APP CRS	Rwy Idg	11880
094°	TDZE	883
	Apt Elev	896

GPS Required. For uncompensated Baro-VNAV systems, procedure NA below -16° C (4° F) or above 47° C (116° F). For inoperative MALS, increase RNP 0.18 visibility to RVR 5000, RNP 0.30 visibility to RVR 6000.

MALS MISSED APPROACH: Climb to 3000 via 094° track to BLOCK and via 134° track to CALIF and hold.

ATIS	CINCINNATI APP CON	CINCINNATI TOWER	GND CON	CLNC DEL
ARR 134.375 DEP 135.3	119.7 254.25 (090°- 269°) 123.875 363.15 (270°- 089°)	118.975 360.85 (RWY 18L/36R) 118.3 (RWYS 18C/36C, 09/27) 133.325 (RWY 18R/36L)	121.7 (WEST) 121.3 (EAST)	127.175

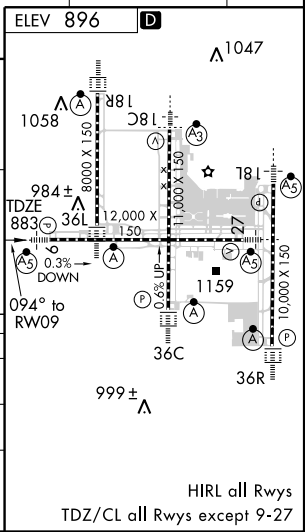
RADAR REQUIRED



SE-1, 19 NOV 2009 to 17 DEC 2009

SE-1, 19 NOV 2009 to 17 DEC 2009

JADOP	SEMSE	KAVME	RWY 09
5000	4000	2400	
GP 3.00° TCH 52			
VGSi and RNAV glidepath not coincident.			
3.1 NM	5 NM	4.5 NM	
CATEGORY	A	B	C
RNP 0.18 DA	1199/24		316 (400-½)
RNP 0.30 DA	1233/40		350 (400-¾)



SPECIAL AIRCRAFT & AIRCREW AUTHORIZATION REQUIRED

HIRL all Rwys
TDZ/CL all Rwys except 9-27

RNAV (RNP) Z RWY 9