

COVINGTON, KENTUCKY

AL-655 (FAA)

RNAV (GPS) Y RWY 18C

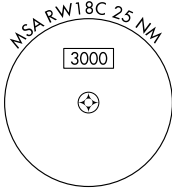
COVINGTON / CINCINNATI/NORTHERN KENTUCKY INTL (CVG)

WAAS CH 86803 W 18B	APP CRS 184°	Rwy Idg 11000 TDZE 875 Apt Elev 896
---	------------------------	--

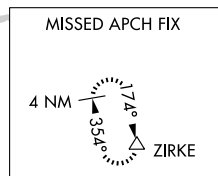
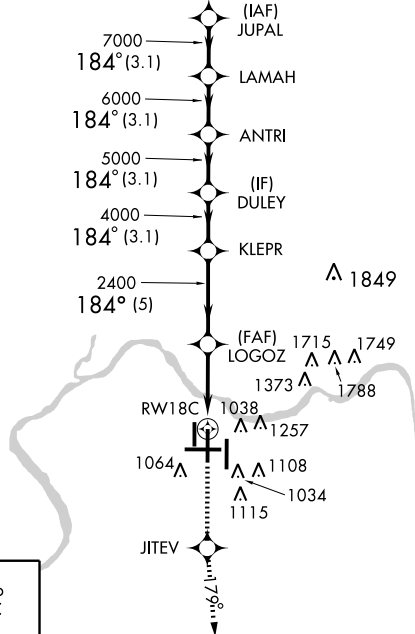
For uncompensated Baro-VNAV systems, LNAV/VNAV NA below -16°C (4°F) or above 47°C (116°F).
DME/DME RNP-0.3 NA.

SSALR MISSED APPROACH: Climb to 3000 direct JITEV and via 179° track to ZIRKE and hold.

ATIS ARR 134.375 DEP 135.3	CINCINNATI APP CON 119.7 254.25 (090°- 269°) 123.875 363.15 (270°- 089°)	CINCINNATI TOWER 118.975 360.85 (RWY 18L/36R) 118.3 (RWYS 18C/36C, 09/27) 133.325 (RWY 18R/36L)	GND CON 121.7 (WEST) 121.3 (EAST)	CLNC DEL 127.175
---	--	---	---	----------------------------

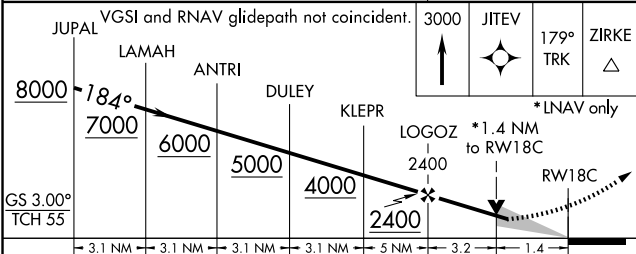
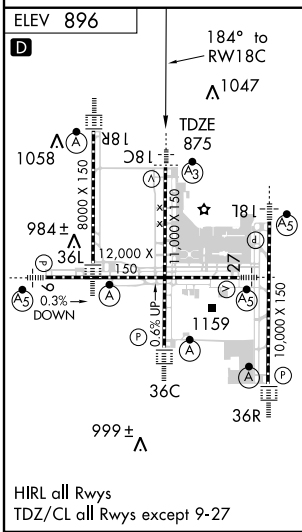


RADAR REQUIRED



SE-1, 19 NOV 2009 to 17 DEC 2009

SE-1, 19 NOV 2009 to 17 DEC 2009



CATEGORY	A	B	C	D
LPV DA	1075/24		200 (200-1/2)	
LNAV/VNAV DA	1398/60		523 (600-1 1/4)	
LNAV MDA	1360/24	485 (500-1/2)	1360/40 485 (500-3/4)	1360/50 485 (500-1)
CIRCLING	1460-1	564 (600-1)	1460-1 1/2 564 (600-1 1/2)	1560-2 664 (700-2)

COVINGTON, KENTUCKY
Amdt 1 08325

COVINGTON / CINCINNATI/NORTHERN KENTUCKY INTL (CVG)
39°03'N - 84°40'W

RNAV (GPS) Y RWY 18C