


# RNAV (GPS) Y RWY 18L

COVINGTON/CINCINNATI/NORTHERN KENTUCKY INTL (CVG)

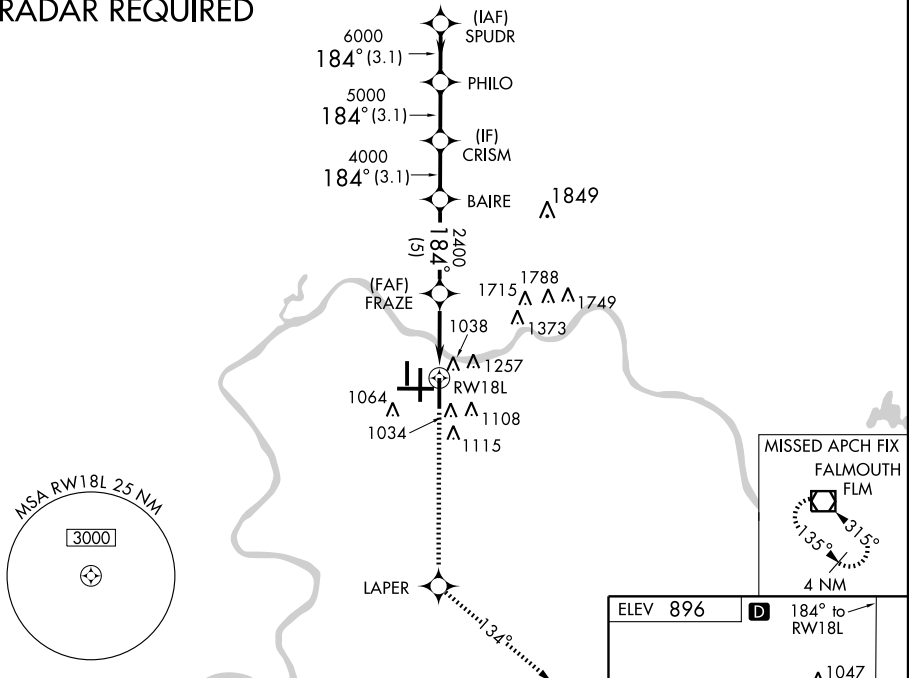
WAAS CH <b>40103</b> W <b>18A</b>	APP CRS <b>184°</b>	Rwy Idg <b>10000</b> TDZE <b>889</b> Apt Elev <b>896</b>
---	------------------------	--

▼ For uncompensated Baro-VNAV systems, LNAV/VNAV NA below -16° C (4° F) or above 47° C (116° F). DME/DME RNP-0.3 NA.

MALSR  MISSED APPROACH: Climb to 3000 direct LAPER and via 134° track to FLM VOR/DME and hold.

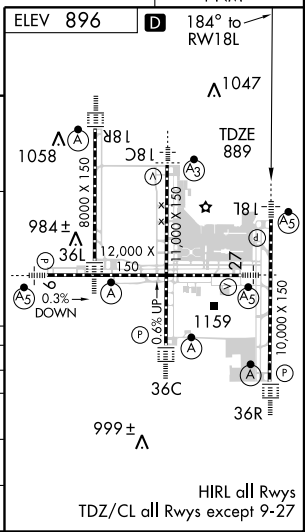
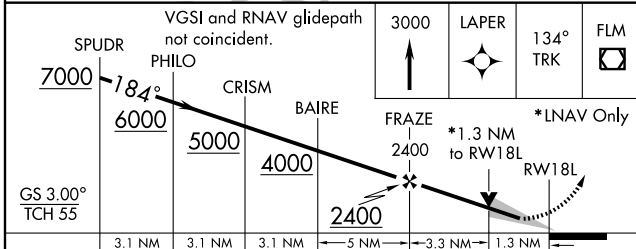
ATIS ARR <b>134.375</b> DEP <b>135.3</b>	CINCINNATI APP CON <b>119.7 254.25</b> (090°- 269°) <b>123.875 363.15</b> (270°- 089°)	CINCINNATI TOWER <b>118.975 360.85</b> (RWY 18L/36R) <b>118.3</b> (RWYS 18C/36C, 09/27) <b>133.325</b> (RWY 18R/36L)	GND CON <b>121.7</b> (WEST) <b>121.3</b> (EAST)	CLNC DEL <b>127.175</b>
---	--	---	---	----------------------------

## RADAR REQUIRED



SE-1, 19 NOV 2009 to 17 DEC 2009

SE-1, 19 NOV 2009 to 17 DEC 2009



SPUDR	PHILO	CRISM	BAIRE	FRAZE	RWY 18L
7000	6000	5000	4000	2400	
184°					
3.1 NM	3.1 NM	3.1 NM	5 NM	3.3 NM	1.3 NM
CATEGORY A B C D					
LPV DA	1089/24		200 (200-1/2)		
LNAV/VNAV DA	1395/60		506 (500-1/4)		
LNAV MDA	1360/24 471 (500-1/2)		1360/40 471 (500-3/4)		1360/50 471 (500-1)
CIRCLING	1460-1 564 (600-1)		1460-1/2 564 (600-1/2)		1560-2 664 (700-2)

HIRL all Rws  
TDZ/CL all Rws except 9-27