

COVINGTON, KENTUCKY

AL-655 (FAA)

RNAV (GPS) Y RWY 18R

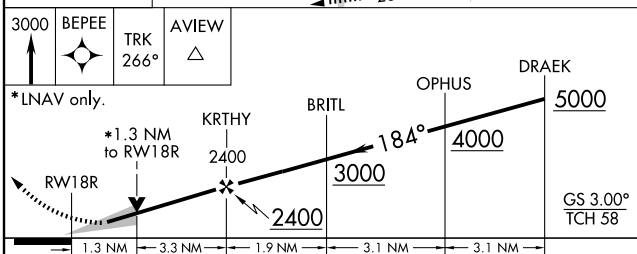
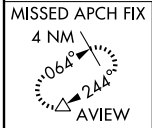
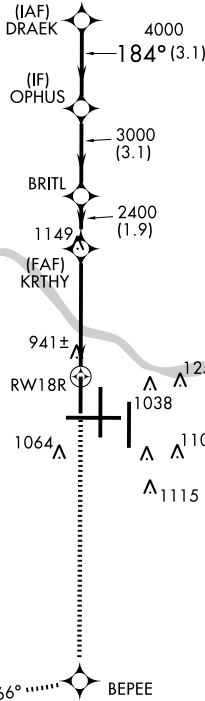
COVINGTON/ CINCINNATI/NORTHERN KENTUCKY INTL (CVG)

WAAS CH 58099 W18D	APP CRS 184°	Rwy Idg TDZE 8000 868 Apt Elev 896
--	------------------------	--

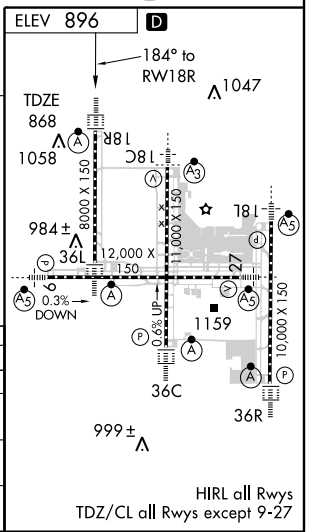
For uncompensated Baro-VNAV systems, LNAV/VNAV NA below -16°C (4°F) or above 47°C (116°F). DME/DME RNP-0.3 NA.	ALSF-2 	MISSED APPROACH: Climb to 3000 direct BEPEE and via 266° track to AVIEW and hold.
--	------------	---

ATIS ARR 134.375 DEP 135.3	CINCINNATI APP CON 119.7 254.25 (090°- 269°) 123.875 363.15 (270°- 089°)	CINCINNATI TOWER 118.975 360.85 (RWY 18L/36R) 118.3 (RWYS 18C/36C, 09/27) 133.325 (RWY 18R/36L)	GND CON 121.7 (WEST) 121.3 (EAST)	CLNC DEL 127.175
---	--	---	---	----------------------------

RADAR REQUIRED



CATEGORY LPV DA LNAV/VNAV DA LNAV MDA CIRCLING	A 1068/24 1321/50 1320/24 1460-1	B 200 (200-½) 453 (500-1) 452 (500-½) 564 (600-1)	C 200 (200-½) 452 (500-¾) 564 (600-½)	D 5000 1320/50 452 (500-1) 1560-2 664 (700-2)
--	--	---	--	--



COVINGTON, KENTUCKY
Amdt 1 08325

COVINGTON/ CINCINNATI/NORTHERN KENTUCKY INTL (CVG)
39°03'N-84°40'W
RNAV (GPS) Y RWY 18R

SE-1, 19 NOV 2009 to 17 DEC 2009

SE-1, 19 NOV 2009 to 17 DEC 2009