

COVINGTON, KENTUCKY

AL-655 (FAA)

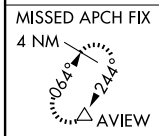
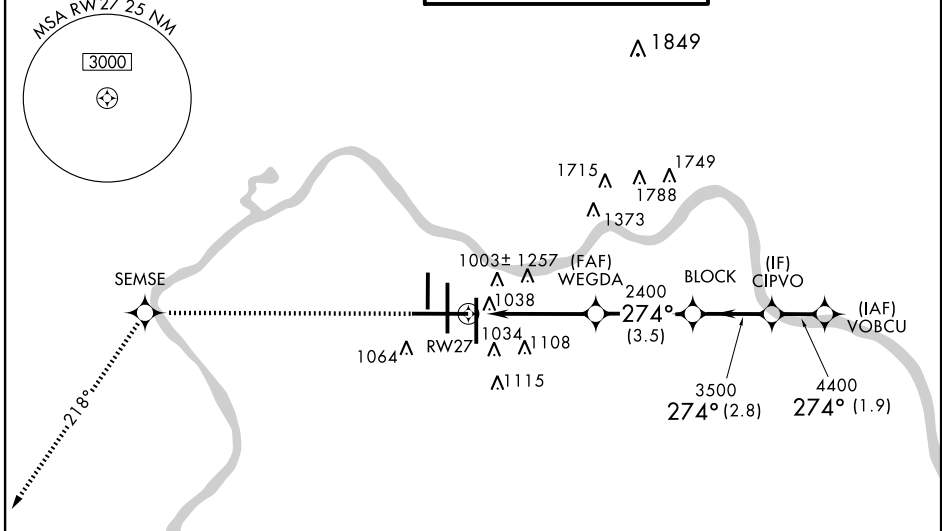
WAAS CH 86809 W27A	APP CRS 274°	Rwy Idg 12000 TDZE 875 Apt Elev 896
--	------------------------	--

RNAV (GPS) Y RWY 27

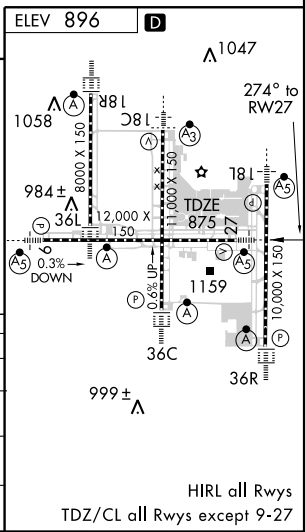
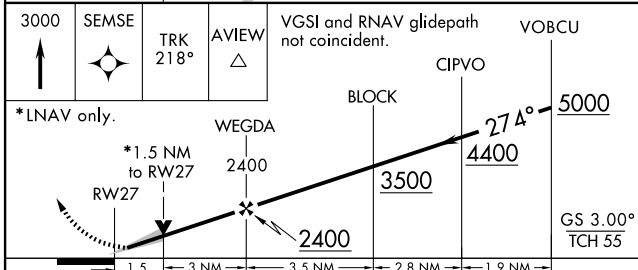
COVINGTON/CINCINNATI/NORTHERN KENTUCKY INTL (CVG)

	For uncompensated Baro-VNAV systems, LNAV/VNAV NA below -16° C (4° F) or above 47° C (116° F). DME/DME RNP-0.3 NA.	MALSR 	MISSED APPROACH: Climb to 3000 direct SEMSE then via 218° track to AVIEW and hold.
		MISSED APPROACH: Climb to 3000 direct SEMSE then via 218° track to AVIEW and hold.	

ATIS ARR 134.375 DEP 135.3	CINCINNATI APP CON 119.7 254.25 (090°- 269°) 123.875 363.15 (270°- 089°)	CINCINNATI TOWER 118.975 360.85 (RWY 18L/36R) 118.3 (RWYS 18C/36C, 09/27) 133.325 (RWY 18R/36L)	GND CON 121.7 (WEST) 121.3 (EAST)	CLNC DEL 127.175
---	--	---	---	----------------------------



RADAR REQUIRED



CATEGORY	A	B	C	D
LPV DA		1075/24	200 (200-½)	
LNAV/VNAV DA		1349/60	474 (500-1¼)	
LNAV MDA	1420/24	545 (600-½)	1420/50 545 (600-1)	1420/60 545 (600-1¼)
CIRCLING	1460-1	564 (600-1)	1460-1½ 564 (600-1½)	1560-2 664 (700-2)

COVINGTON, KENTUCKY
Orig 08325

COVINGTON/CINCINNATI/NORTHERN KENTUCKY INTL (CVG)
39°03'N-84°40'W

RNAV (GPS) Y RWY 27

SE-1, 19 NOV 2009 to 17 DEC 2009

SE-1, 19 NOV 2009 to 17 DEC 2009

HIRL all Rwys
TDZ/CL all Rwys except 9-27