

COVINGTON, KENTUCKY

AL-655 (FAA)

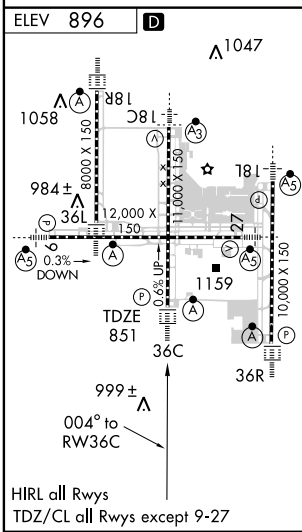
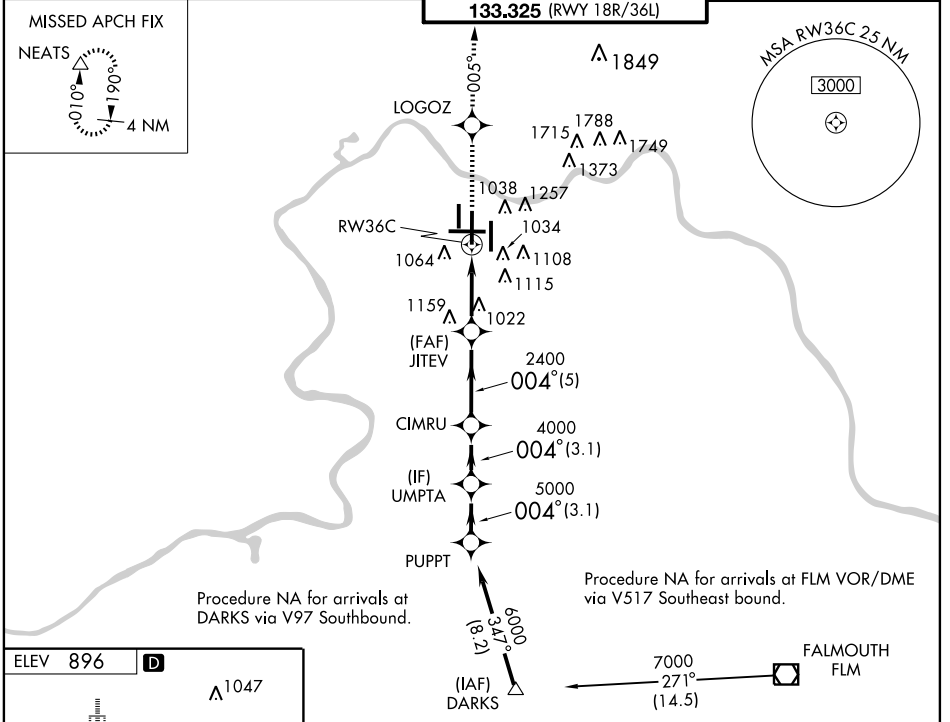
RNAV (GPS) Y RWY 36C

COVINGTON/ CINCINNATI/ NORTHERN KENTUCKY INTL (CVG)

WAAS CH 97609 W36B	APP CRS 004°	Rwy Idg 11000 TDZE 851 Apt Elev 896
----------------------------------------	------------------------	----------------------------------------------------------------

	For uncompensated Baro-VNAV systems, LNAV/VNAV NA below -16°C (4°F) or above 47°C (116°F). DME/DME RNP-0.3 NA.	ALSF-2 	MISSED APPROACH: Climb to 3000 direct LOGOZ and via 005° track to NEATS and hold.	
		MISSED APCH FIX NEATS 		

ATIS ARR 134.375 DEP 135.3	CINCINNATI APP CON 119.7 254.25 (090° - 269°) 123.875 363.15 (270° - 089°)	CINCINNATI TOWER 118.975 360.85 (RWY 18L/36R) 118.3 (RWYS 18C/36C, 09/27) 133.325 (RWY 18R/36L)	GND CON 121.7 (WEST) 121.3 (EAST)	CLNC DEL 127.175
---------------------------------------------	------------------------------------------------------------------------------------------------	-------------------------------------------------------------------------------------------------------------------------------	-------------------------------------------------------	----------------------------



3000 LOGOZ 	TRK 005° 	NEATS 	VGS1 and RNAV glidepath not coincident.	Turn NA PUPPT NA
*INAV only.		*1.5 NM to RW36C	JITEV 2400 CIMRU 4000 UMPTA 5000 PUPPT 6000	GS 3.00° TCH 52
1.5 NM	3.2 NM	5 NM	3.1 NM	3.1 NM
CATEGORY A	CATEGORY B	CATEGORY C	CATEGORY D	
LPV DA 1051/24	200 (200-1/2)			
LNAV/DA 1347/60	496 (500-1/4)			
LNAV MDA 1400/24	549 (600-1/2)	1400/50 549 (600-1)	1400/60 549 (600-1/4)	
CIRCLING 1460-1	564 (600-1)	1460-1 1/2 564 (600-1/2)	1560-2 664 (700-2)	

SE-1, 11 MAR 2010 to 08 APR 2010

SE-1, 11 MAR 2010 to 08 APR 2010

COVINGTON, KENTUCKY
Amdt 1 08325

COVINGTON/ CINCINNATI/ NORTHERN KENTUCKY INTL (CVG)
39°03'N-84°40'W

RNAV (GPS) Y RWY 36C