

RNAV (GPS) Y RWY 36L

COVINGTON/CINCINNATI/NORTHERN KENTUCKY INTL (CVG)

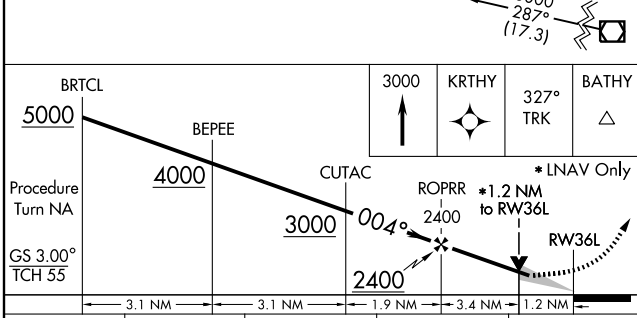
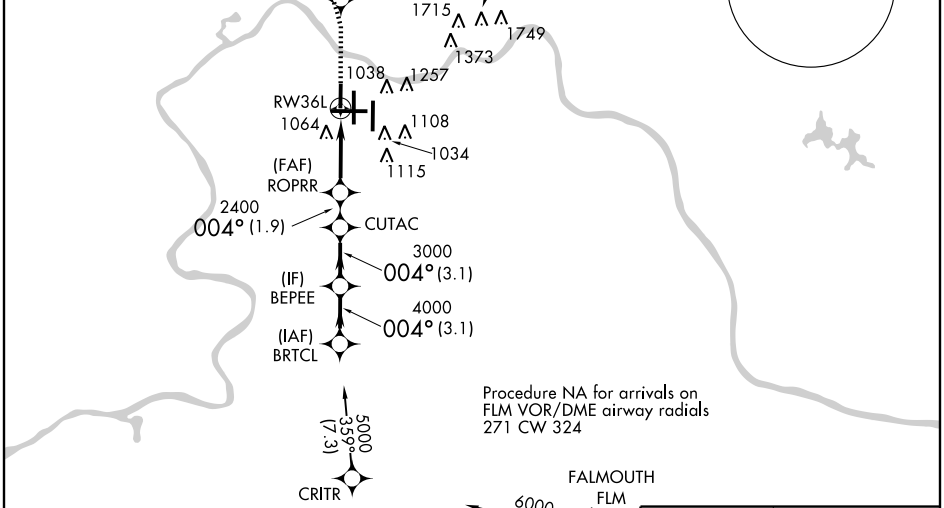
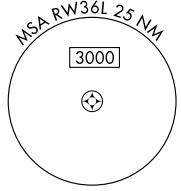
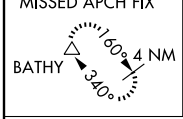
WAAS CH 49099 W36A	APP CRS 004°	Rwy Idg TDZE Apt Elev	8000 873 896
--	------------------------	-----------------------------	---

For uncompensated Baro-VNAV systems, LNAV/VNAV NA below -16°C (4°F) or above 47°C (116°F). DME/DME RNP-0.3 NA.

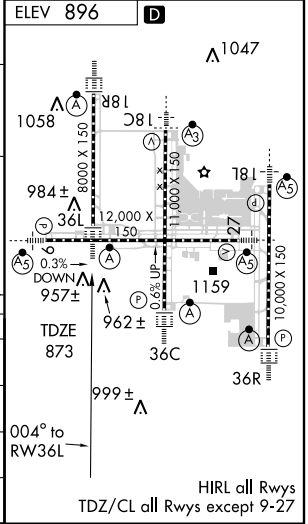
ALSF-2

MISSED APPROACH: Climb to 3000 direct KRTHY and via 327° track to BATHY and hold.

ATIS ARR 134.375 DEP 135.3	CINCINNATI APP CON 119.7 254.25 (090°-269°) 123.875 363.15 (270°-089°)	CINCINNATI TOWER 118.975 360.85 (RWY 18L/36R) 118.3 (RWYS 18C/36C, 09/27) 133.325 (RWY 18R/36L)	GND CON 121.7 (WEST) 121.3 (EAST)	CLNC DEL 127.175
--	--	---	---	----------------------------



CATEGORY	A	B	C	D
LPV DA		1073/24	200 (200-½)	
LNAV/VNAV DA		1383/60	510 (500-1¼)	
LNAV MDA	1300/24	427 (500-½)	1300/40 427 (500-¾)	1300/50 427 (500-1)
CIRCLING	1460-1	564 (600-1)	1460-1½ 564 (600-1½)	1560-2 664 (700-2)



SE-1, 19 NOV 2009 to 17 DEC 2009

SE-1, 19 NOV 2009 to 17 DEC 2009