

COVINGTON, KENTUCKY

AL-655 (FAA)

RNAV (GPS) Y RWY 36R

COVINGTON/ CINCINNATI/ NORTHERN KENTUCKY INTL (CVG)

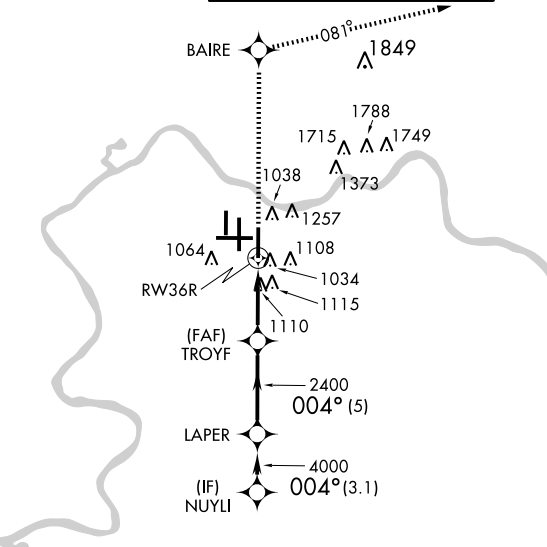
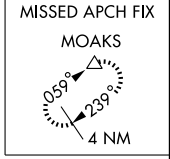
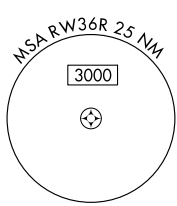
WAAS CH 42709 W36D	APP CRS 004°	Rwy Idg 10000 TDZE 896 Apt Elev 896
--	------------------------	--

For uncompensated Baro-VNAV systems, LNAV/VNAV NA below -16°C (4°F) or above 47°C (116°F). DME/DME RNP-0.3 NA.

ALSF-2

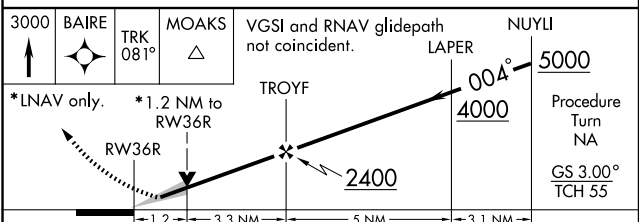
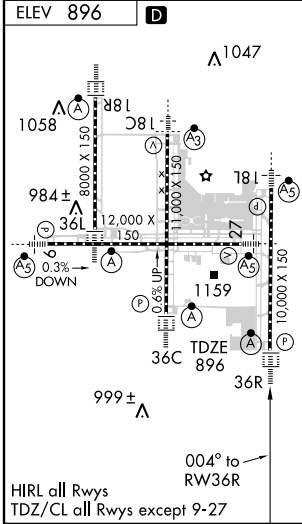
MISSED APPROACH: Climb to 3000 direct to BAIRE and via 081° track to MOAKS and hold.

ATIS ARR 134.375 DEP 135.3	CINCINNATI APP CON 119.7 254.25 (090°-269°) 123.875 363.15 (270°-089°)	CINCINNATI TOWER 118.975 360.85 (RWY 18L/36R) 118.3 (RWYS 18C/36C, 09/27) 133.325 (RWY 18R/36L)	GND CON 121.7 (WEST) 121.3 (EAST)	CLNC DEL 127.175
---	--	---	---	----------------------------



Procedure NA for arrivals at DARKS via V97 Southbound.

Procedure NA for arrivals at FLM VOR/DME via V517 Southeastbound.



CATEGORY	A	B	C	D
LPV DA	1096/24 200 (200-½)			
LNAV/VNAV DA	1340/50 444 (500-1)			
LNAV MDA	1360/24 464 (500-½)	1360/40 464 (500-¾)	1360/50 464 (500-1)	1360/50 464 (500-1)
CIRCLING	1460-1 564 (600-1)	1460-1½ 564 (600-1½)	1560-2 664 (700-2)	1560-2 664 (700-2)

COVINGTON, KENTUCKY
Amdt 1 08325

COVINGTON/ CINCINNATI/ NORTHERN KENTUCKY INTL (CVG)
39°03'N-84°40'W
RNAV (GPS) Y RWY 36R

SE-1, 19 NOV 2009 to 17 DEC 2009

SE-1, 19 NOV 2009 to 17 DEC 2009