

# RNAV (GPS) Y RWY 9

COVINGTON/CINCINNATI/NORTHERN KENTUCKY INTL (CVG)

WAAS CH <b>65709</b> <b>W09A</b>	APP CRS <b>094°</b>	Rwy Idg <b>11880</b> TDZE <b>883</b> Apt Elev <b>896</b>
--	------------------------	--

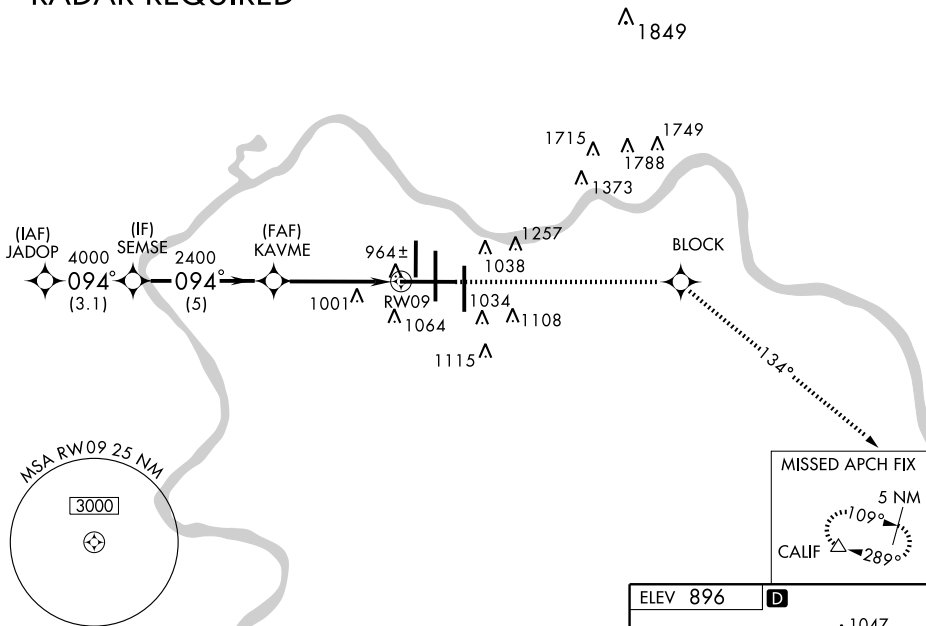
**▽** For inoperative MALSR, increase LNAV Cat. D visibility to RVR 6000. For uncompensated Baro-VNAV systems, LNAV/VNAV NA below -16° C (4° F) or above 47° C (116° F). DME/DME RNP-0.3 NA.



MISSED APPROACH: Climb to 3000 direct BLOCK and via 134° track to CALIF and hold.

ATIS ARR <b>134.375</b> DEP <b>135.3</b>	CINCINNATI APP CON <b>119.7 254.25</b> (090°- 269°) <b>123.875 363.15</b> (270°- 089°)	CINCINNATI TOWER <b>118.975 360.85</b> (RWY 18L/36R) <b>118.3</b> (RWYS 18C/36C, 09/27) <b>133.325</b> (RWY 18R/36L)	GND CON <b>121.7</b> (WEST) <b>121.3</b> (EAST)	CLNC DEL <b>127.175</b>
---	--	---	---	----------------------------

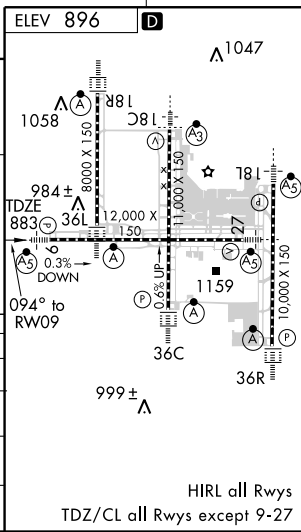
## RADAR REQUIRED



SE-1, 19 NOV 2009 to 17 DEC 2009

SE-1, 19 NOV 2009 to 17 DEC 2009

VGSi and RNAV glidepath not coincident.				3000	BLOCK	TRK 134°	CALIF
JADOP	SEMSE	KAVME	RWY 09	*LNAV Only.			
5000	4000	2400	2400	*1 NM to RWY 09			
GS 3.00° TCH 52	3.1 NM	5 NM	3.5 NM	1 NM			
CATEGORY	A	B	C	D			
LPV DA	1083/24		200 (200-½)				
LNAV/VNAV DA	1297/50		414 (500-1)				
LNAV MDA	1260/24		377 (400-½)		1260/50		
CIRCLING	1460-1	564 (600-1)	1460-1½		1560-2		
			564 (600-1½)		664 (700-2)		



# RNAV (GPS) Y RWY 9