

CINCINNATI APP CON  
123.875 363.15  
ATIS ARR  
134.375

DANVILLE TRANSITION (DNV.CEGRM1):

JOLIET TRANSITION (JOT.CEGRM1):

From over CEGRM WP via 129° track to BCATT WP, thence as depicted to ZETIP WP.

Landing South, East, West: Expect radar vectors to final approach course prior to BAMGE WP.

Landing North: Expect radar vectors to final approach course prior to ZETIP WP.

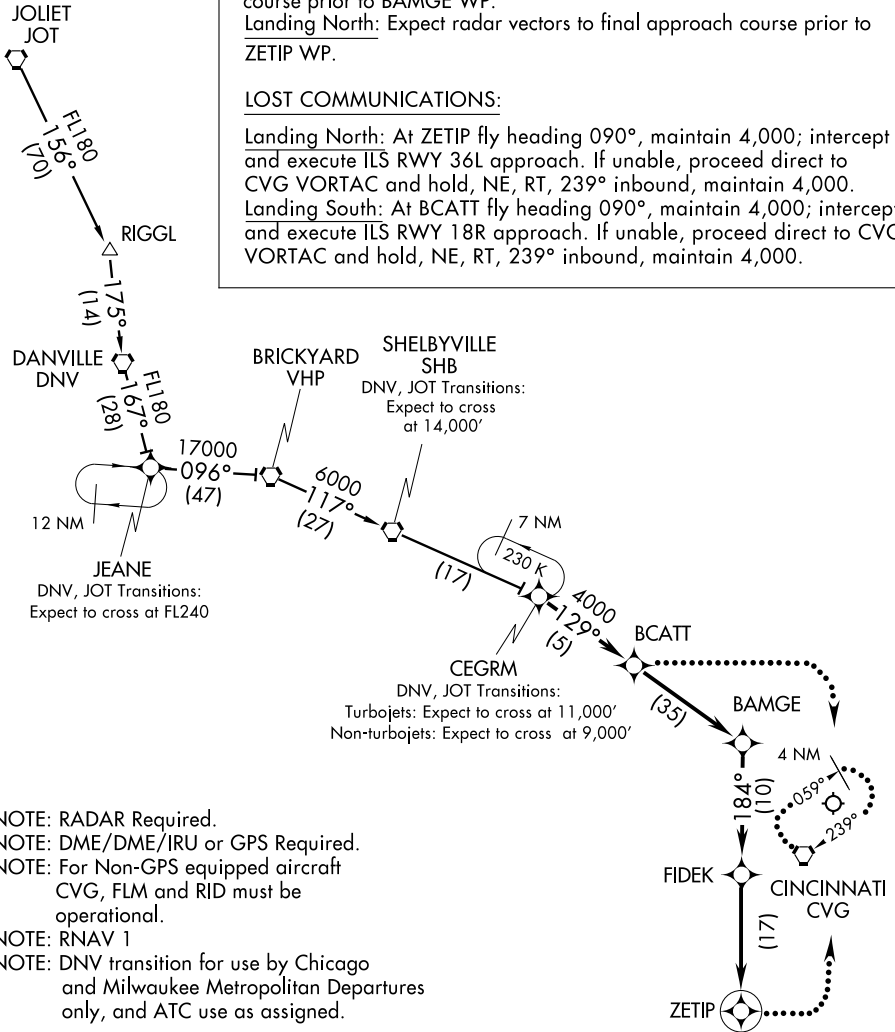
LOST COMMUNICATIONS:

Landing North: At ZETIP fly heading 090°, maintain 4,000; intercept and execute ILS RWY 36L approach. If unable, proceed direct to CVG VORTAC and hold, NE, RT, 239° inbound, maintain 4,000.

Landing South: At BCATT fly heading 090°, maintain 4,000; intercept and execute ILS RWY 18R approach. If unable, proceed direct to CVG VORTAC and hold, NE, RT, 239° inbound, maintain 4,000.

SE-1, 22 OCT 2009 to 19 NOV 2009

SE-1, 22 OCT 2009 to 19 NOV 2009



- NOTE: RADAR Required.
- NOTE: DME/DME/IRU or GPS Required.
- NOTE: For Non-GPS equipped aircraft CVG, FLM and RID must be operational.
- NOTE: RNAV 1
- NOTE: DNV transition for use by Chicago and Milwaukee Metropolitan Departures only, and ATC use as assigned.

NOTE: Chart not to scale.