

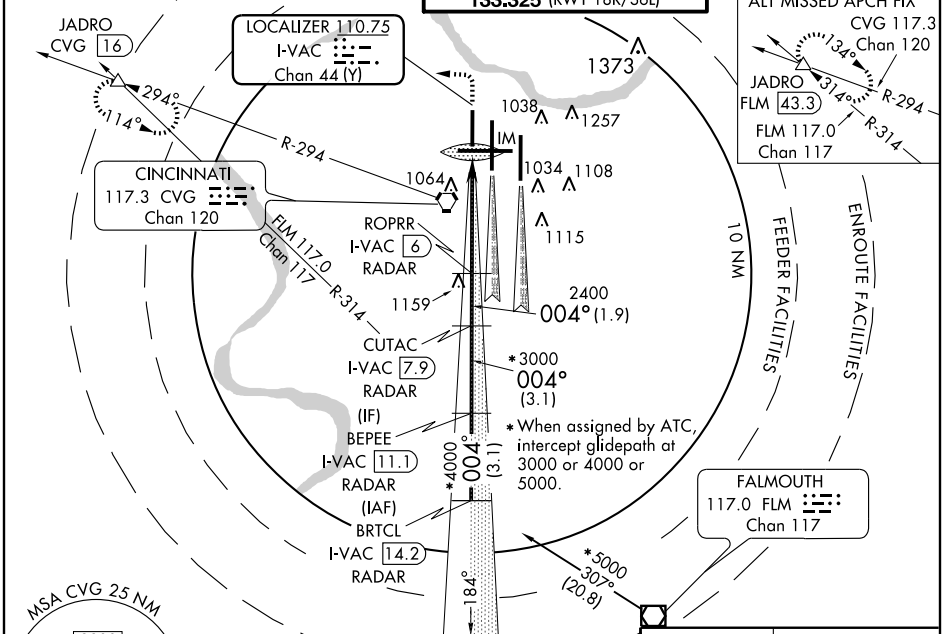
LOC/DME I-VAC 110.75 Chan 44 (Y)	APP CRS 004°	Rwy Idg 8000
		TDZE 873
		Apt Elev 896

COVINGTON/
CINCINNATI/NORTHERN KENTUCKY INTL (CVG) **ILS RWY 36L (CAT II)**

▼ Simultaneous approach authorized with Rws 36C and 36R. DME Required.

ALSF-2 MISSED APPROACH: Climb to 1300 then climbing left turn to 3000 via heading 270° and CVG R-294 to JADRO/CVG 16 DME and hold.

ATIS ARR 134.375 DEP 135.3	CINCINNATI APP CON 119.7 254.25 (090°- 269°) 123.875 363.15 (270°- 089°)	CINCINNATI TOWER 118.975 360.85 (RWY 18L/36R) 118.3 (RWYS 18C/36C, 09/27) 133.325 (RWY 18R/36L)	GND CON 121.7 (WEST) 121.3 (EAST)	CLNC DEL 127.175
---	--	---	---	----------------------------



SE-1, 11 MAR 2010 to 08 APR 2010

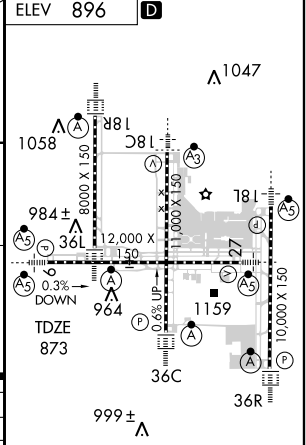
SE-1, 11 MAR 2010 to 08 APR 2010

DME or RADAR REQUIRED

BRTCL I-VAC 14.2 RADAR	* When assigned by ATC, intercept glidepath at 3000 or 4000 or 5000.	1300	3000	JADRO
BEPEE I-VAC 11.1 RADAR		↑	HDG 270° CVG R-294 117.3	△
CUTAC I-VAC 7.9 RADAR				
ROPRR I-VAC 6 RADAR				

Procedure Turn NA *5000 GS 3.00° TCH 55

3.1 NM | 3.1 NM | 1.9 NM | 4.5 NM | 851' | 1056'



CATEGORY	A	B	C	D
S-ILS-36L		RA 98/12	100	DA 973

CATEGORY II ILS - SPECIAL AIRCREW & AIRCRAFT CERTIFICATION REQUIRED

HIRL all Rws
TDZ/CL all Rws except 9-27