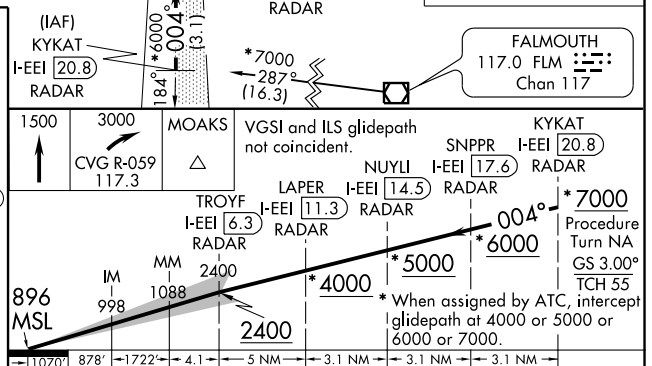
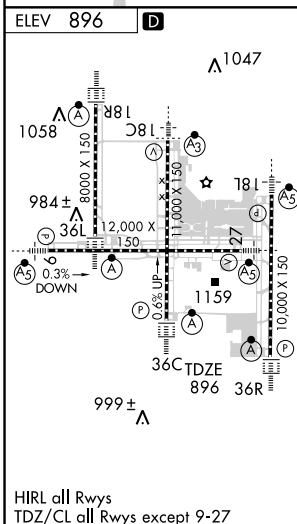
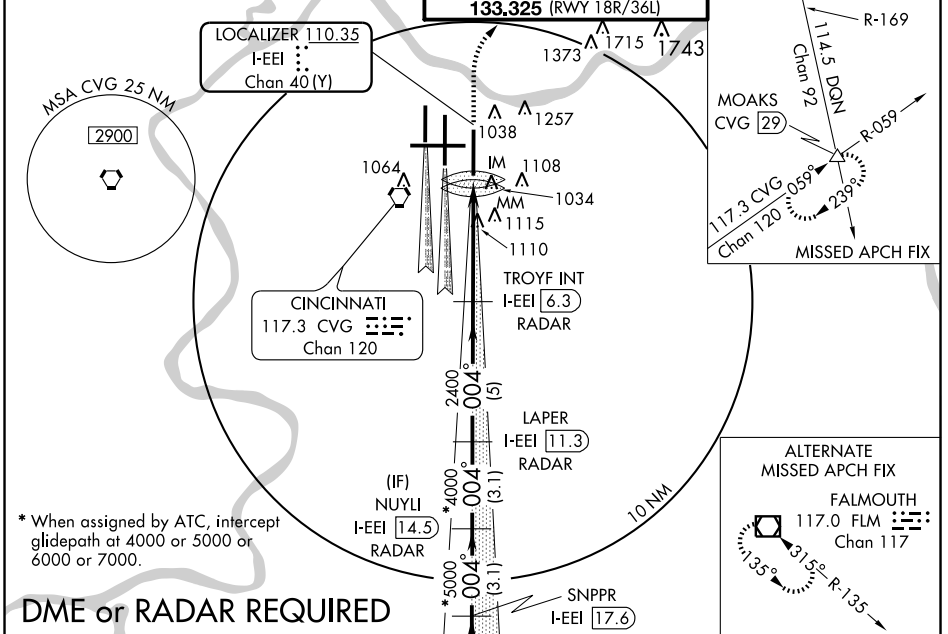


LOC/DME I-EEI <b>110.35</b> Chan 40 (Y)	APP CRS <b>004°</b>	Rwy Idg <b>10000</b> TDZE <b>896</b> Apt Elev <b>896</b>
---	------------------------	--

COVINGTON/**ILS RWY 36R (CAT III)**  
CINCINNATI/NORTHERN KENTUCKY INTL (CVG)

<p>Simultaneous approach authorized with Rwy 36C and 36L. DME or RADAR REQUIRED.</p>	<p>ALSF-2</p>	<p>MISSED APPROACH: Climb to 1500 then climbing right turn to 3000 via CVG R-059 to MOAKS Int/ CVG 29 DME and hold.</p>
<p>ATIS ARR <b>134.375</b> DEP <b>135.3</b></p>	<p>CINCINNATI APP CON <b>119.7 254.25</b> (090°- 269°) <b>123.875 363.15</b> (270°- 089°)</p>	<p>CINCINNATI TOWER <b>118.975 360.85</b> (RWY 18L/36R) <b>118.3</b> (RWYS 18C/36C, 09/27) <b>133.325</b> (RWY 18R/36L)</p>
		<p>GND CON <b>121.7</b> (WEST) <b>121.3</b> (EAST)</p>
		<p>CLNC DEL <b>127.175</b></p>



110701	878'	1722'	4.1	5 NM	3.1 NM	3.1 NM	3.1 NM
CATEGORY	A	B	C	D			
S-ILS 36R	CAT IIIa RVR 07						
S-ILS 36R	CAT IIIb RVR 06						
S-ILS 36R	CAT IIIc NA						

**CATEGORY III ILS - SPECIAL AIRCREW & AIRCRAFT CERTIFICATION REQUIRED**

SE-1, 11 MAR 2010 to 08 APR 2010

SE-1, 11 MAR 2010 to 08 APR 2010