

| | | | |
|--|------------------------|---|--------------|
| LOC/DME I-SIC 111.55 Chan 52 (Y) | APP CRS 184° | Rwy Idg TDZE 875 Apt Elev 896 | 11000 |
|--|------------------------|---|--------------|

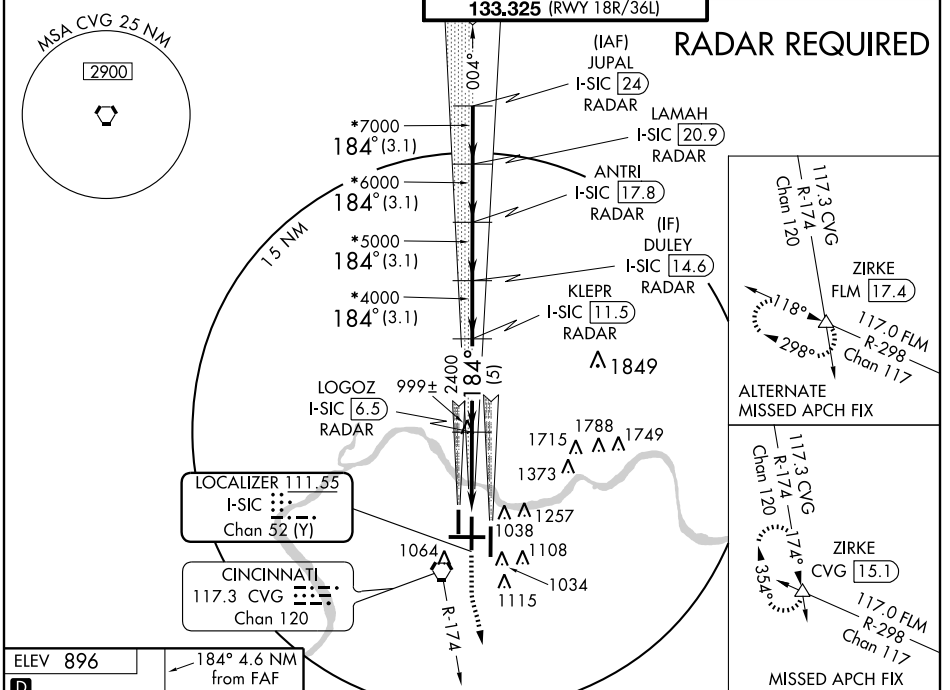
COVINGTON / **ILS or LOC RWY 18C**
CINCINNATI/NORTHERN KENTUCKY INTL (CVG)

Simultaneous approach authorized with Rwy 18L and 18R.
DME or RADAR REQUIRED. LOC procedure NA during simultaneous operations.



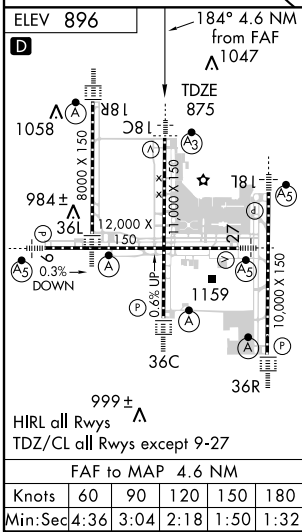
MISSED APPROACH: Climb to 1500 then climbing left turn to 3000 via CVG R-174 to ZIRKE Int/CVG 15.1 DME and hold.

| | | | | | |
|-----------------------|----------------------|--|---|---|----------------------------|
| ARR 134.375 | ATIS 135.3 | CINCINNATI APP CON 119.7 254.25 (090°- 269°) 123.875 363.15 (270°- 089°) | CINCINNATI TOWER 118.975 360.85 (RWY 18L/36R) 118.3 (RWYS 18C/36C, 09/27) 133.325 (RWY 18R/36L) | GND CON 121.7 (WEST) 121.3 (EAST) | CLNC DEL 127.175 |
|-----------------------|----------------------|--|---|---|----------------------------|



SE-1, 11 MAR 2010 to 08 APR 2010

SE-1, 11 MAR 2010 to 08 APR 2010



VGSI and ILS glidepath not coincident.

| | | | |
|--|-----------|-------|-------|
| | 1500 | 3000 | ZIRKE |
| | ↑ | △ | |
| | CVG R-174 | 117.3 | |
| | 117.3 | | |

*When assigned by ATC, intercept glidepath at 4000 or 5000 or 6000 or 7000 or 8000.

| | | | | | | |
|-----------|-----------------------|--------|----------------------------|------|--------------------|------|
| | 3.1 NM | 3.1 NM | 3.1 NM | 5 NM | 3.5 NM | 1 NM |
| CATEGORY | A | B | C | D | | |
| S-ILS 18C | 1075/18 200 (200-1/2) | | | | | |
| S-LOC 18C | 1260/24 385 (400-1/2) | | 1260/40 385 (400-3/4) | | | |
| CIRCLING | 1460-1 564 (600-1) | | 1460-1 1/2 564 (600-1 1/2) | | 1560-2 664 (700-2) | |