

|   |                        |                        |
|---|------------------------|------------------------|
| LOC/DME I-CJN<br><b>110.75</b><br>Chan 44 (Y) | APP CRS<br><b>184°</b> | Rwy Idg<br><b>8000</b> |
|   |                        | TDZE<br><b>868</b>     |
|   |                        | Apt Elev<br><b>896</b> |

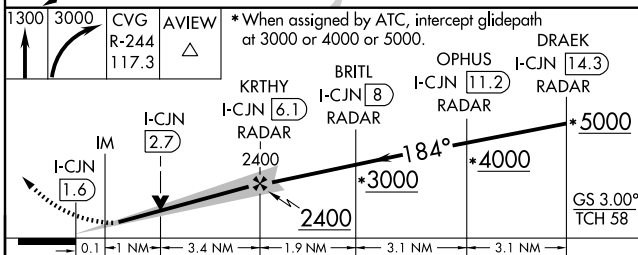
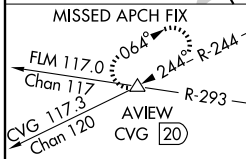
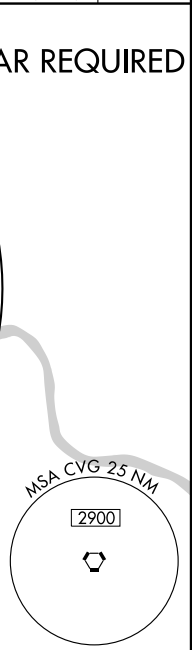
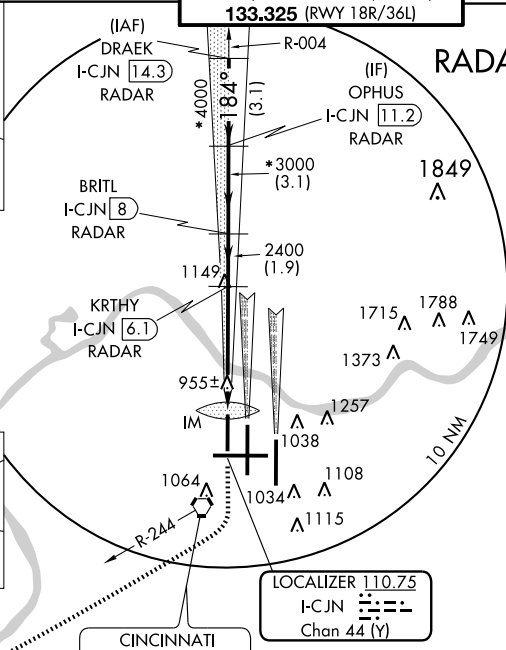
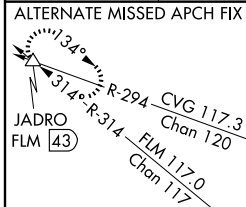
COVINGTON/**ILS or LOC RWY 18R**  
CINCINNATI/NORTHERN KENTUCKY INTL (CVG)

**⚠** Simultaneous approach authorized with Rwy 18C and 18L.  
**⚠** LOC procedure NA during simultaneous operations.  
DME or RADAR required.

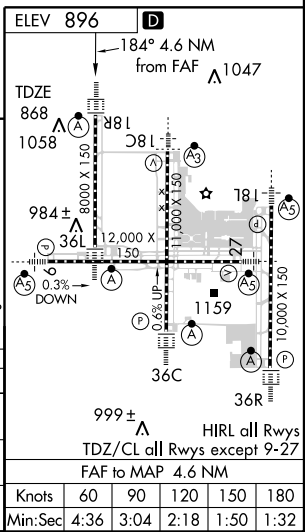


**MISSED APPROACH:** Climb to 1300 then climbing right turn to 3000 via CVG R-244 to AVIEW INT/ CVG 20 DME and hold.

|   |  |   |   |                            |
|---|--|---|---|----------------------------|
| ATIS<br>ARR <b>134.375</b> DEP <b>135.3</b> | CINCINNATI APP CON<br><b>119.7 254.25</b> (090°- 269°)<br><b>123.875 363.15</b> (270°- 089°) | CINCINNATI TOWER<br><b>118.975 360.85</b> (RWY 18L/36R)<br><b>118.3</b> (RWYS 18C/36C, 09/27)<br><b>133.325</b> (RWY 18R/36L) | GND CON<br><b>121.7</b> (WEST)<br><b>121.3</b> (EAST) | CLNC DEL<br><b>127.175</b> |
|---|--|---|---|----------------------------|



| CATEGORY  | A       | B           | C                       | D                      |
|-----------|---------|-------------|-------------------------|------------------------|
| S-ILS 18R | 1068/18 |             | 200 (200-½)             |                        |
| S-LOC 18R | 1300/24 | 432 (500-½) | 1300/40<br>432 (500-¾)  | 1300/50<br>432 (500-1) |
| CIRCLING  | 1460-1  | 564 (600-1) | 1460-1½<br>564 (600-1½) | 1560-2<br>664 (700-2)  |



SE-1, 11 MAR 2010 to 08 APR 2010

SE-1, 11 MAR 2010 to 08 APR 2010