

COVINGTON, KENTUCKY

AL-655 (FAA)

RNAV (GPS) Y RWY 18C

COVINGTON / CINCINNATI/NORTHERN KENTUCKY INTL (CVG)

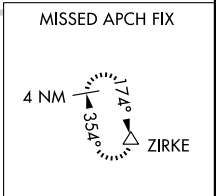
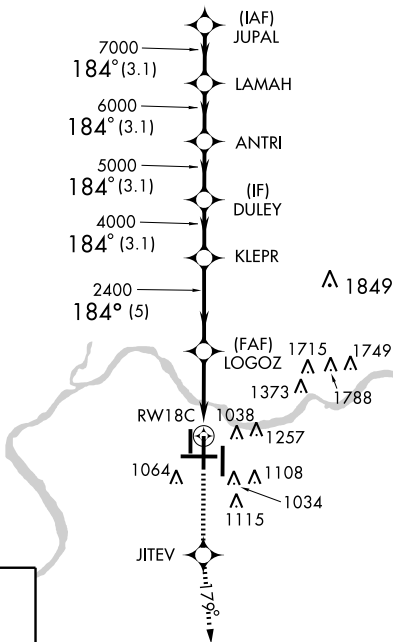
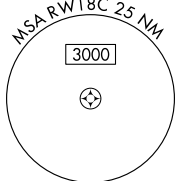
WAAS CH 86803 W 18B	APP CRS 184°	Rwy Idg 11000 TDZE 875 Apt Elev 896
---	------------------------	--

▼ For uncompensated Baro-VNAV systems, LNAV/VNAV NA below -16°C (4°F) or above 47°C (116°F).
DME/DME RNP-0.3 NA.

SSALR MISSED APPROACH: Climb to 3000 direct JITEV and via 179° track to ZIRKE and hold.

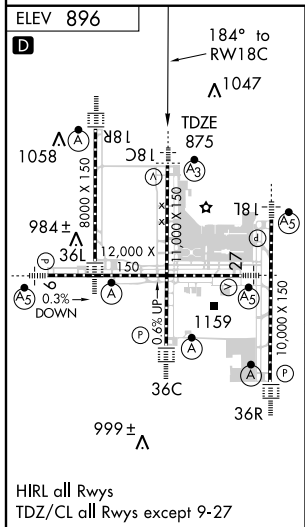
ATIS ARR 134.375 DEP 135.3	CINCINNATI APP CON 119.7 254.25 (090°- 269°) 123.875 363.15 (270°- 089°)	CINCINNATI TOWER 118.975 360.85 (RWY 18L/36R) 118.3 (RWYS 18C/36C, 09/27) 133.325 (RWY 18R/36L)	GND CON 121.7 (WEST) 121.3 (EAST)	CLNC DEL 127.175
--	--	---	---	----------------------------

RADAR REQUIRED



SE-1, 11 MAR 2010 to 08 APR 2010

SE-1, 11 MAR 2010 to 08 APR 2010



JUPAL		LAMAH		ANTRI		DULEY		KLEPR		LOGOZ		RW18C	
8000		7000		6000		5000		4000		2400		3000	
3.1 NM		3.1 NM		3.1 NM		3.1 NM		5 NM		3.2		1.4	
CATEGORY A		CATEGORY B		CATEGORY C		CATEGORY D							
LPV DA		1075/24		200 (200-1/2)									
LNAV/VNAV DA		1398/60		523 (600-1 1/4)									
LNAV MDA		1360/24		485 (500-1/2)		1360/40		485 (500-3/4)		1360/50		485 (500-1)	
CIRCLING		1460-1		564 (600-1)		1460-1 1/2		564 (600-1 1/2)		1560-2		664 (700-2)	

COVINGTON, KENTUCKY
Amdt 1 08325

COVINGTON / CINCINNATI/NORTHERN KENTUCKY INTL (CVG)
39°03'N - 84°40'W

RNAV (GPS) Y RWY 18C