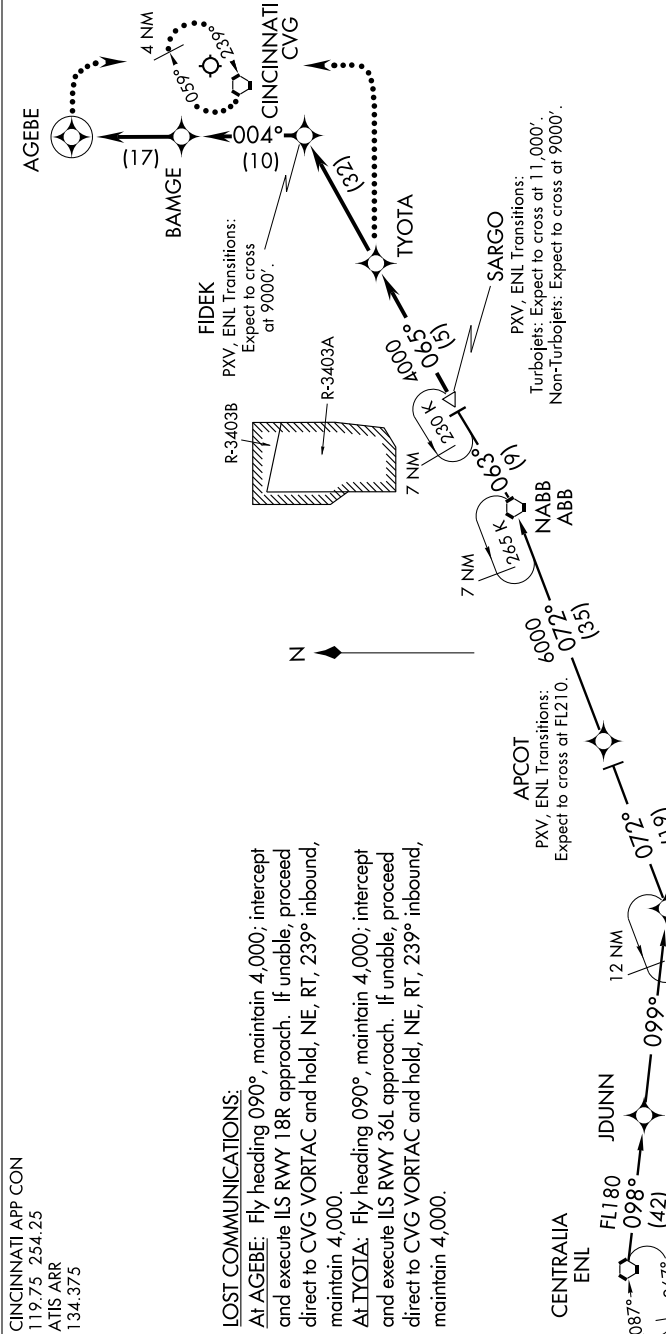


SE-1, 11 MAR 2010 to 08 APR 2010

CINCINNATI APP CON
 119.75 254.25
 ATIS ARR
 134.375

LOST COMMUNICATIONS:

At AGEBE: Fly heading 090°, maintain 4,000; intercept and execute ILS RWY 18R approach. If unable, proceed direct to CVG VORTAC and hold, NE, RT, 239° inbound, maintain 4,000.
At TYOTA: Fly heading 090°, maintain 4,000; intercept and execute ILS RWY 36L approach. If unable, proceed direct to CVG VORTAC and hold, NE, RT, 239° inbound, maintain 4,000.



CENTRALIA TRANSITION (ENL.SARGO1):
POCKET CITY TRANSITION (PXV.SARGO1):

From SARGO WP via 065° track to TYOTA WP, thence as depicted to AGEBE WP.
 Landing South: Expect radar vectors to final approach course prior to AGEBE WP.
 Landing East, West, North: Expect radar vectors to final approach course prior to FIDEK WP.

NOTE: RADAR Required.
 NOTE: DME/DME/IRU or GPS Required.
 NOTE: RNAV 1
 NOTE: CENTRALIA TRANSITION: For Non-GPS equipped aircraft ILLU, ABB, and FLW must be operational.

POCKET CITY
 PXV

NOTE: Chart not to scale.

SE-1, 11 MAR 2010 to 08 APR 2010