

# NDB RWY 25

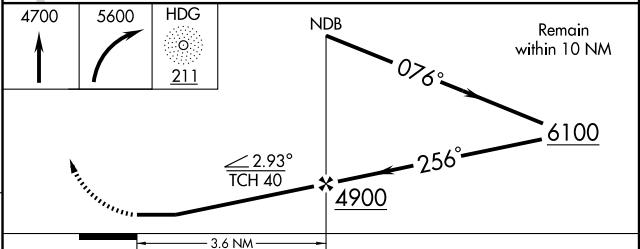
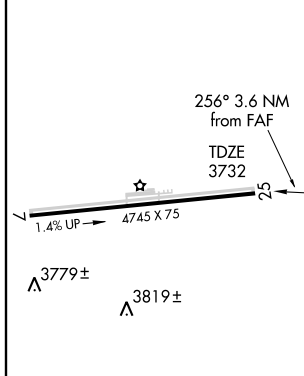
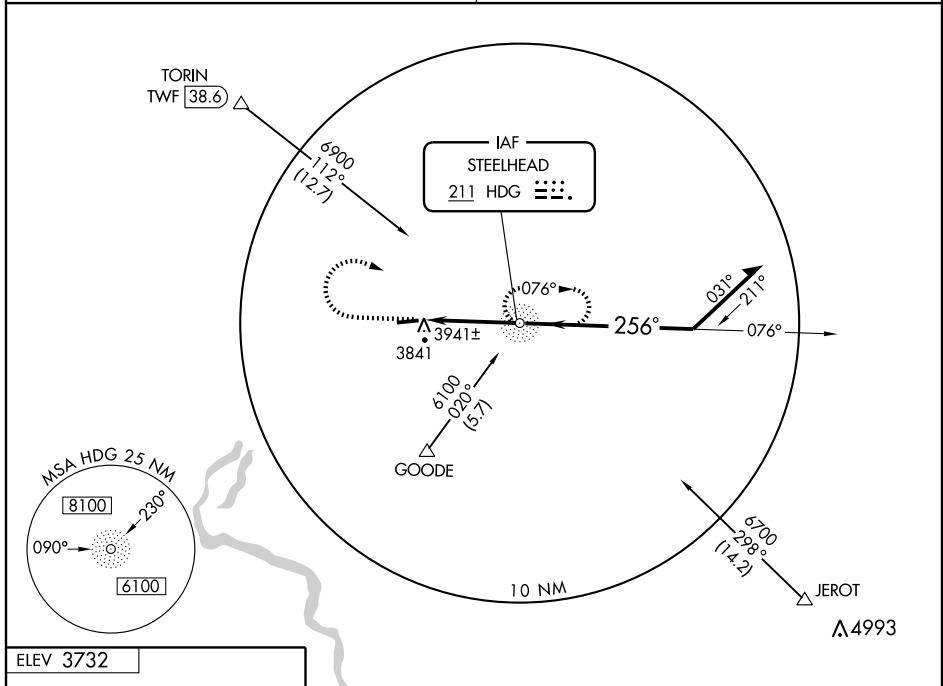
GOODING MUNI (GNG)

NDB HDG <b>211</b>	APP CRS <b>256°</b>	Rwy Idg <b>4745</b>
		TDZE <b>3732</b>
		Apt Elev <b>3732</b>

V NA Visibility reduction by helicopters NA. Obtain local altimeter setting on CTAF; when not received use Jerome County altimeter setting.

MISSED APPROACH: Climb to 4700 then climbing right turn to 5600 direct HDG NDB and hold.

SALT LAKE CENTER <b>118.05 363.0</b>	UNICOM <b>122.8 (CTAF) 0*</b>
---	----------------------------------



CATEGORY	A		B		C		D	
	S-25	4260-1	528 (600-1)	4260-1½	528 (600-1½)	4260-1¾	528 (600-1¾)	4260-2
CIRCLING	4260-1	528 (600-1)	4260-1½	528 (600-1½)	4300-2	568 (600-2)		
JEROME COUNTY ALTIMETER SETTING MINIMUMS								
S-25	4340-1	608 (700-1)	4340-1¾	608 (700-1¾)	4340-2	608 (700-2)		
CIRCLING	4340-1	608 (700-1)	4340-1¾	608 (700-1¾)	4340-2	608 (700-2)		

MIRA Rwy 7-25 (3779±)

FAF to MAP 3.6 NM

Knots	60	90	120	150	180
Min:Sec	3:36	2:24	1:48	1:26	1:12

NW-1, 11 MAR 2010 to 08 APR 2010

NW-1, 11 MAR 2010 to 08 APR 2010