

ILS or LOC/DME RWY 1L

LAS VEGAS/McCARRAN INTL (LAS)

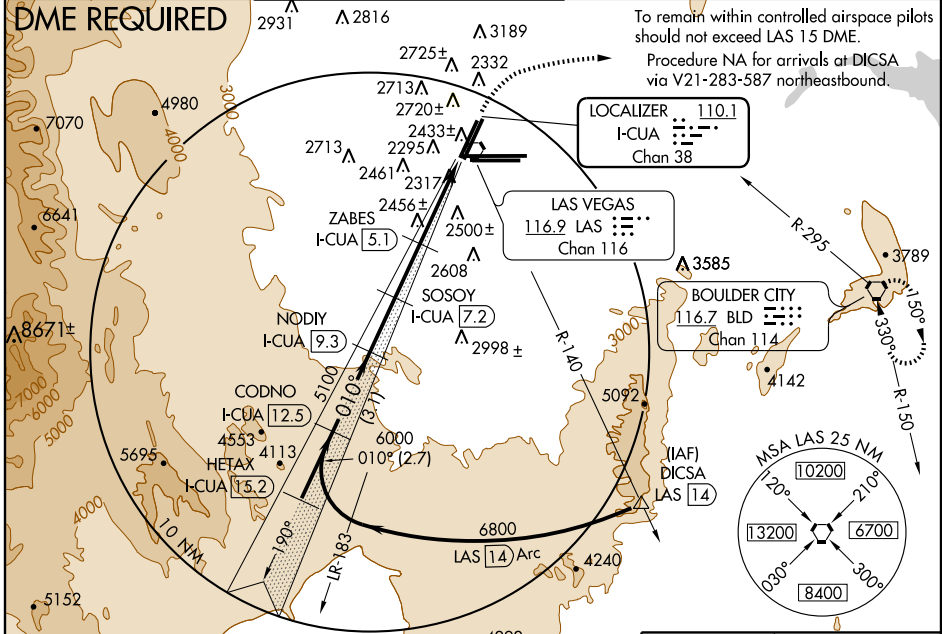
LOC/DME I-CUA 110.1 Chan 38	APP CRS 010°	Rwy Idg 1L 8401 TDZE 2176 Apt Elev 2181
--	------------------------	--

⚠ Inoperative table does not apply to S-LOC 1L Cat C.

MALSF
⚠

MISSED APPROACH: Climb to 3200, then climbing right turn to 6000 via 070° heading and BLD R-295 to BLD VORTAC and hold.

ATIS 132.4	LAS VEGAS APP CON 125.025 379.15	LAS VEGAS TOWER 118.75 257.8 (Rwy 1L/19R, 1R/19L) 119.9 257.8 (Rwy 7L/25R, 7R/25L)	GND CON 121.1 270.8 E of 1R/19L 121.9 254.3 W of 1R/19L	CLNC DEL 118.0 379.95
----------------------	--	--	---	---------------------------------



SW-4, 19 NOV 2009 to 17 DEC 2009

SW-4, 19 NOV 2009 to 17 DEC 2009

ELEV 2181	D
-----------	----------

Use I-CUA DME when on the localizer course.

HETAX I-CUA [15.2] VGS1 and ILS glidepath not coincident.

Procedure Turn NA

GS 3.40° TCH 58

ILS unusable within 0.2 NM from threshold.

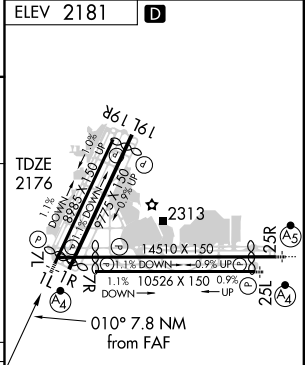
3200	6000	BLD R-295	BLD
↑	↷ 070°	116.7	116.7

Procedure Turn NA

6800 → 010° → 6000

5100 → *LOC only → 4300 → *3600

2.7 NM 3.1 NM 2.1 NM 2.1 NM 2.1 NM 1.3 0.2



CATEGORY	A	B	C	D
S-ILS 1L	2460-1 284 (300-1)			NA
S-LOC 1L	2720-1	544 (600-1)	2720-1½ 544 (600-1½)	NA
CIRCLING	3020-1 839 (900-1)	3020-1¼ 839 (900-1¼)	3020-2½ 839 (900-2½)	NA

REIL Rwys 1L, 1R, 7R, 19L and 19R
MIRL Rwy 1R-19L
HIRL Rwys 1L-19R, 7L-25R and 7R-25L