

RNAV (GPS) RWY 19L

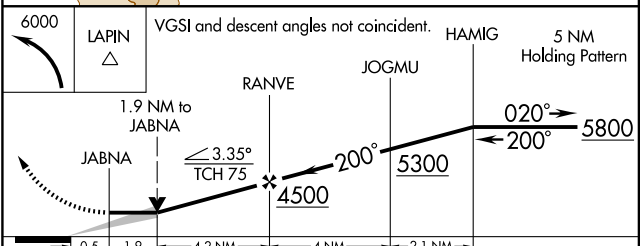
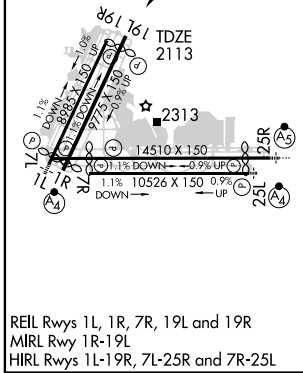
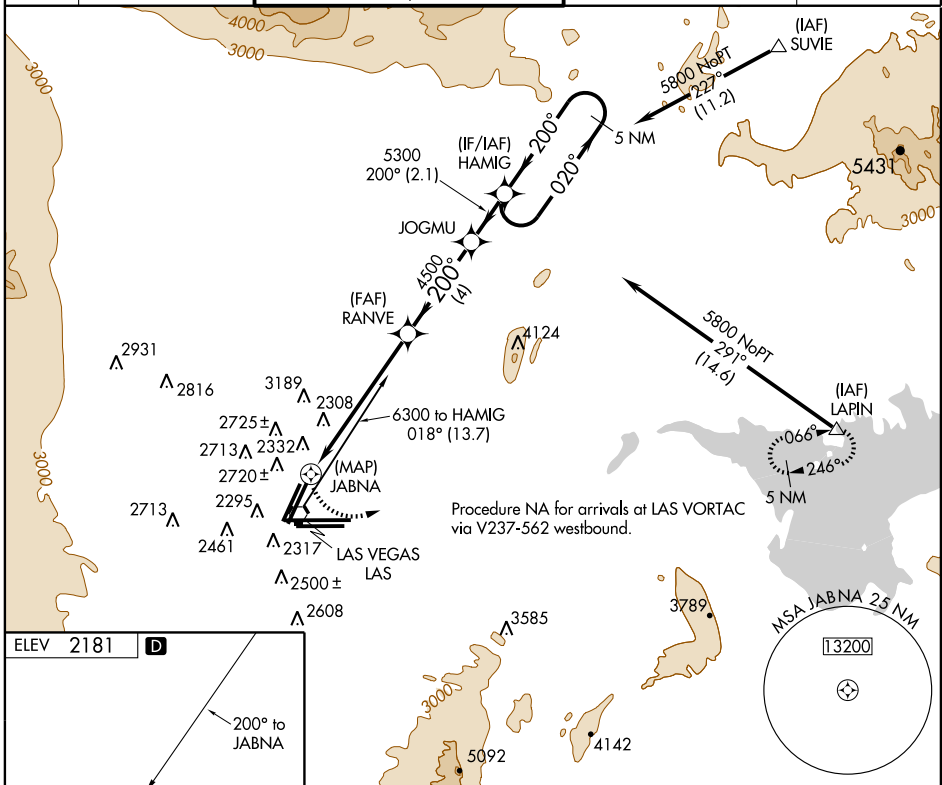
LAS VEGAS/McCARRAN INTL (LAS)

APP CRS	Rwy Idg	8745
200°	TDZE	2113
	Apt Elev	2181

⚠ If local altimeter setting not received, use North Las Vegas altimeter setting and increase all MDAs 40 feet.
 DME/DME RNP- 0.3 NA.
 VDP NA when using North Las Vegas altimeter setting.

⚠ MISSED APPROACH: Climbing left turn to 6000 direct LAPIN and hold.

ATIS	LAS VEGAS APP CON	LAS VEGAS TOWER	GND CON	CLNC DEL
132.4	125.025 379.15	118.75 257.8 (Rwy 1L/19R, 1R/19L) 119.9 257.8 (Rwy 7L/25R, 7R/25L)	121.1 270.8 E of 1R/19L 121.9 254.3 W of 1R/19L	118.0 379.95



CATEGORY	A	B	C	D
LNNAV MDA	2920-1 807 (800-1)	2920-1¼ 807 (800-1¼)	2920-2¼ 807 (800-2¼)	2920-2½ 807 (800-2½)
CIRCLING	3020-1 839 (900-1)	3020-1¼ 839 (900-1¼)	3080-2¾ 899 (900-2¾)	3080-3 899 (900-3)

SW-4, 19 NOV 2009 to 17 DEC 2009

SW-4, 19 NOV 2009 to 17 DEC 2009