

# RNAV (GPS) RWY 19R

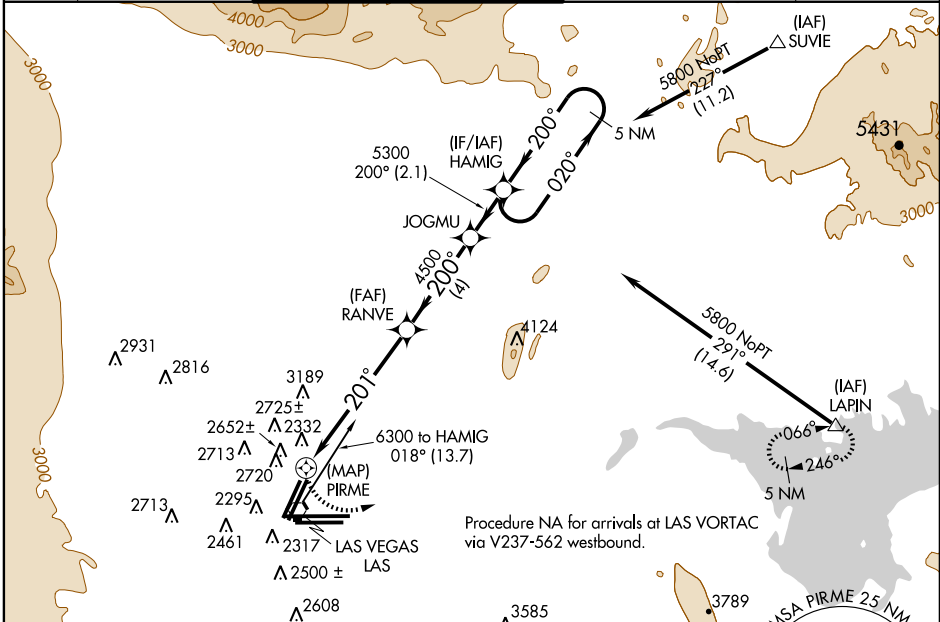
LAS VEGAS/McCARRAN INTL (LAS)

APP CRS	Rwy Idg	<b>8397</b>
<b>201°</b>	TDZE	<b>2117</b>
	Apt Elev	<b>2181</b>

**⚠** If local altimeter setting not received, use North Las Vegas altimeter setting and increase all MDAs 40 feet.  
 DME/DME RNP-0.3 NA.  
 Visibility reduction by helicopters NA.

**⚠** MISSED APPROACH: Climbing left turn to 6000 direct LAPIN and hold.

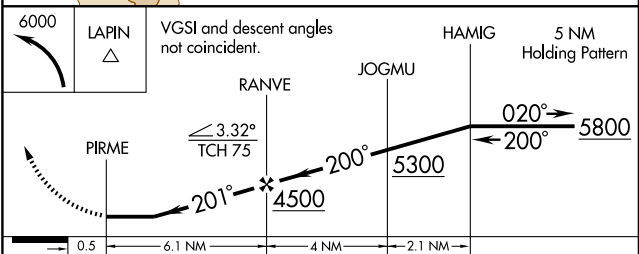
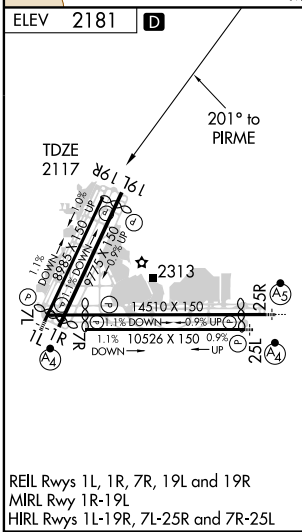
ATIS	LAS VEGAS APP CON	LAS VEGAS TOWER	GND CON	CLNC DEL
<b>132.4</b>	<b>125.025 379.15</b>	<b>118.75 257.8</b> (Rwy 1L/19R, 1R/19L) <b>119.9 257.8</b> (Rwy 7L/25R, 7R/25L)	<b>121.1 270.8</b> E of 1R/19L <b>121.9 254.3</b> W of 1R/19L	<b>118.0 379.95</b>



Procedure NA for arrivals at LAS VORTAC via V237-562 westbound.

SW-4, 19 NOV 2009 to 17 DEC 2009

SW-4, 19 NOV 2009 to 17 DEC 2009



	0.5	6.1 NM	4 NM	2.1 NM
CATEGORY	A	B	C	D
RNAV MDA	2980-1 863 (800-1)	2980-1½ 863 (800-1¼)	2980-2½ 863 (800-2½)	2980-2¾ 863 (800-2¾)
CIRCLING	3020-1 839 (900-1)	3020-1¼ 839 (900-1¼)	3080-2¾ 899 (900-2¾)	3080-3 899 (900-3)