

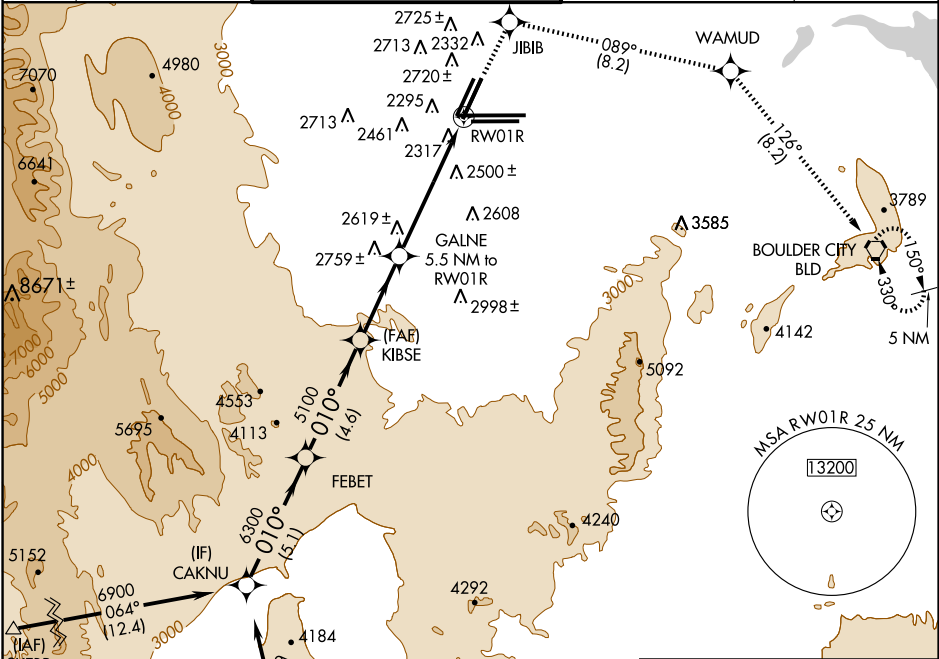
RNAV (GPS) RWY 1R

LAS VEGAS/MC CARRAN INTL (LAS)

WAAS CH 42800 W01A	APP CRS 010°	Rwy Idg TDZE Apt Elev	8681 2170 2181
--	------------------------	-----------------------------	---

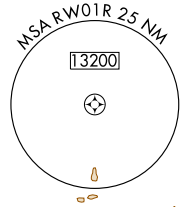
▽ ▲ DME/DME RNP-0.3 NA.	MISSED APPROACH: Climb to 6000 direct JIBIB and via 089° track to WAMUD and via 126° track to BLD VORTAC and hold.
--	--

ATIS 132.4	LAS VEGAS APP CON 125.025 379.15	LAS VEGAS TOWER 118.75 257.8 (Rwy 1L/19R, 1R/19L) 119.9 257.8 (Rwy 7L/25R, 7R/25L)	GND CON 121.1 270.8 E of 1R/19L 121.9 254.3 W of 1R/19L	CLNC DEL 118.0 379.95
----------------------	--	--	---	---------------------------------

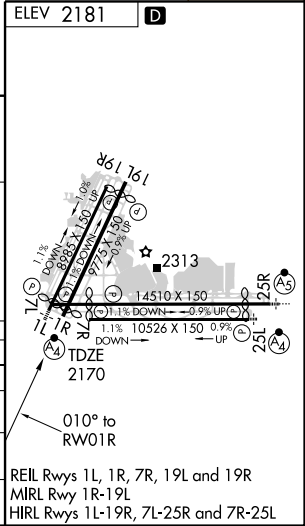


SW-4, 11 MAR 2010 to 08 APR 2010

SW-4, 11 MAR 2010 to 08 APR 2010



VGSI and RNAV glidepath not coincident				
CAKNU	FEBET	KIBSE	GALNE 5.5 NM to RW01R	RW01R
Procedure Turn NA				
GS 3.00°				
TCH 50				
CATEGORY	A	B	C	D
LPV DA	2693-1¼ 523 (600-1¼)			
LNAV/VNAV DA	NA			
LNAV MDA	2920-1 750 (800-1)	2920-1¼ 750 (800-1¼)	2920-2¼ 750 (800-2¼)	2920-2½ 750 (800-2½)
CIRCLING	3020-1¼ 839 (900-1¼)		3020-2½ 839 (900-2½)	3020-2¾ 839 (900-2¾)



REIL Rws 1L, 1R, 7R, 19L and 19R
MRL Rwy 1R-19L
HIRL Rws 1L-19R, 7L-25R and 7R-25L