

LAS VEGAS, NEVADA

AL-662 (FAA)

VORTAC LAS 116.9 Chan 116	APP CRS 262°	Rwy 25L Idg TDZE Apt Elev	10526 2069 2181	Rwy 25R Idg TDZE Apt Elev	12755 2067 2181
--	------------------------	---------------------------------	--	---------------------------------	--

VOR RWY 25L/R

LAS VEGAS/McCARRAN INTL (LAS)

⚠ Inoperative table does not apply to MALS Rwy 25R.
 Inoperative table does not apply to MALS Rwy 25L
 Cat. C.

MALS Rwy 25L

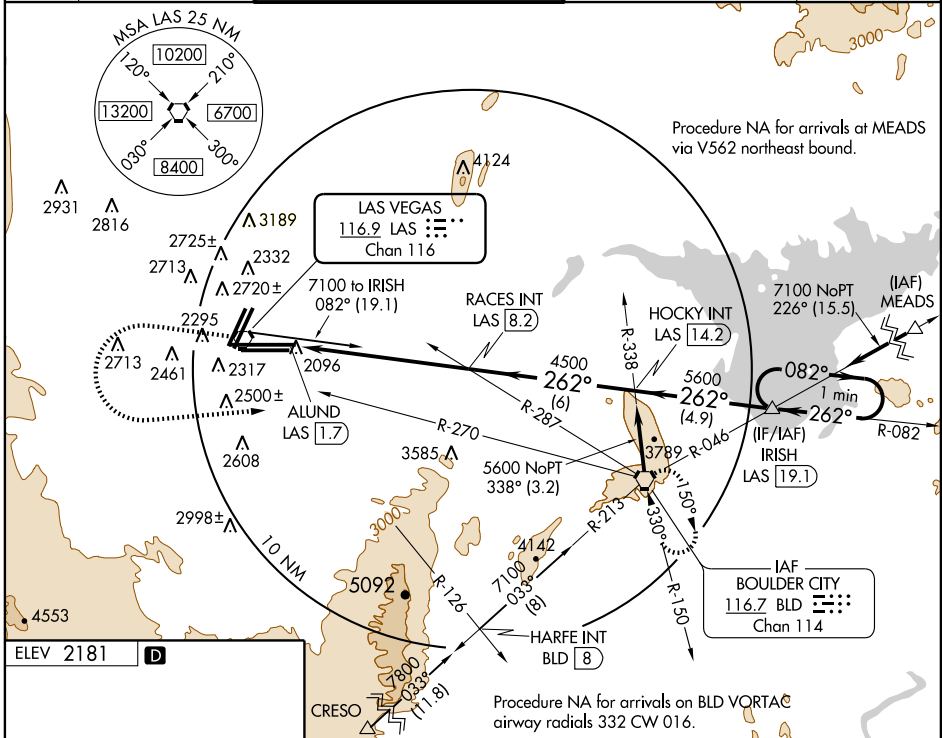
MALS Rwy 25R

MISSED APPROACH: Climb to 4000 then climbing left turn to 6000 via heading 070° and BLD R-270 to BLD VORTAC and hold.

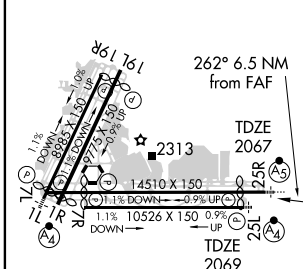
ATIS 132.4	LAS VEGAS APP CON 125.025 379.15	LAS VEGAS TOWER 118.75 257.8 (Rwy 1L/19R, 1R/19L) 119.9 257.8 (Rwy 7L/25R, 7R/25L)	GND CON 121.9 270.8 E of 1R/19L 121.9 254.3 W of 1R/19L	CLNC DEL 118.0 379.95
----------------------	--	--	---	---------------------------------

SW-4, 19 NOV 2009 to 17 DEC 2009

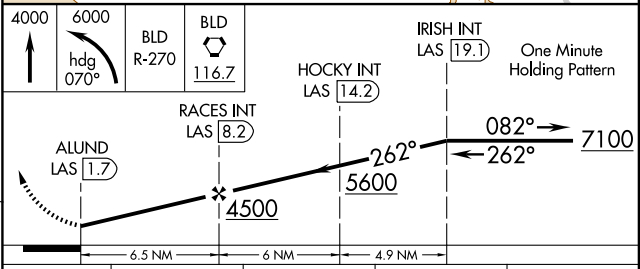
SW-4, 19 NOV 2009 to 17 DEC 2009



ELEV 2181	D
-----------	----------



REIL Rws 1L, 1R, 7R, 19L and 19R					
MIRL Rwy 1R-19L					
HIRL Rws 1L-19R, 7L-25R and 7R-25L					
FAF to MAP 6.5 NM					
Knots	60	90	120	150	180
Min:Sec	6:30	4:20	3:15	2:36	2:10



CATEGORY	A	B	C	D
S-25R	2720-1	653 (600-1)	2720-1 $\frac{3}{4}$ 653 (600-1 $\frac{3}{4}$)	2720-2 653 (600-2)
S-25L	2720- $\frac{3}{4}$	651 (600- $\frac{3}{4}$)	2720-1 $\frac{3}{4}$ 651 (600-1 $\frac{3}{4}$)	2720-2 651 (600-2)
CIRCLING	3020-1 839 (900-1)	3020-1 $\frac{1}{4}$ 839 (900-1 $\frac{1}{4}$)	3020-2 $\frac{1}{2}$ 839 (900-2 $\frac{1}{2}$)	3040-2 $\frac{3}{4}$ 859 (900-2 $\frac{3}{4}$)

LAS VEGAS, NEVADA
Amdt 3 09239

36°05'N - 115°09'W

LAS VEGAS/McCARRAN INTL (LAS) VOR RWY 25L/R