

CLARR TWO ARRIVAL

LAS VEGAS APP CON
 125.025 282.2
 LAS VEGAS TOWER
 118.75 257.8 (Rwy 1L/19R, 1R/19L)
 119.9 257.8 (Rwy 7L/25R, 7R/25L)
 NORTH LAS VEGAS TOWER*
 125.7 360.75
 LAS VEGAS ATIS
 132.4
 NORTH LAS VEGAS ATIS
 118.05

LOCALIZER 110.3
 I-LAS
 Chan 40

LAS VEGAS
 116.9 LAS
 Chan 116

NORTH LAS VEGAS

LOCALIZER 111.75
 I-RLE
 Chan 40

RWY 25R
 255°
 RWY 25L
 255°

(ISSAR)
 N36° 02.66'
 W115° 34.53'

IPUMY
 N36°01.86'
 W115°22.52'

McCARRAN INTL

HENDERSON EXECUTIVE

BOULDER CITY
 116.7 BLD
 Chan 114
 N35°59.75'-W114°51.82'

R-260

BOULDER CITY MUNI

BEATTY
 114.7 BTY
 Chan 94

SKEBR
 N35°45.43'
 W115°34.53'

CLARR
 N35°06.73'
 W115°46.19'
 13000 250K

MISEN
 N35°06.14'
 W116°24.23'
 FL240

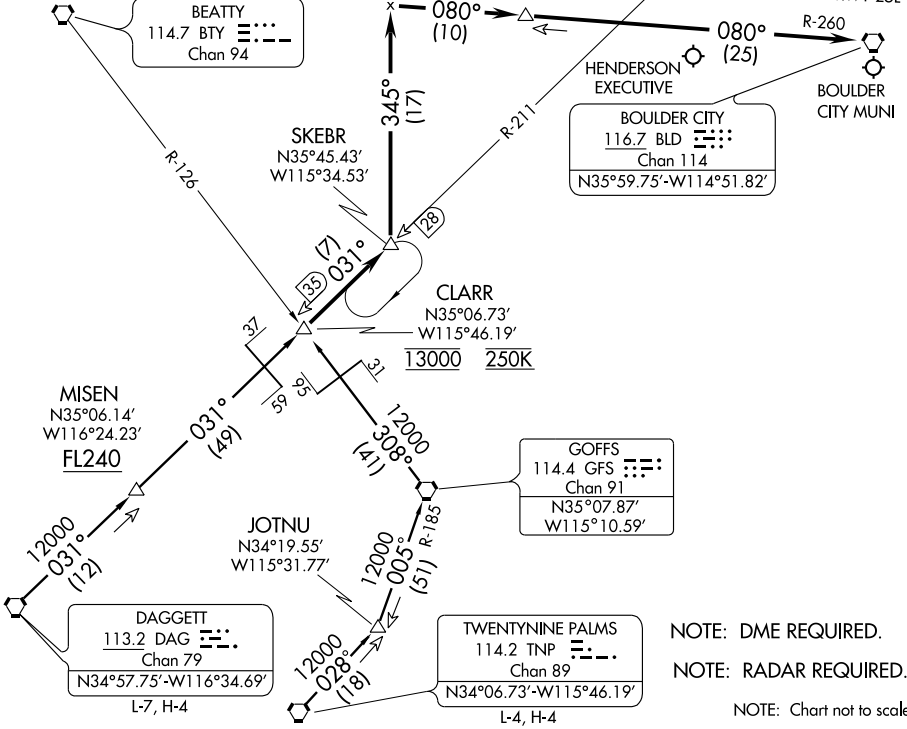
GOFFS
 114.4 GFS
 Chan 91
 N35°07.87'
 W115°10.59'

JOTNU
 N34°19.55'
 W115°31.77'

DAGGETT
 113.2 DAG
 Chan 79
 N34°57.75'-W116°34.69'
 L-7, H-4

TWENTYNINE PALMS
 114.2 TNP
 Chan 89
 N34°06.73'-W115°46.19'
 L-4, H-4

NOTE: DME REQUIRED.
 NOTE: RADAR REQUIRED.
 NOTE: Chart not to scale.



DAGGETT TRANSITION (DAG.CLARR2): From over DAG VORTAC via DAG R-031 and LAS R-211 to CLARR INT. Thence. . .

TWENTYNINE PALMS TRANSITION (TNP.CLARR2): From over TNP VORTAC via TNP R-028 to JOTNU INT, then via GFS R-185 to GFS VORTAC, then via GFS R-308 and BTY R-126 to CLARR INT. Thence. . .

...From over CLARR INT via LAS R-211 to SKEBR INT. Thence. . .

LANDING McCARRAN INTL: Via heading 345° to intercept the BLD R-260 to BLD VORTAC. Rws 1L/R, 7L/R, and 19L/R expect radar vectors for visual approach prior to BLD VORTAC. Rws 25L/R expect ILS approach procedure.

LANDING NORTH LAS VEGAS, HENDERSON EXECUTIVE, and BOULDER CITY MUNI: After SKEBR INT expect radar vectors to airport.

CLARR TWO ARRIVAL

SW-4, 19 NOV 2009 to 17 DEC 2009

SW-4, 19 NOV 2009 to 17 DEC 2009