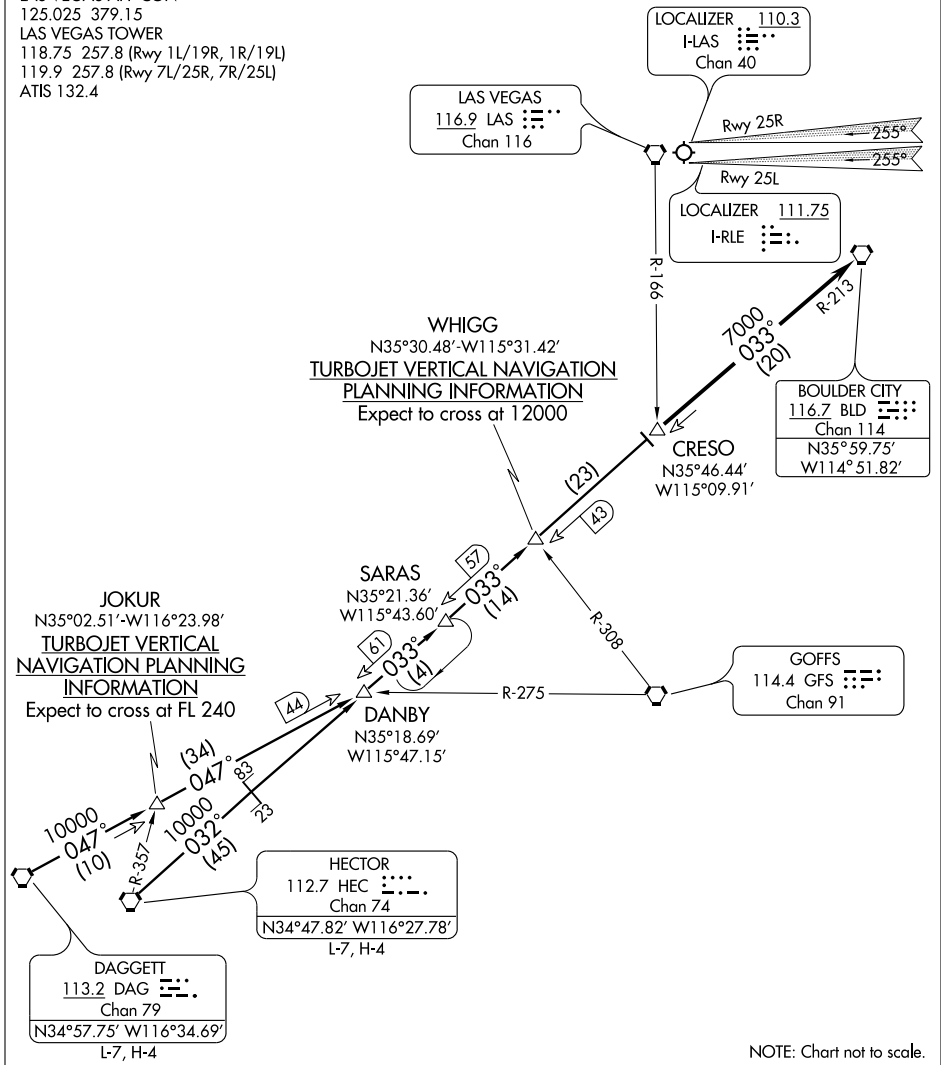


CRESO THREE ARRIVAL

LAS VEGAS APP CON
125.025 379.15
LAS VEGAS TOWER
118.75 257.8 (Rwy 1L/19R, 1R/19L)
119.9 257.8 (Rwy 7L/25R, 7R/25L)
ATIS 132.4



SW-4, 11 MAR 2010 to 08 APR 2010

SW-4, 11 MAR 2010 to 08 APR 2010

NOTE: Chart not to scale.

DAGGETT TRANSITION (DAG.CRESO3): From over DAG VORTAC via DAG R-047 and BLD R-213 to CRESO INT/DME, thence....

HECTOR TRANSITION (HEC.CRESO3): From over HEC VORTAC via HEC R-032 and BLD R-213 to CRESO INT/DME, Thence....

....From over CRESO INT/DME via BLD R-213 to BLD VORTAC. Runways 1, 7 and 19 expect vectors to final approach course. From BLD VORTAC, expect ILS approach Runway 25L.

CRESO THREE ARRIVAL