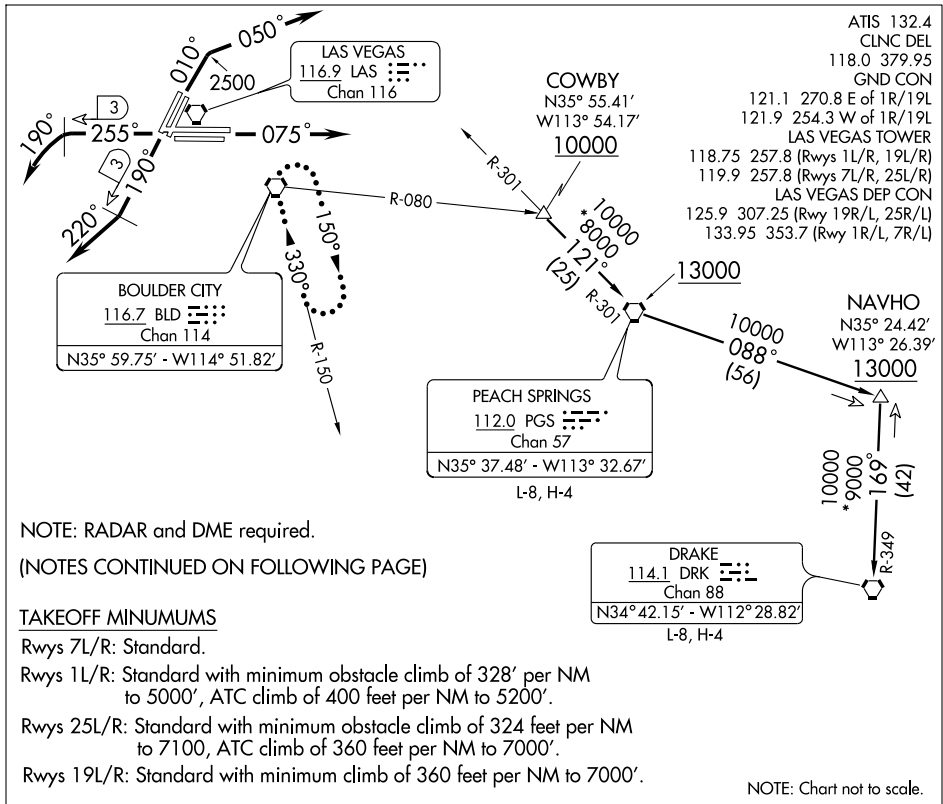


# HOOVER THREE DEPARTURE



ATIS 132.4  
 CLNC DEL  
 118.0 379.95  
 GND CON  
 121.1 270.8 E of 1R/19L  
 121.9 254.3 W of 1R/19L  
 LAS VEGAS TOWER  
 118.75 257.8 (Rwys 1L/R, 19L/R)  
 119.9 257.8 (Rwys 7L/R, 25L/R)  
 LAS VEGAS DEP CON  
 125.9 307.25 (Rwy 19R/L, 25R/L)  
 133.95 353.7 (Rwy 1R/L, 7R/L)

NOTE: RADAR and DME required.  
(NOTES CONTINUED ON FOLLOWING PAGE)

### TAKEOFF MINIMUMS

- Rwys 7L/R: Standard.
- Rwys 1L/R: Standard with minimum obstacle climb of 328' per NM to 5000', ATC climb of 400 feet per NM to 5200'.
- Rwys 25L/R: Standard with minimum obstacle climb of 324 feet per NM to 7100, ATC climb of 360 feet per NM to 7000'.
- Rwys 19L/R: Standard with minimum climb of 360 feet per NM to 7000'.

NOTE: Chart not to scale.

### DEPARTURE ROUTE DESCRIPTION

- TAKE-OFF RUNWAYS 1L/R: Climb via heading 010° to 2500, then climbing right turn via heading 050°, thence ....
- TAKE-OFF RUNWAYS 7L/R: Climb via heading 075°, thence ....
- TAKE-OFF RUNWAYS 19L/R: Climb via heading 190° until LAS VORTAC 3 DME, then right turn via heading 220°, thence ....
- TAKE-OFF RUNWAYS 25L/R: Climb via heading 255° until LAS VORTAC 3 DME, then left turn via heading 190°, thence ....
- .... via radar vector to transition or assigned route, maintain 7000, expect clearance to filed altitude two minutes after departure.

LOST COMMUNICATIONS: If no contact with ATC upon reaching 7000', proceed direct BLD VORTAC then climb in BLD VORTAC holding pattern to appropriate MEA for route of flight.

DRAKE TRANSITION (HOOVR3.DRK): From over COWBY INT via PGS R-301 to PGS VORTAC then PGS R-088 and DRK R-349 to DRK VORTAC.

PEACH SPRINGS TRANSITION (HOOVR3.PGS): From over COWBY INT via PGS R-301 to PGS VORTAC.

SW-4, 11 MAR 2010 to 08 APR 2010

SW-4, 11 MAR 2010 to 08 APR 2010