

LAS VEGAS, NEVADA

AL-662 (FAA)

VORTAC LAS <b>116.9</b> Chan 116	APP CRS <b>262°</b>	Rwy 25L Idg TDZE Apt Elev	<b>10526</b> <b>2069</b> <b>2181</b>	Rwy 25R Idg TDZE Apt Elev	<b>12755</b> <b>2067</b> <b>2181</b>
--	------------------------	---------------------------------	--	---------------------------------	--

# VOR RWY 25L/R

LAS VEGAS/MC CARRAN INTL (LAS)

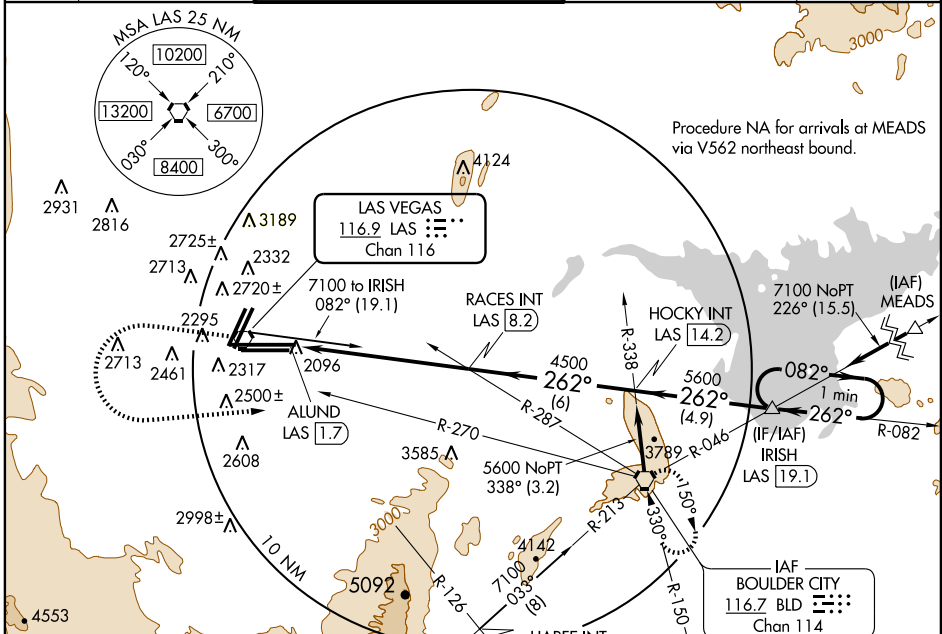
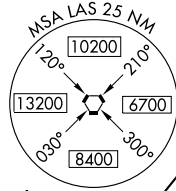
**⚠** Inoperative table does not apply to MALS Rwy 25R.  
 Inoperative table does not apply to MALS Rwy 25L  
 Cat. C.

MALS Rwy 25L

MALS Rwy 25R

MISSED APPROACH: Climb to 4000 then climbing left turn to 6000 via heading 070° and BLD R-270 to BLD VORTAC and hold.

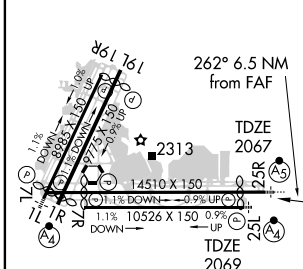
ATIS <b>132.4</b>	LAS VEGAS APP CON <b>125.025 379.15</b>	LAS VEGAS TOWER <b>118.75 257.8</b> (Rwy 1L/19R, 1R/19L) <b>119.9 257.8</b> (Rwy 7L/25R, 7R/25L)	GND CON <b>121.9 270.8</b> E of 1R/19L <b>121.9 254.3</b> W of 1R/19L	CLNC DEL <b>118.0 379.95</b>
----------------------	--	--	---	---------------------------------



Procedure NA for arrivals at MEADS via V562 northeast bound.

Procedure NA for arrivals on BLD VORTAC airway radials 332 CW 016.

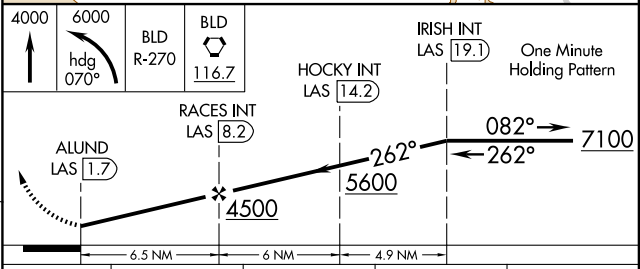
ELEV 2181	<b>D</b>
-----------	----------



REIL Rws 1L, 1R, 7R, 19L and 19R  
 MIRL Rwy 1R-19L  
 HIRL Rws 1L-19R, 7L-25R and 7R-25L

FAF to MAP 6.5 NM

Knots	60	90	120	150	180
Min:Sec	6:30	4:20	3:15	2:36	2:10



CATEGORY	A	B	C	D
S-25R	2720-1	653 (600-1)	2720-1 <sup>3</sup> / <sub>4</sub> 653 (600-1 <sup>3</sup> / <sub>4</sub> )	2720-2 653 (600-2)
S-25L	2720- <sup>3</sup> / <sub>4</sub>	651 (600- <sup>3</sup> / <sub>4</sub> )	2720-1 <sup>3</sup> / <sub>4</sub> 651 (600-1 <sup>3</sup> / <sub>4</sub> )	2720-2 651 (600-2)
CIRCLING	3020-1 839 (900-1)	3020-1 <sup>1</sup> / <sub>4</sub> 839 (900-1 <sup>1</sup> / <sub>4</sub> )	3020-2 <sup>1</sup> / <sub>2</sub> 839 (900-2 <sup>1</sup> / <sub>2</sub> )	3040-2 <sup>3</sup> / <sub>4</sub> 859 (900-2 <sup>3</sup> / <sub>4</sub> )

LAS VEGAS, NEVADA  
 Amdt 3 09351

36°05'N - 115°09'W

# LAS VEGAS/MC CARRAN INTL (LAS) VOR RWY 25L/R

SW-4, 11 MAR 2010 to 08 APR 2010

SW-4, 11 MAR 2010 to 08 APR 2010