

RNAV (GPS) RWY 18

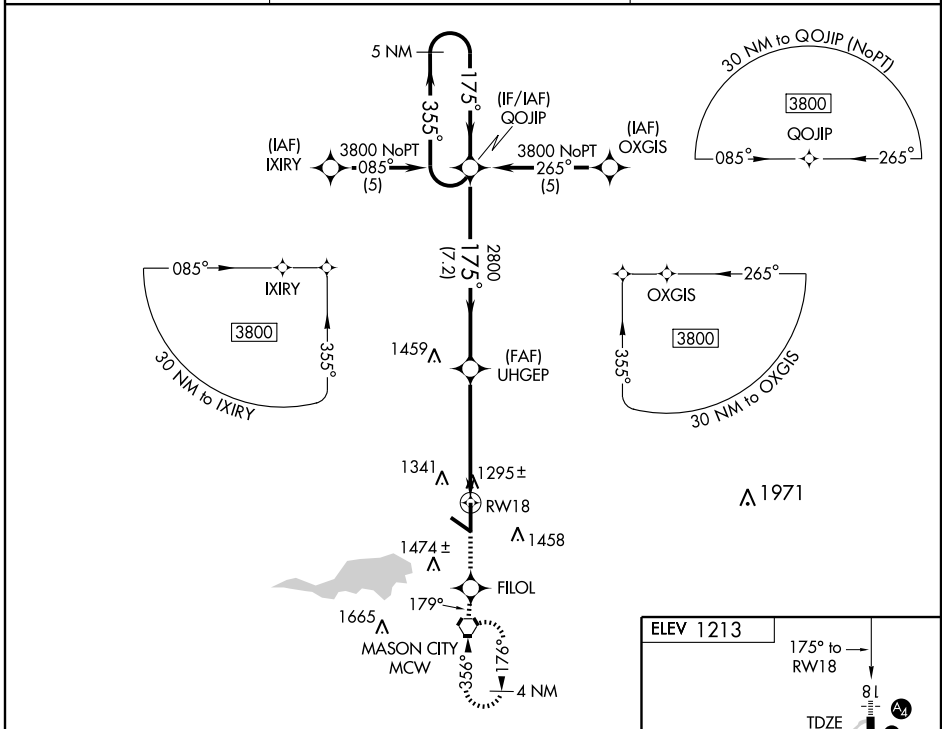
MASON CITY MUNI (MCW)

APP CRS 175°	Rwy Idg 6501
	TDZE 1213
	Apt Elev 1213

▲ Inoperative table does not apply to LNAV/VNAV.
 Baro-VNAV NA when using Charles City altimeter setting.
 If local altimeter setting not received, use Charles City altimeter setting and increase all DAs/MDAs 100 feet. Baro-VNAV NA below -17°C (2°F).
 DME/DME RNP-0.3 NA. VDP NA when using Charles City altimeter setting.

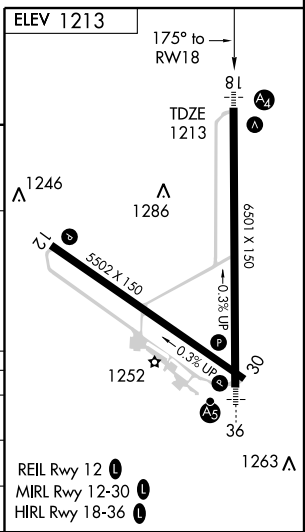
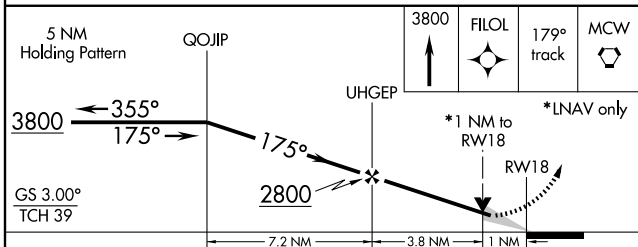
MALS
 MISSED APPROACH: Climb to 3800 direct FILOL and via 179° track to MCW VORTAC and hold, continue climb-in-hold to 3800.

ASOS 120.3	MINNEAPOLIS CENTER 127.3 380.2	UNICOM 123.0 (CTAF) 1
----------------------	--	---------------------------------



NC-3, 11 MAR 2010 to 08 APR 2010

NC-3, 11 MAR 2010 to 08 APR 2010



CATEGORY	A	B	C	D
LNAV/VNAV DA	1628-1½		415 (500-1½)	
LNAV MDA	1560-¾ 347 (400-¾)		1560-1¼ 347 (400-1¼)	
CIRCLING	1660-1½ 447 (500-1½)	1680-1½ 467 (500-1½)	1760-1½ 547 (600-1½)	1840-2 627 (700-2)