

RNAV (GPS) RWY 25

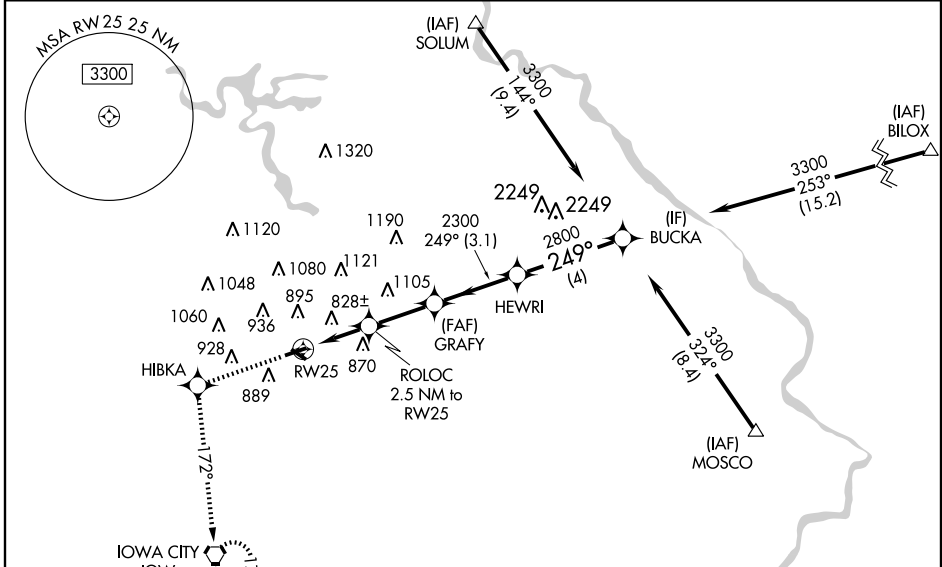
IOWA CITY MUNI (IOW)

WAAS CH 58207 W25A	APP CRS 249°	Rwy Idg 4196 TDZE 657 Apt Elev 684
--	------------------------	---

For uncompensated Baro-VNAV systems, LNAV/VNAV NA below -16°C (4°F) or above 54°C (130°F).
DME/DME RNP- 0.3 NA. Visibility reduction by helicopters NA.
When local altimeter setting not received, use Cedar Rapids altimeter setting and increase all DA 66 feet and LPV and LNAV/VNAV all Cats visibility 1/4 mile, increase all MDA 80 feet.
Baro-VNAV and VDP NA when using Cedar Rapids altimeter setting.

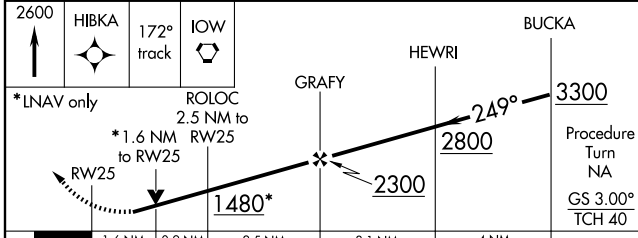
MISSED APPROACH: Climb to 2600 direct HIBKA and via 172° track to IOW VORTAC and hold.

ASOS 128.075	CEDAR RAPIDS APP CON* 119.7 266.8	CLNC DEL 119.05	UNICOM 122.8 (CTAF) 0
------------------------	---	---------------------------	---------------------------------

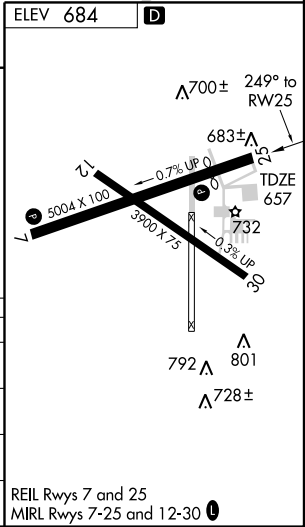


NC-3, 11 MAR 2010 to 08 APR 2010

NC-3, 11 MAR 2010 to 08 APR 2010



CATEGORY	A	B	C	D
LPV DA	1051-1½	394 (400-1½)		NA
LNAV/VNAV DA	1161-1¾	504 (500-1¾)		NA
LNAV MDA	1200-1	543 (600-1)		NA
CIRCLING	1260-1	576 (600-1)		NA



REIL Rwy 7 and 25
MRL Rwy 7-25 and 12-30 0