

IOWA CITY, IOWA

AL-682 (FAA)

RNAV (GPS) RWY 30

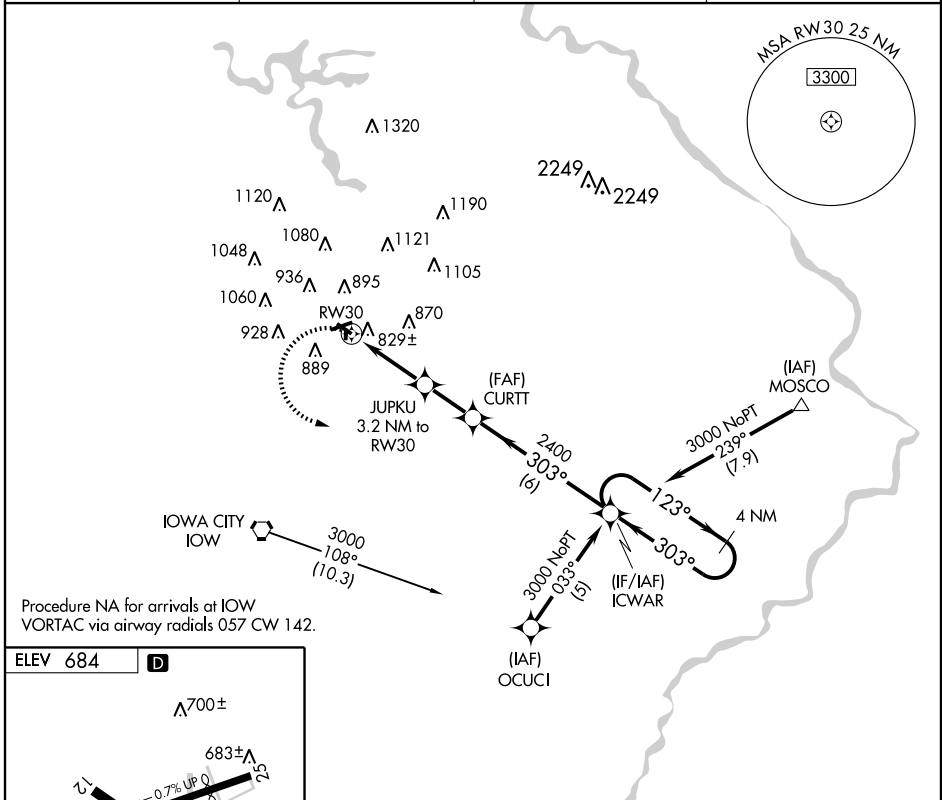
IOWA CITY MUNI (IOW)

APP CRS 303°	Rwy Idg 3900
	TDZE 656
	Apt Elev 684

⚠ DME/DME RNP-0.3 NA. Visibility reduction by helicopters NA.
⚠ When local altimeter setting not received, use Cedar Rapids altimeter setting and increase all MDA 80 feet.

MISSED APPROACH: Climbing left turn to 3000 direct ICWAR and hold.

ASOS 128.075	CEDAR RAPIDS APP CON * 119.7 266.8	CLNC DEL 119.05	UNICOM 122.8 (CTAF) 0*
------------------------	--	---------------------------	----------------------------------

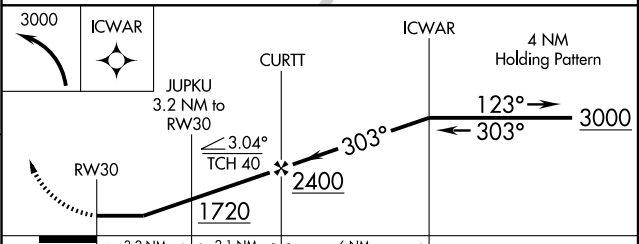


NC-3, 19 NOV 2009 to 17 DEC 2009

NC-3, 19 NOV 2009 to 17 DEC 2009

Procedure NA for arrivals at IOW
 VORTAC via airway radials 057 CW 142.

ELEV 684	D
----------	----------



CATEGORY	A	B	C	D
LNAV MDA	1100-1	444 (500-1)	NA	
CIRCLING	1260-1	576 (600-1)	NA	

IOWA CITY, IOWA
 Orig 09071

41°38'N - 91°33'W

RNAV (GPS) RWY 30

IOWA CITY MUNI (IOW)