

RNAV (GPS) RWY 25

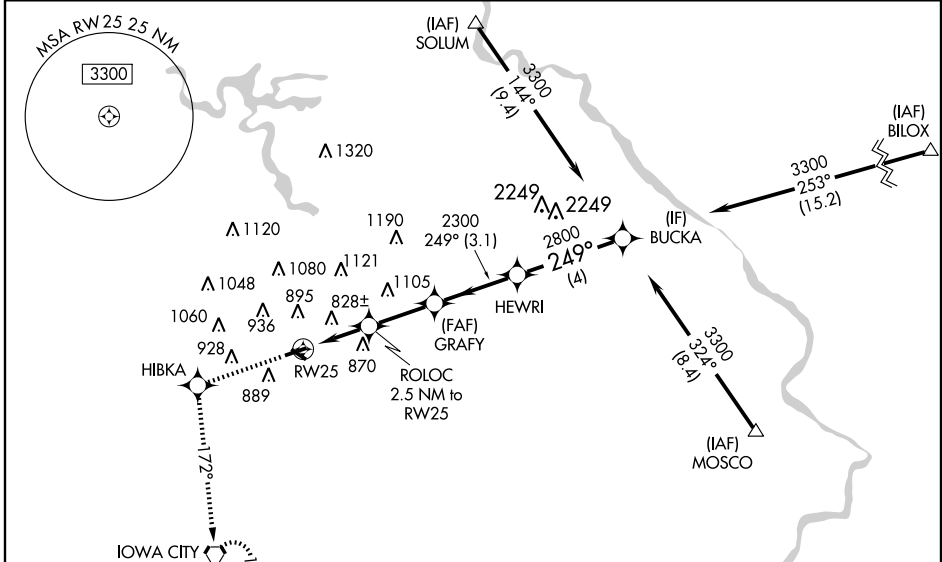
IOWA CITY MUNI (IOW)

WAAS CH 58207 W25A	APP CRS 249°	Rwy Idg 4196 TDZE 657 Apt Elev 684
--	------------------------	---

⚠ For uncompensated Baro-VNAV systems, LNAV/VNAV NA below -16°C (4°F) or above 54°C (130°F).
⚠ DME/DME RNP-0.3 NA. Visibility reduction by helicopters NA.
 When local altimeter setting not received, use Cedar Rapids altimeter setting and increase all DA 66 feet and LPV and LNAV/VNAV all Cats visibility 1/4 mile, increase all MDA 80 feet.
 Baro-VNAV and VDP NA when using Cedar Rapids altimeter setting.

MISSED APPROACH: Climb to 2600 direct HIBKA and via 172° track to IOW VORTAC and hold.

ASOS 128.075	CEDAR RAPIDS APP CON* 119.7 266.8	CLNC DEL 119.05	UNICOM 122.8 (CTAF) 0 *
------------------------	---	---------------------------	--



NC-3, 19 NOV 2009 to 17 DEC 2009

NC-3, 19 NOV 2009 to 17 DEC 2009

2600 HIBKA 172° track IOW *LNAV only *1.6 NM to RW25 ROLOC 2.5 NM to RW25 RW25 1480* 1.6 NM 0.9 NM 2.5 NM 3.1 NM 4 NM		HEWRI 249° 3300 GRAFY 2800 BUCKA 3300 Procedure Turn NA GS 3.00° TCH 40		
CATEGORY	A	B	C	D
LPV DA	1051-1½	394 (400-1½)		NA
LNAV/VNAV DA	1161-1¾	504 (500-1¾)		NA
LNAV MDA	1200-1	543 (600-1)		NA
CIRCLING	1260-1	576 (600-1)		NA

