

# RNAV (GPS) RWY 34

REDDING MUNI (RDD)

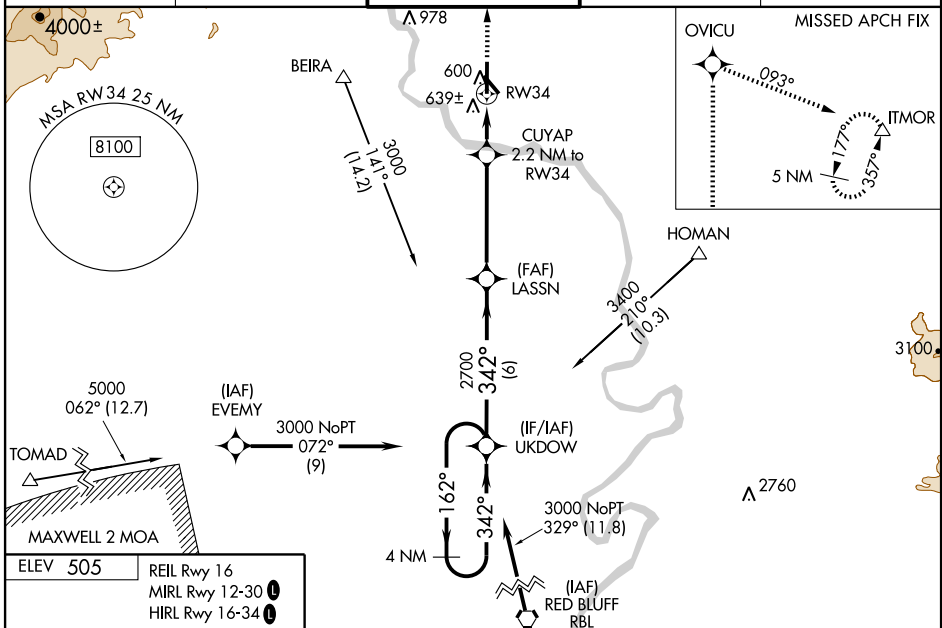
|  |                        |   |
|--|------------------------|---|
| WAAS<br>CH <b>56402</b><br><b>W34A</b> | APP CRS<br><b>342°</b> | Rwy Idg <b>7003</b><br>TDZE <b>499</b><br>Apt Elev <b>505</b> |
|--|------------------------|---|

**⚠** DME/DME RNP-0.3 NA. Circling to Rwy 12 NA at night. For inoperative MALSR, increase LPV all Cats. visibility to 1 1/4 mile. When using Red Bluff altimeter setting increase LPV all Cats. visibility to 1 1/4 mile. For uncompensated Baro-VNAV systems, LNAV/VNAV NA below -16°C(4°F) or above 48°C(118°F). VDP and Baro-VNAV NA when using Red Bluff altimeter setting. When local altimeter setting not received, use Red Bluff altimeter setting and increase all DAs/MDAs 80 feet, and increase LPV visibility 1/2 mile all Cats., LNAV/VNAV visibility 1/2 mile all Cats., and LNAV visibility Cat. C/D 1/4 mile.

**MALSR**

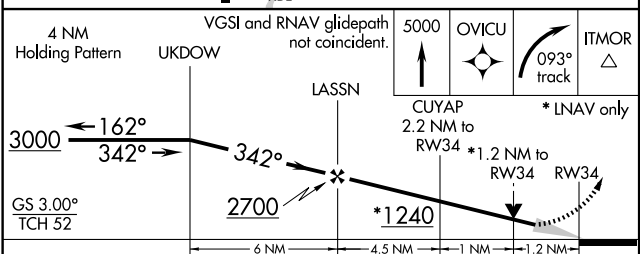
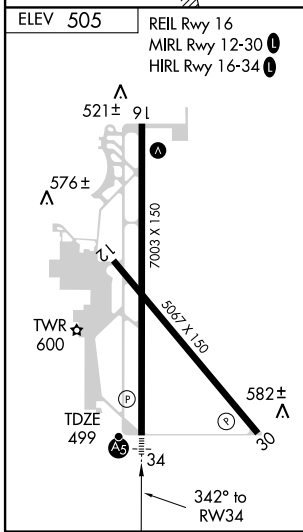
**MISSED APPROACH:**  
Climb to 5000 direct OVICU and right turn via 093° track to ITMOR and hold, continue climb-in-hold to 5000.

|                      |                                      |   |                         |                         |
|----------------------|--------------------------------------|---|-------------------------|-------------------------|
| ATIS<br><b>124.1</b> | OAKLAND CENTER<br><b>132.2 350.3</b> | <b>REDDING TOWER *</b><br><b>119.8(CTAF) 0 269.25</b> | GND CON<br><b>121.7</b> | UNICOM<br><b>122.95</b> |
|----------------------|--------------------------------------|---|-------------------------|-------------------------|



SW-2, 11 MAR 2010 to 08 APR 2010

SW-2, 11 MAR 2010 to 08 APR 2010



| CATEGORY     | A       | B             | C                             | D                     |
|--------------|---------|---------------|-------------------------------|-----------------------|
| LPV DA       |         | 790-1/2       | 291 (300-1/2)                 |                       |
| LNAV/VNAV DA |         | 944-1         | 445 (500-1)                   |                       |
| LNAV MDA     | 940-1/2 | 441 (500-1/2) | 940-3/4<br>441 (500-3/4)      | 940-1<br>441 (500-1)  |
| CIRCLING     | 1000-1  | 495 (500-1)   | 1000-1 1/2<br>495 (500-1 1/2) | 1060-2<br>555 (600-2) |