

# VOR RWY 34

REDDING MUNI (RDD)

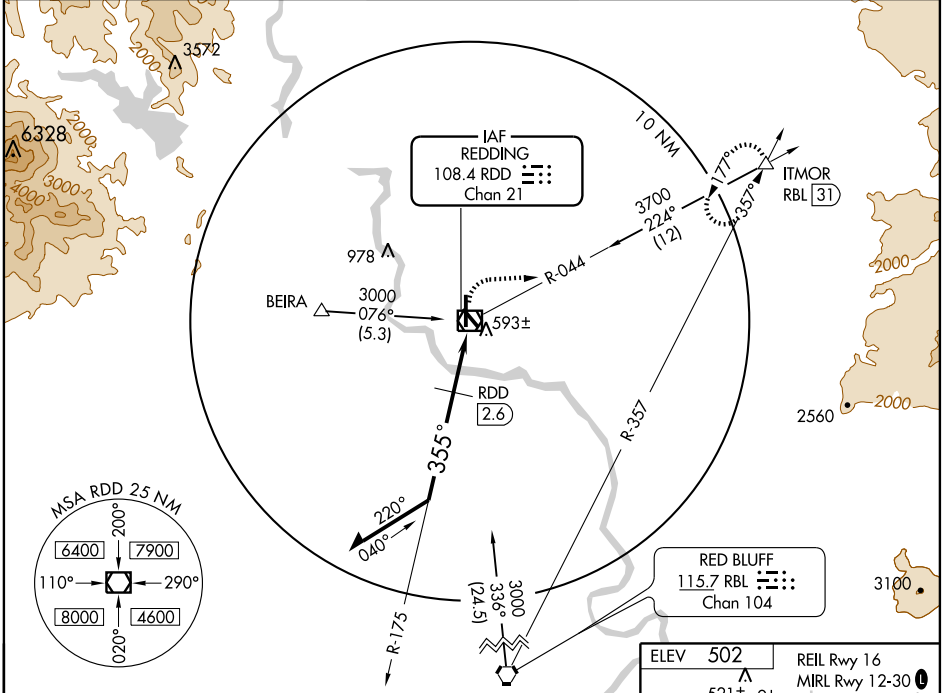
VOR/DME RDD	APP CRS	Rwy Idg TDZE	<b>7003</b>
<b>108.4</b>	<b>355°</b>	Apt Elev	<b>496</b>
Chan 21			<b>502</b>

▼ Cat. D S-34 DME minimums visibility increased ¼ mile for inoperative MALS/R.



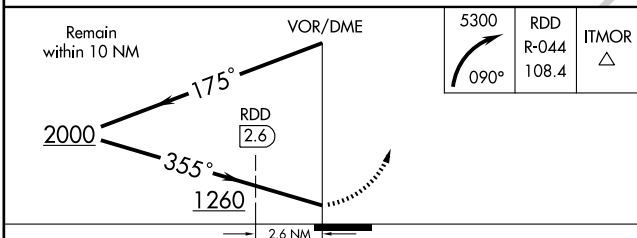
MISSED APPROACH: Climbing right turn to 5300 via heading 090° and RDD R-044 to ITMOR INT and hold.

ATIS <b>124.1</b>	OAKLAND CENTER <b>132.2 350.3</b>	<b>REDDING TOWER ★</b> <b>119.8(CTAF) 269.25</b>	GND CON <b>121.7</b>	UNICOM <b>122.95</b>
----------------------	--------------------------------------	---	-------------------------	-------------------------



SW-2, 11 MAR 2010 to 08 APR 2010

SW-2, 11 MAR 2010 to 08 APR 2010



CATEGORY	A	B	C	D
S-34	1260-½ 764 (800-½)	1260-¾ 764 (800-¾)	1260-1¼ 764 (800-1¼)	1260-2 764 (800-2)
CIRCLING	1260-1 758 (800-1)	1260-1¼ 758 (800-1¼)	1260-2¼ 758 (800-2¼)	1260-2½ 758 (800-2½)
DME MINIMUMS				
S-34	860-½ 364 (400-½)			860-1 364 (400-1)
CIRCLING	920-1 418 (500-1)	960-1 458 (500-1)	960-1½ 458 (500-1½)	1060-2 558 (600-2)

