

RIVERTON, WYOMING

AL-691 (FAA)

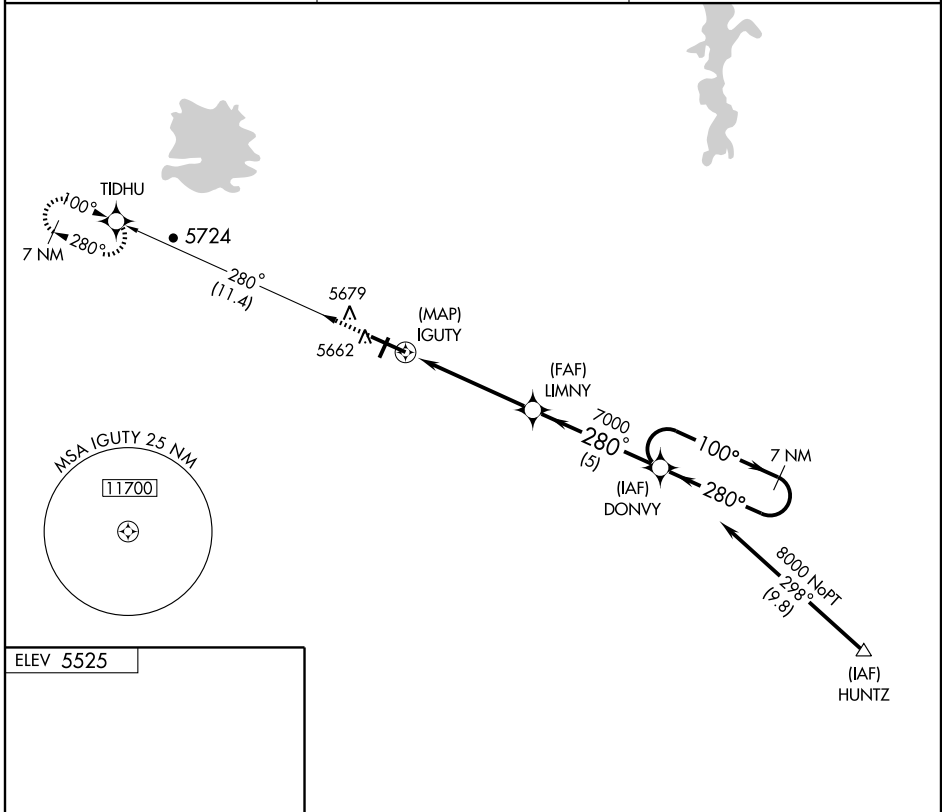
GPS RWY 28

RIVERTON RGNL (RIW)

APP CRS 280°	Rwy Idg 8203	TDZE 5456	Apt Elev 5525
------------------------	------------------------	---------------------	-------------------------

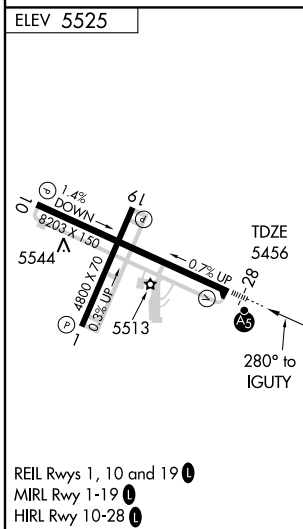
<p>▼ For inoperative MALSRS increase S-28 Cat D visibility to 1½ mile.</p> <p>▲ NA</p>	<p>MALSRS</p>	<p>MISSED APPROACH: Climb to 9000 via 280° course to TIDHU WP and hold.</p>
--	----------------------	--

<p>ASOS 121.425</p>	<p>CASPER RADIO 122.2</p>	<p>UNICOM 122.8 (CTAF) ①</p>
---------------------------------------	---	--



NW-1, 14 JAN 2010 to 11 FEB 2010

NW-1, 14 JAN 2010 to 11 FEB 2010



<p>9000</p> <p>↑</p> <p>280°</p> <p>TIDHU</p>	<p>7 NM</p> <p>Holding Pattern</p> <p>DONVY</p>			
<p>IGUTY</p> <p>280°</p> <p>7000</p> <p>2.85° TCH 50</p>	<p>LIMNY</p> <p>280°</p> <p>100°</p> <p>8000</p>			
<p>0.9</p> <p>4.1 NM</p> <p>5 NM</p>				
<p>CATEGORY</p>	<p>A</p>	<p>B</p>	<p>C</p>	<p>D</p>
<p>S-28</p>	<p>5820-½</p>	<p>364 (300-½)</p>	<p>5820-1</p>	<p>364 (300-1)</p>
<p>CIRCLING</p>	<p>5980-1</p>	<p>455 (500-1)</p>	<p>5980-1½</p>	<p>6080-2</p>
			<p>455 (500-1½)</p>	<p>555 (600-2)</p>

RIVERTON, WYOMING
Orig-A 09183

43°04'N - 108°28'W

RIVERTON RGNL (RIW)

GPS RWY 28