

RNAV (GPS) RWY 13

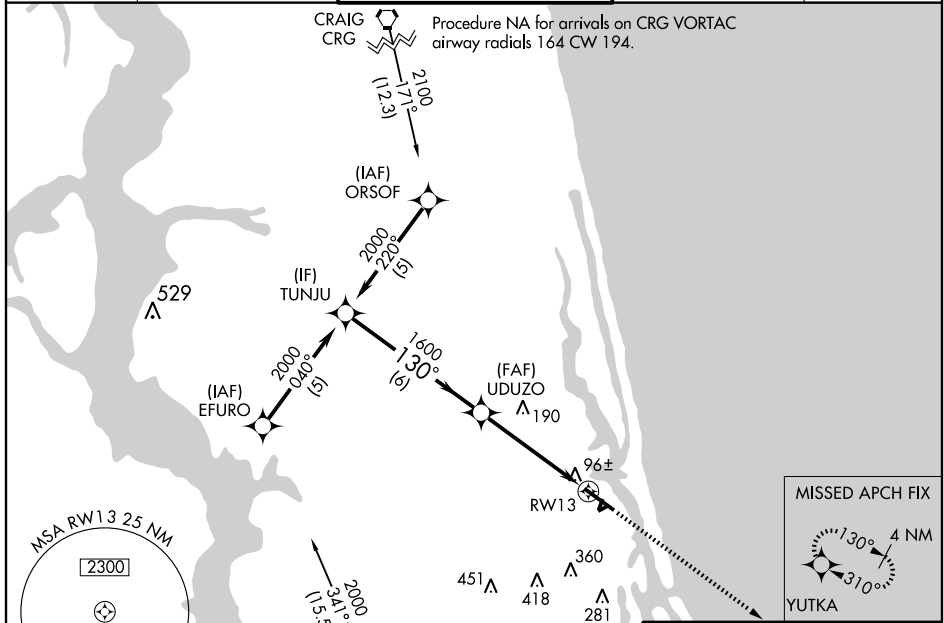
ST. AUGUSTINE (SGJ)

| | | |
|--|------------------------|---|
| WAAS CH 77711 W13A | APP CRS 130° | Rwy Idg 6938 TDZE 10 Apt Elev 10 |
|--|------------------------|---|

▼ Baro-VNAV NA when using Jacksonville NAS/Towers Field altimeter setting. For uncompensated Baro-VNAV systems, LNAV/VNAV NA below -15°C (5°F) or above 48°C (118°F). DME/DME RNP-0.3 NA. Visibility reduction by helicopters NA. When local altimeter setting not received, use Jacksonville NAS/Towers Field altimeter setting and increase all DA 57 feet and all MDA 60 feet, increase LPV and LNAV/VNAV all Cats. visibility ¼ mile.

▲ MISSED APPROACH: Climb to 2000 direct YUTKA and hold.

| | | | | |
|------------------------|---|---|-----------------------------------|-------------------------|
| ATIS 119.625 | JACKSONVILLE APP CON 120.75 308.4 | ST AUGUSTINE TOWER ★ 127.625 (CTAF) 269.475 | GND CON 121.175 251.125 | UNICOM 122.95 |
|------------------------|---|---|-----------------------------------|-------------------------|



SE-3, 11 MAR 2010 to 08 APR 2010

SE-3, 11 MAR 2010 to 08 APR 2010



| | | | | | |
|-------------------|---|-------------|------------------------|------------------------|-------|
| Procedure Turn NA | VGSI and RNAV glidepath not coincident. | | | 2000 | YUTKA |
| GS 3.00° TCH 58 | 6 NM | | 4.8 NM | | |
| CATEGORY | A | B | C | D | |
| LPV DA | | 357-1¼ | 347 (400-1¼) | | |
| LNAV/DA | | 391-1¼ | 381 (400-1¼) | | |
| LNAV MDA | 440-1 | 430 (500-1) | 440-1¼ 430 (500-1¼) | 440-1½ 430 (500-1½) | |
| CIRCLING | 460-1 | 450 (500-1) | 460-1½ 450 (500-1½) | 580-2 570 (600-2) | |

