

APP CRS	Rwy Idg	<b>8000</b>
<b>179°</b>	TDZE	<b>406</b>
	Apt Elev	<b>406</b>

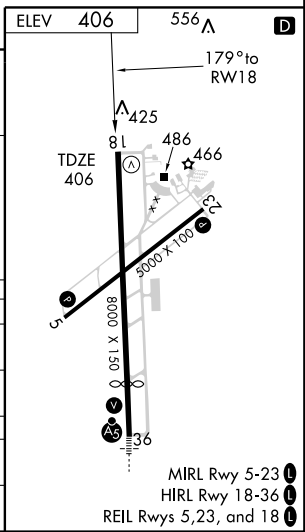
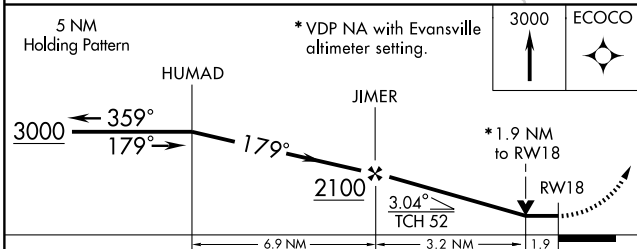
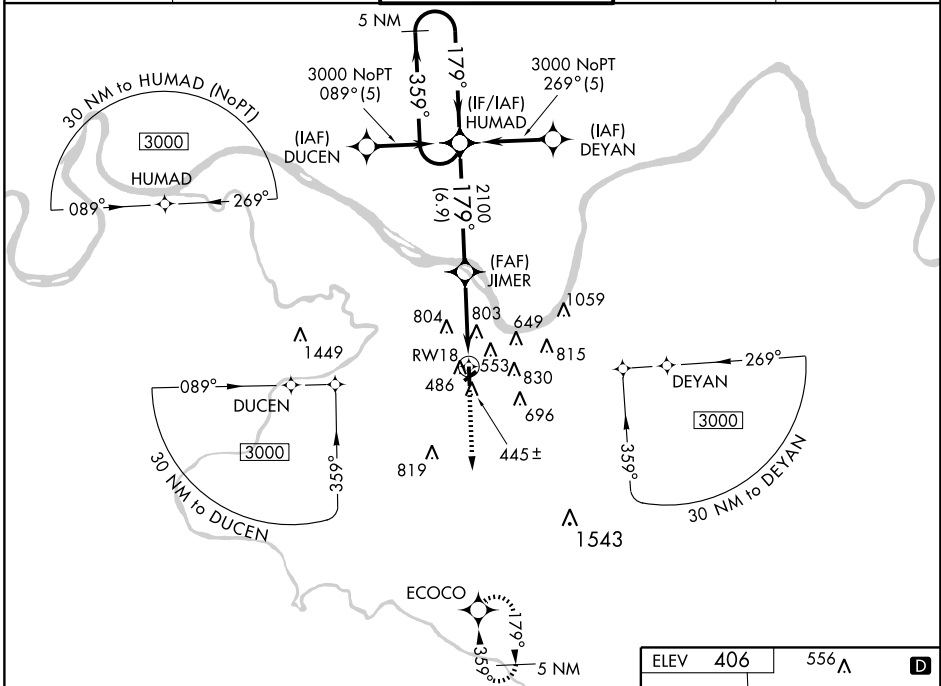
# RNAV (GPS) RWY 18

OWENSBORO-DAVIESS COUNTY (OWB)

**▼** When control tower closed, use Evansville altimeter setting.  
**▲ NA** GPS or RNP-0.3 Required.  
 DME/DME RNP-0.3 NA.

MISSED APPROACH: Climb to 3000 direct ECOCO WP and hold.

ASOS <b>124.325</b>	EVANSVILLE APP CON* <b>126.4 226.4</b>	OWENSBORO TOWER* <b>120.7 (CTAF) 251.15</b>	GND CON <b>121.7</b>	UNICOM <b>122.95</b>
------------------------	---	--	-------------------------	-------------------------



CATEGORY	A	B	C	D
LNVA MDA	1060-1	654 (700-1)	1060-1 <sup>3</sup> / <sub>4</sub> 654 (700-1 <sup>3</sup> / <sub>4</sub> )	1060-2 654 (700-2)
CIRCLING	1060-1	654 (700-1)	1120-2 714 (800-2)	1140-2 <sup>1</sup> / <sub>4</sub> 734 (800-2 <sup>1</sup> / <sub>4</sub> )
EVANSVILLE ALTIMETER SETTING MINIMUMS				
LNVA MDA	1120-1	714 (800-1)	1120-2 714 (800-2)	1120-2 <sup>1</sup> / <sub>4</sub> 714 (800-2 <sup>1</sup> / <sub>4</sub> )
CIRCLING	1120-1	714 (800-1)	1180-2 <sup>1</sup> / <sub>4</sub> 774 (800-2 <sup>1</sup> / <sub>4</sub> )	1200-2 <sup>1</sup> / <sub>2</sub> 794 (800-2 <sup>1</sup> / <sub>2</sub> )

SE-1, 19 NOV 2009 to 17 DEC 2009

SE-1, 19 NOV 2009 to 17 DEC 2009