

OWENSBORO, KENTUCKY

AL-707 (FAA)

APP CRS 233°	Rwy Idg 5000
	TDZE 403
	Apt Elev 406

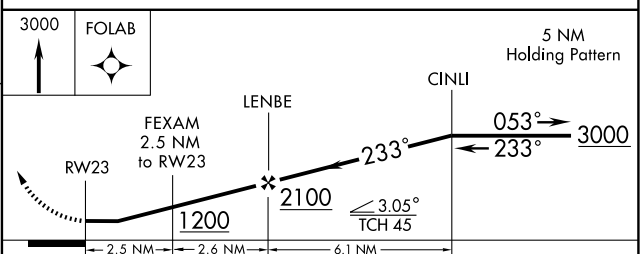
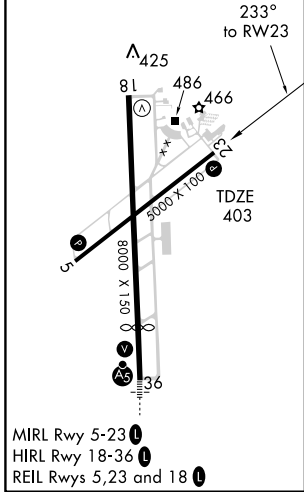
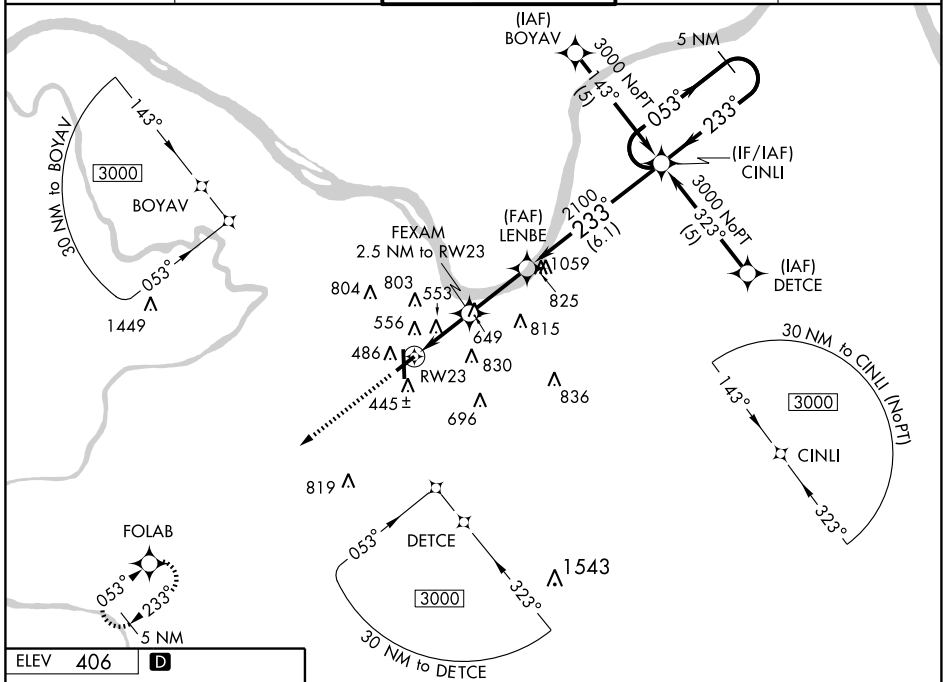
RNAV (GPS) RWY 23

OWENSBORO-DAVIESS COUNTY (OWB)

NA When control tower closed, use Evansville altimeter setting.
GPS or RNP-0.3 Required.
DME/DME RNP-0.3 NA.

MISSED APPROACH: Climb to 3000 direct FOLAB WP and hold.

ASOS 124.325	EVANSVILLE APP CON* 126.4 226.4	OWENSBORO TOWER* 120.7 (CTAF) 0 251.15	GND CON 121.7	UNICOM 122.95
------------------------	---	--	-------------------------	-------------------------



CATEGORY	A	B	C	D
LNAV MDA	820-1	417 (500-1)	820-1¼	417 (500-1¼)
CIRCLING	860-1	454 (500-1)	1120-2	1140-2¼
			714 (800-2)	734 (800-2¼)
EVANSVILLE ALTIMETER SETTING MINIMUMS				
LNAV MDA	880-1	477 (500-1)	880-1¼	880-1½
			477 (500-1¼)	477 (500-1½)
CIRCLING	920-1	514 (600-1)	1180-2¼	1200-2½
			774 (800-2¼)	794 (800-2½)

OWENSBORO, KENTUCKY
Orig 09183

37°44'N-87°10'W

OWENSBORO-DAVIESS COUNTY (OWB)

RNAV (GPS) RWY 23

SE-1, 19 NOV 2009 to 17 DEC 2009

SE-1, 19 NOV 2009 to 17 DEC 2009