

# RNAV (GPS) RWY 5

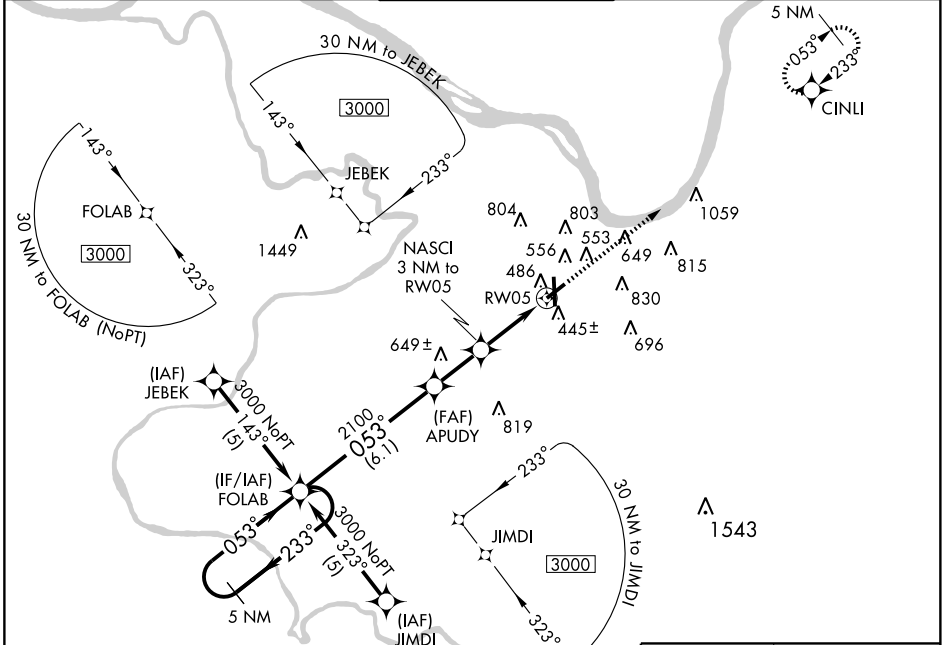
OWENSBORO-DAVIESS COUNTY (OWB)

APP CRS	Rwy Idg	<b>5000</b>
<b>053°</b>	TDZE	<b>405</b>
	Apt Elev	<b>406</b>

**NA** When control tower closed, use Evansville altimeter setting.  
GPS or RNP-0.3 Required.  
DME/DME RNP-0.3 NA.

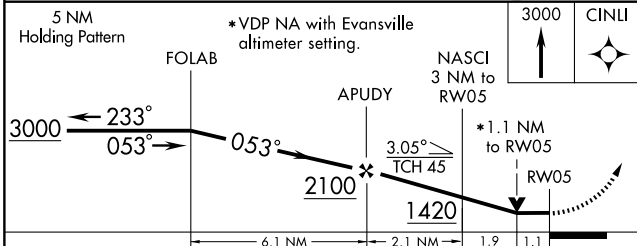
**MISSED APPROACH:** Climb to 3000 direct CINLI WP and hold.

ASOS <b>124.325</b>	EVANSVILLE APP CON* <b>126.4 226.4</b>	OWENSBORO TOWER* <b>120.7 (CTAF) 251.15</b>	GND CON <b>121.7</b>	UNICOM <b>122.95</b>
------------------------	---	--	-------------------------	-------------------------

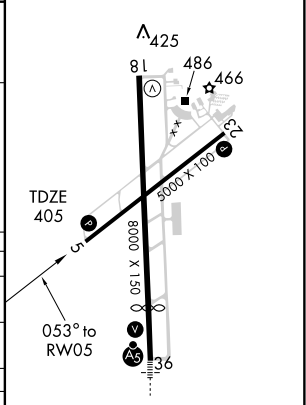


SE-1, 11 MAR 2010 to 08 APR 2010

SE-1, 11 MAR 2010 to 08 APR 2010



ELEV	406	<b>D</b>
------	-----	----------



CATEGORY	A	B	C	D
LNVA MDA	800-1	395 (400-1)		800-1¼ 395 (400-1¼)
CIRCLING	860-1	454 (500-1)	1120-2 714 (800-2)	1140-2¼ 734 (800-2¼)
<b>EVANSVILLE ALTIMETER SETTING MINIMUMS</b>				
LNVA MDA	860-1	455 (500-1)	860-1¼ 455 (500-1¼)	860-1½ 455 (500-1½)
CIRCLING	920-1	514 (600-1)	1180-2¼ 774 (800-2¼)	1200-2½ 794 (800-2½)

MIRL Rwy 5-23  
HIRL Rwy 18-36  
REIL Rws 5,23, and 18