

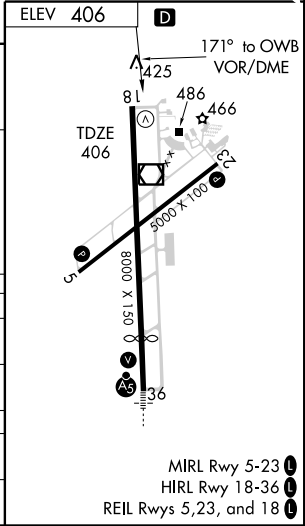
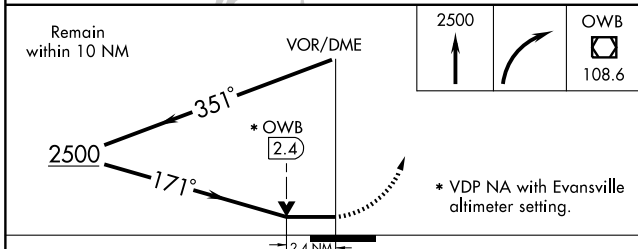
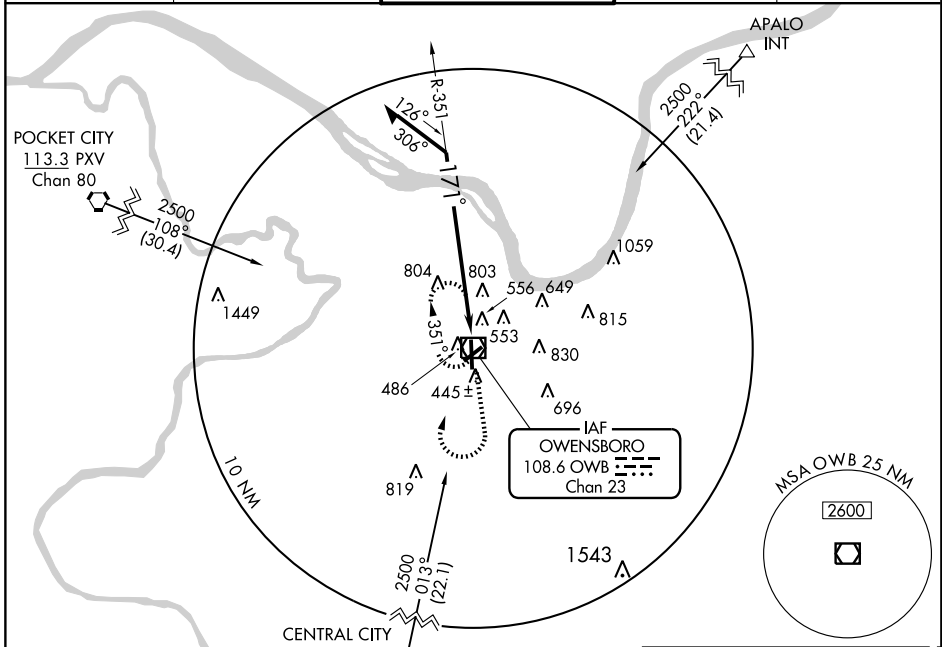
# VOR RWY 18

OWENSBORO-DAVIESS COUNTY (OWB)

VOR/DME OWB <b>108.6</b> Chan <b>23</b>	APP CRS <b>171°</b>	Rwy Idg TDZE <b>406</b> Apt Elev <b>406</b>	<b>8000</b>
---	------------------------	---	-------------

**⚠** When control tower closed, use Evansville altimeter setting. MISSED APPROACH: Climb to 2500 then right turn direct OWB VOR/DME and hold.

ASOS <b>124.325</b>	EVANSVILLE APP CON* <b>126.4 226.4</b>	OWENSBORO TOWER* <b>120.7 (CTAF) 251.15</b>	GND CON <b>121.7</b>	UNICOM <b>122.95</b>
------------------------	---	--	-------------------------	-------------------------



CATEGORY	A	B	C	D
S-18	1120-1	714 (800-1)	1120-2 714 (800-2)	1120-2¼ 714 (800-2¼)
CIRCLING	1120-1	714 (800-1)	1120-2 714 (800-2)	1140-2¼ 734 (800-2¼)
EVANSVILLE ALTIMETER SETTING MINIMUMS				
S-18	1180-1 774 (800-1)	1180-1¼ 774 (800-1¼)	1180-2¼ 774 (800-2¼)	1180-2½ 774 (800-2½)
CIRCLING	1180-1 774 (800-1)	1180-1¼ 774 (800-1¼)	1180-2¼ 774 (800-2¼)	1200-2½ 794 (800-2½)

SE-1, 11 MAR 2010 to 08 APR 2010

SE-1, 11 MAR 2010 to 08 APR 2010