

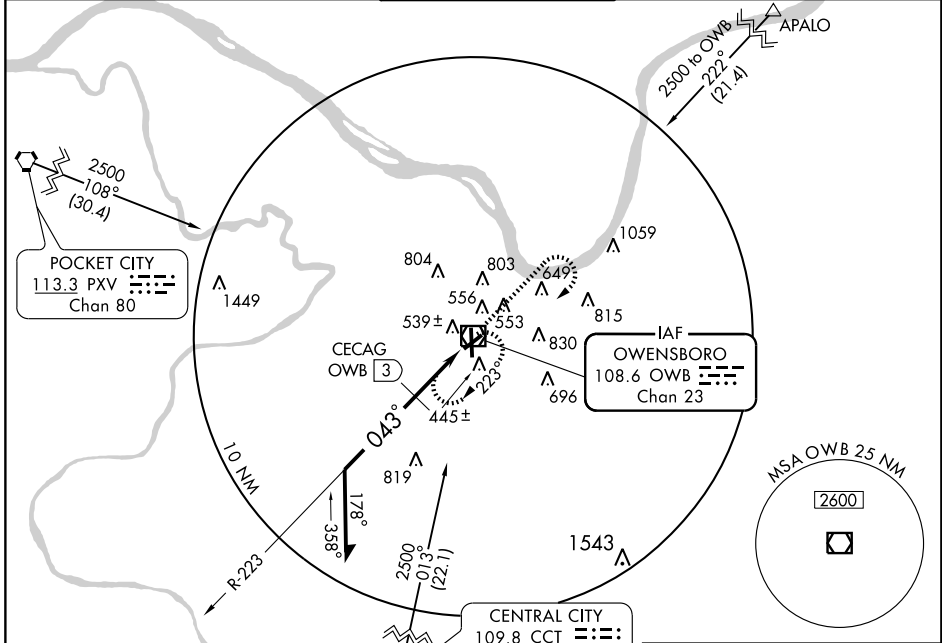
# VOR RWY 5

OWENSBORO-DAVISS COUNTY (OWB)

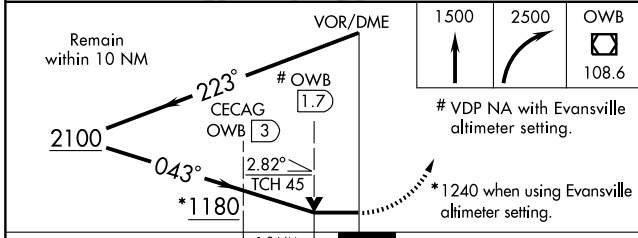
VOR/DME OWB <b>108.6</b> Chan 23	APP CRS <b>043°</b>	Rwy Idg TDZE Apt Elev	<b>5000</b> <b>405</b> <b>406</b>
--	------------------------	-----------------------------	---

**▼** When control tower closed, use Evansville altimeter setting and increase all MDAs 60 feet and visibility Cats. C and D  $\frac{1}{4}$  mile.  
**▲** MISSED APPROACH: Climb to 1500, then climbing right turn to 2500 direct OWB VOR/DME and hold.

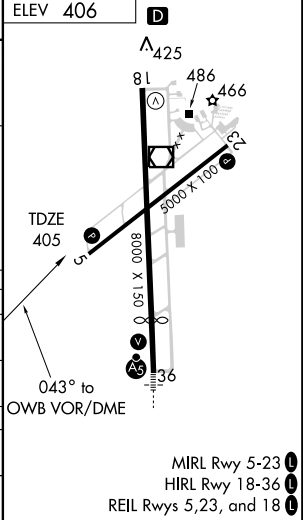
ASOS <b>124.325</b>	EVANSVILLE APP CON* <b>126.4 226.4</b>	OWENSBORO TOWER* <b>120.7 (CTAF) 251.15</b>	GND CON <b>121.7</b>	UNICOM <b>122.95</b>
------------------------	---	--	-------------------------	-------------------------



ELEV 406	<b>D</b>
----------	----------



CATEGORY	A	B	C	D
S-5	1180-1 775 (800-1)	1180-1¼ 775 (800-1¼)	1180-2¼ 775 (800-2¼)	1180-2½ 775 (800-2½)
CIRCLING	1180-1 774 (800-1)	1180-1¼ 774 (800-1¼)	1180-2¼ 774 (800-2¼)	1180-2½ 774 (800-2½)
CECAG FIX MINIMUMS				
S-5	820-1	415 (500-1)	820-1¼	415 (500-1¼)
CIRCLING	860-1	454 (500-1)	1120-2 714 (800-2)	1140-2¼ 734 (800-2¼)



SE-1, 19 NOV 2009 to 17 DEC 2009

SE-1, 19 NOV 2009 to 17 DEC 2009