

RNAV (GPS) RWY 36

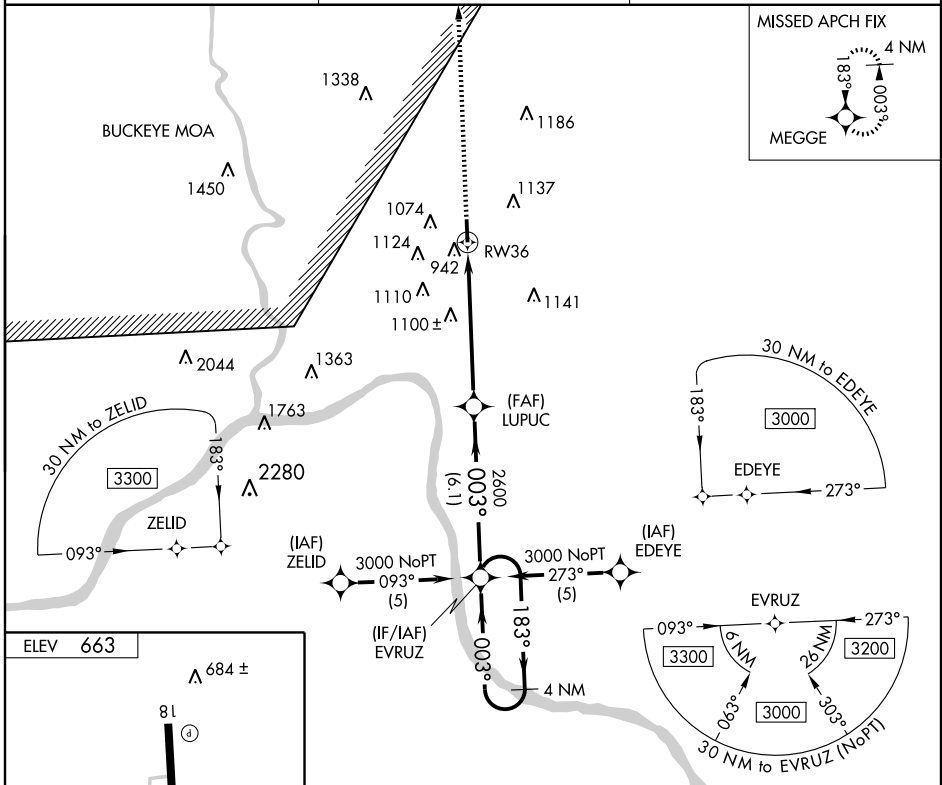
PORTSMOUTH/GREATER PORTSMOUTH RGNL (PMH)

WAAS CH 70408 W36A	APP CRS 003°	Rwy Ldg TDZE 662 Apt Elev 663	5001
--	------------------------	---	-------------

▼ When local altimeter setting not received, use Huntington altimeter setting and increase all DA 96 feet and all MDA 100 feet and LPV visibility ¼ mile all Cats, LNAV Cat B visibility ¼ mile, Cat C, D visibility ½ mile, and Circling Cat B visibility ¼ mile, Cat C visibility ½ mile and Cat D visibility ¼ mile. Visibility reduction by helicopters NA. DME/DME RNP-0.3 NA.

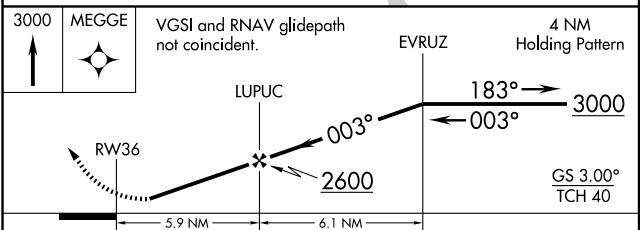
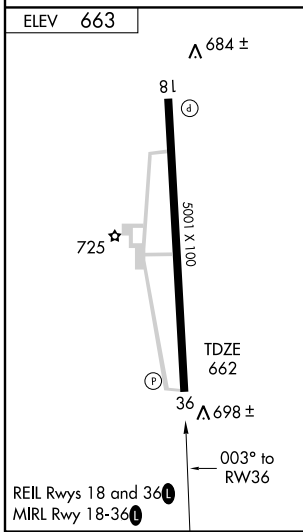
MISSED APPROACH:
Climb to 3000 direct MEGGE and hold.

AWOS-3 125.175	HUNTINGTON APP CON 128.4 270.1	UNICOM 122.8 (CTAF) 0
--------------------------	--	---------------------------------



EC-2, 19 NOV 2009 to 17 DEC 2009

EC-2, 19 NOV 2009 to 17 DEC 2009



CATEGORY	A	B	C	D
LPV DA	912-1 250 (300-1)			
LNAV MDA	1400-1	738 (800-1)	1400-2 738 (800-2)	1400-2½ 738 (800-2½)
CIRCLING	1400-1	737 (800-1)	1400-2 737 (800-2)	1440-2½ 777 (800-2½)