

VOR RWY 23

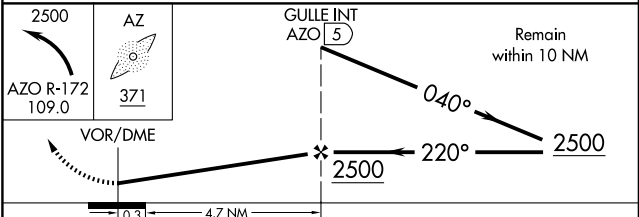
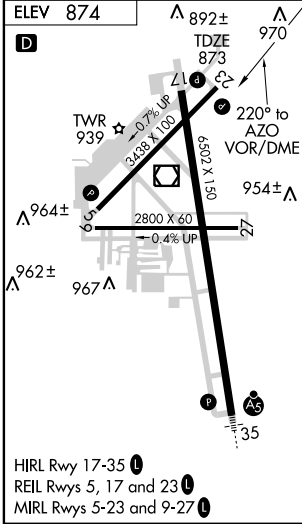
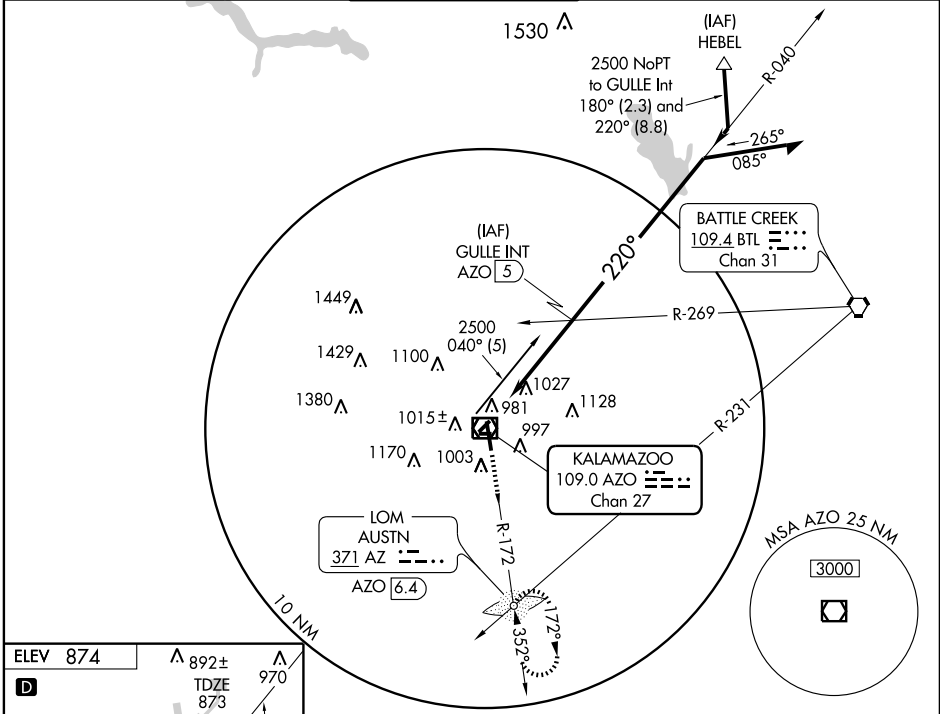
KALAMAZOO/BATTLE CREEK INTL (AZO)

VOR/DME AZO 109.0 Chan 27	APP CRS 220°	Rwy Idg 3438 TDZE 873 Apt Elev 874
--	------------------------	---

ASR When Control Tower closed, except for operators with approved weather reporting service, use South Bend altimeter setting.

MISSED APPROACH: Climbing left turn to 2500 via AZO R-172 to AUSTN LOM/Int/AZO 6.4 DME and hold.

ATIS 127.25	KALAMAZOO APP CON * 121.2 340.9	KALAMAZOO TOWER * 118.3 (CTAF) 0 308.6	GND CON 121.9	CLNC DEL 121.75	UNICOM 122.95
-----------------------	---	--	-------------------------	---------------------------	-------------------------



CATEGORY	A	B	C	D
S-23	1300-1	427 (500-1)	1300-1¼ 427 (500-1¼)	1300-1½ 427 (500-1½)
CIRCLING	1320-1 446 (500-1)	1340-1 466 (500-1)	1340-1½ 466 (500-1½)	1440-2 566 (600-2)
SOUTH BEND ALTIMETER SETTING MINIMUMS				
S-23	1520-1	647 (700-1)	1520-1¾ 647 (700-1¾)	1520-2 647 (700-2)
CIRCLING	1540-1	666 (700-1)	1560-2 686 (700-2)	1640-2½ 766 (800-2½)

EC-1, 11 MAR 2010 to 08 APR 2010

EC-1, 11 MAR 2010 to 08 APR 2010