

LONDON, KENTUCKY

AL-720 (FAA)

RNAV (GPS) RWY 24

LONDON-CORBIN AIRPORT-MAGEE FIELD (LOZ)

WAAS CH 78108 W24A	APP CRS 237°	Rwy Idg 5100 TDZE 1201 Apt Elev 1212
---------------------------------	------------------------	---

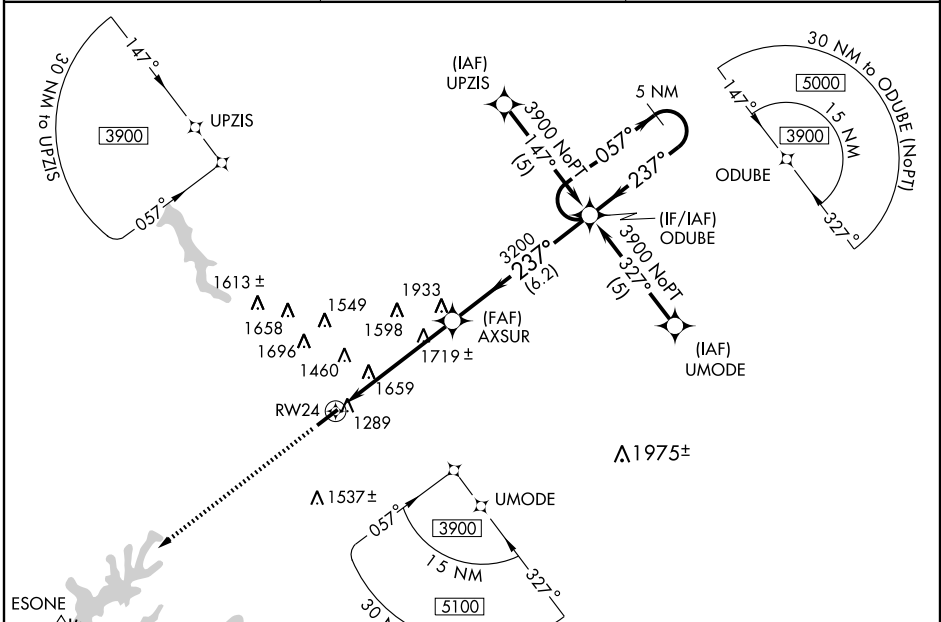
⚠ DME/DME RNP-0.3 NA. Visibility reduction by helicopters NA.
⚠ When local altimeter setting not received, use Somerset altimeter setting and increase all DA/MDAs 100 feet, increase LPV all Cats, LNAV Cats C/D, and circling Cats C/D visibilities ½ mile.

MISSED APPROACH:
 Climb to 3900 direct
 ESONE and hold.

ASOS
119.075

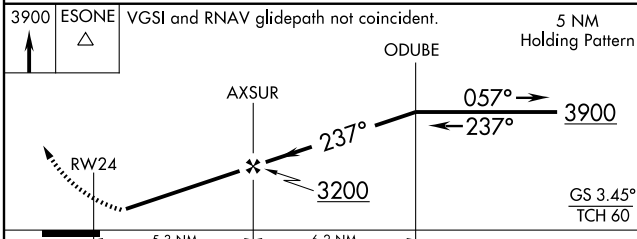
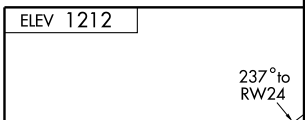
INDIANAPOLIS CENTER
124.625 371.925

UNICOM
123.0 (CTAF) 0

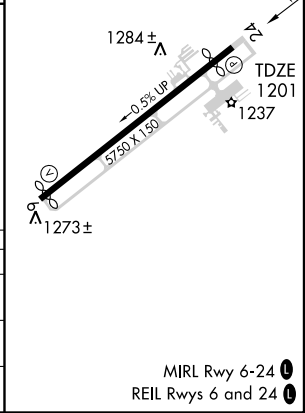


SE-1, 19 NOV 2009 to 17 DEC 2009

SE-1, 19 NOV 2009 to 17 DEC 2009



CATEGORY	A	B	C	D
LPV DA	1510-1 309 (300-1)		C	NA
LNAV MDA	1980-1 779 (800-1)	1980-1¼ 779 (800-1¼)	1980-2¼ 779 (800-2¼)	1980-2½ 779 (800-2½)
CIRCLING	1980-1 768 (800-1)	1980-1¼ 768 (800-1¼)	2040-2½ 828 (900-2½)	2040-2¾ 828 (900-2¾)



LONDON, KENTUCKY
 Amdt 1 09183

LONDON-CORBIN AIRPORT-MAGEE FIELD (LOZ)
 37°05'N-84°05'W

RNAV (GPS) RWY 24

MIRL Rwy 6-24 0
 REIL Rwys 6 and 24 0