

LONDON, KENTUCKY

AL-720 (FAA)

# RNAV (GPS) RWY 6

LONDON-CORBIN AIRPORT-MAGEE FIELD (LOZ)

WAAS CH <b>65799</b> <b>W06A</b>	APP CRS <b>057°</b>	Rwy Idg TDZE Apt Elev	<b>5650</b> <b>1212</b> <b>1212</b>
--	------------------------	-----------------------------	---

DME/DME RNP-0.3 NA. If local altimeter setting not received, use Somerset altimeter setting and increase all DAs/MDAs 100 feet. For uncompensated Baro-VNAV systems, LNAV/VNAV NA below -17° C (2° F) or above 46° C (116° F). Baro-VNAV and VDP NA when using Somerset altimeter setting.

MISSED APPROACH: Climb to 3900 direct ODUBE and hold.

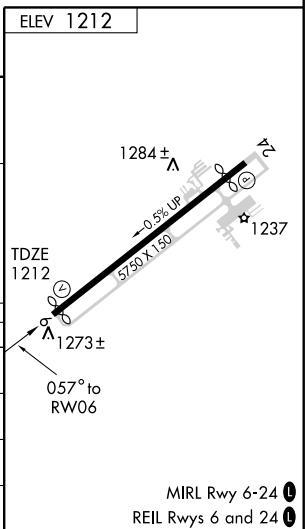
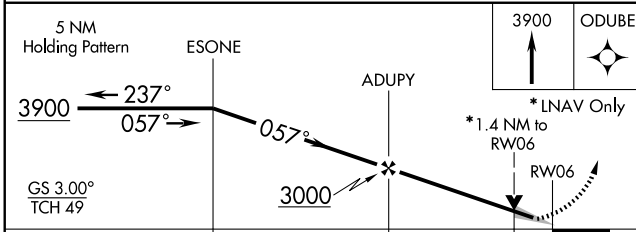
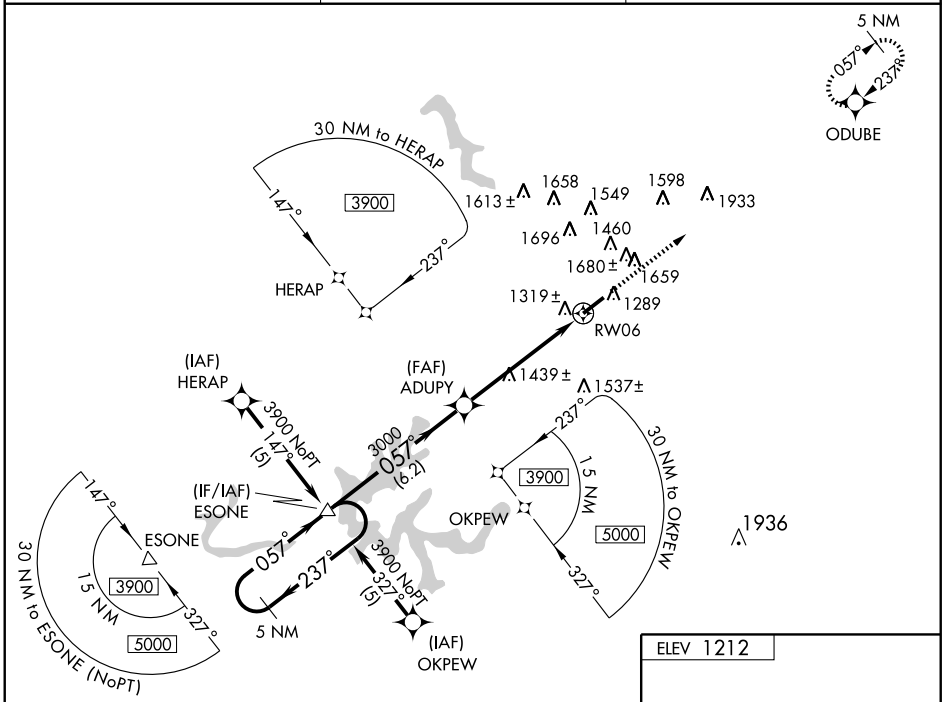
ASOS  
**119.075**

INDIANAPOLIS CENTER  
**124.625 371.925**

UNICOM  
**123.0 (CTAF) 0**

SE-1, 19 NOV 2009 to 17 DEC 2009

SE-1, 19 NOV 2009 to 17 DEC 2009



CATEGORY	A	B	C	D
LPV DA		1462-3/4	250 (300-3/4)	
LNAV/VNAV DA		1589-1 1/4	377 (400-1 1/4)	
LNAV MDA	1700-1	488 (500-1)	1700-1 1/4 488 (500-1 1/4)	1700-1 1/2 488 (500-1 1/2)
CIRCLING	1780-1 1/4	568 (600-1 1/4)	2040-2 1/2 828 (900-2 1/2)	2040-2 3/4 828 (900-2 3/4)

LONDON, KENTUCKY  
Orig 09183

LONDON-CORBIN AIRPORT-MAGEE FIELD (LOZ)  
37°05'N-84°05'W

# RNAV (GPS) RWY 6

MIRL Rwy 6-24 0  
REIL Rws 6 and 24 0