

LONDON, KENTUCKY

AL-720 (FAA)

VOR RWY 6

LONDON-CORBIN AIRPORT-MAGEE FIELD (LOZ)

VORTAC LOZ 116.1 Chan 108	APP CRS 025°	Rwy ldg 5650 TDZE 1212 Apt Elev 1212
---	------------------------	---

⚠ If local altimeter setting not received, use Somerset altimeter setting and increase all MDAs 100 feet. VDP NA when using Somerset altimeter setting.

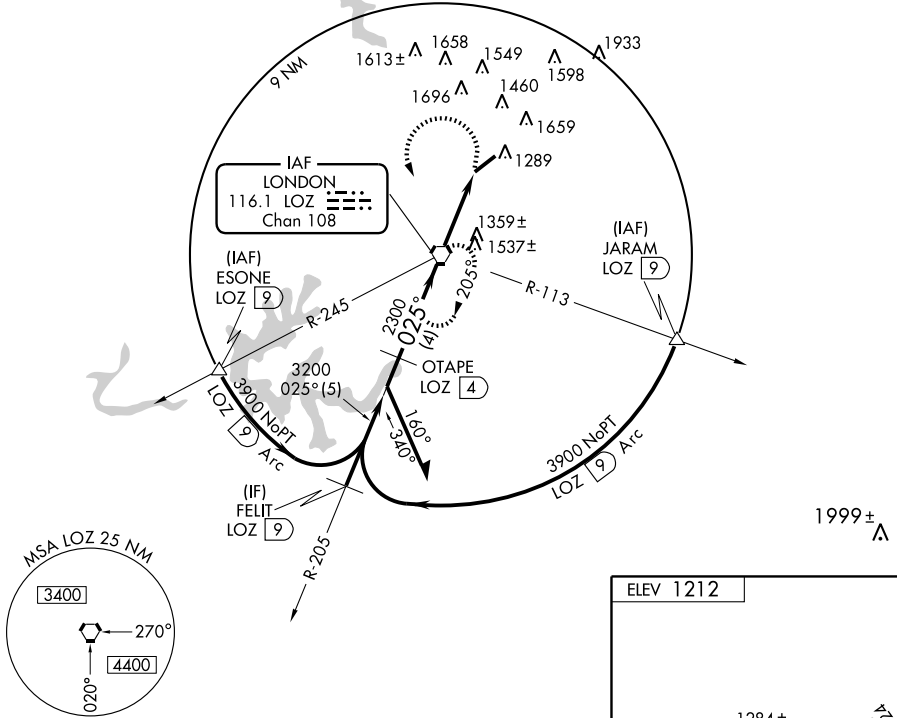
MISSED APPROACH: Climbing left turn to 4000 direct LOZ VORTAC and hold, continue climb-in-hold to 4000.

ASOS
119.075

INDIANAPOLIS CENTER
124.625 371.925

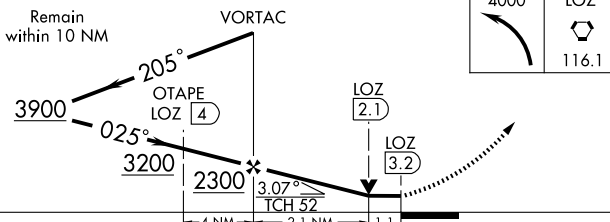
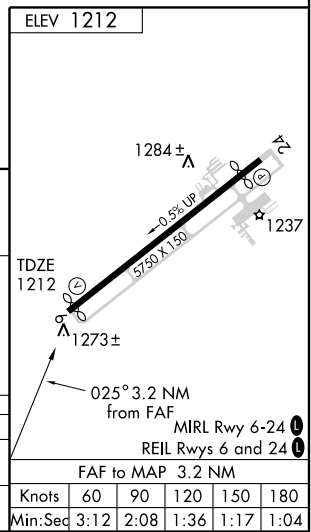
UNICOM
123.0 (CTAF) 0

DME REQUIRED



SE-1, 19 NOV 2009 to 17 DEC 2009

SE-1, 19 NOV 2009 to 17 DEC 2009



CATEGORY	A	B	C	D
S-6	1620-1	408 (500-1)	1620-1¼	408 (500-1¼)
CIRCLING	1780-1	568 (600-1)	2040-2½ 828 (900-2½)	2040-2¾ 828 (900-2¾)

Knots	60	90	120	150	180
Min:Sec	3:12	2:08	1:36	1:17	1:04

LONDON, KENTUCKY
Amdt 13 09183

LONDON-CORBIN AIRPORT-MAGEE FIELD (LOZ)
37°05'N-84°05'W

VOR RWY 6