

OKMULGEE, OKLAHOMA

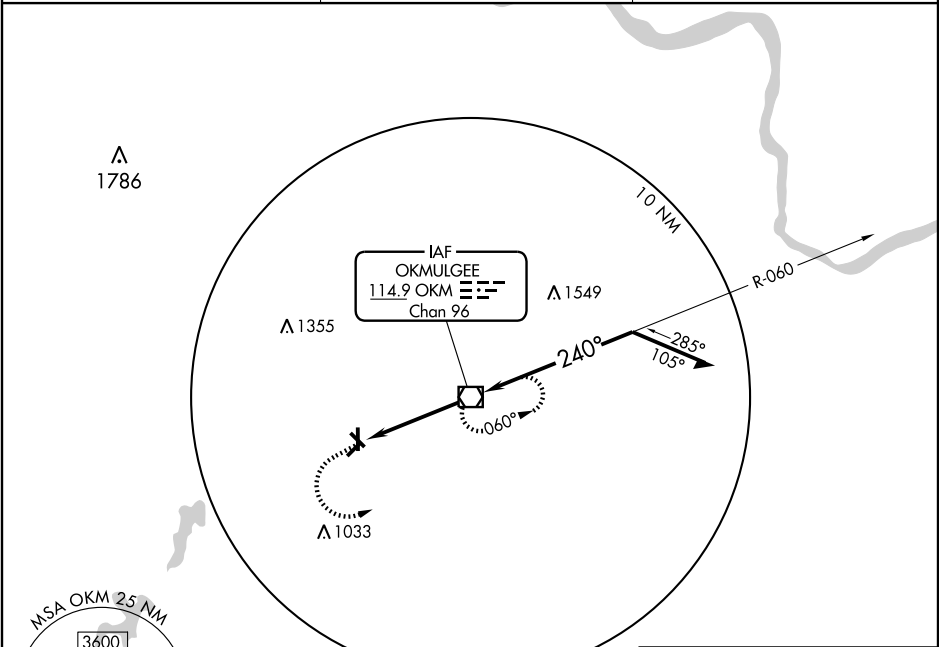
AL-727 (FAA)

VOR/DME OKM <b>114.9</b> Chan <b>96</b>	APP CRS <b>240°</b>	Rwy Idg TDZE Apt Elev	<b>N/A</b> <b>N/A</b> <b>720</b>
---	------------------------	-----------------------------	--

**VOR-A**  
OKMULGEE RGNL (OKM)

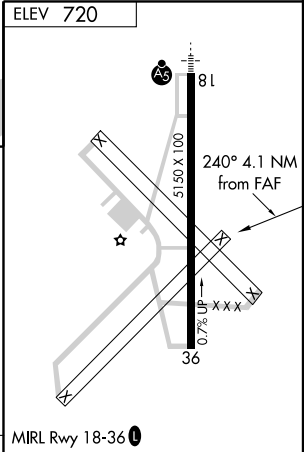
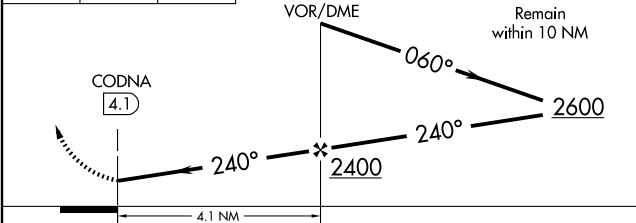
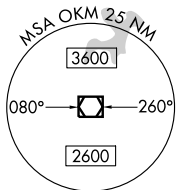
**⚠** NA If local altimeter setting not received, use Tulsa Intl altimeter setting and increase all MDA's 80 feet. **MISSED APPROACH:** Climb to 2600 then left turn direct OKM VOR/DME and hold.

AWOS-3 <b>118.225</b>	TULSA APP CON <b>119.85 338.3</b>	UNICOM <b>123.0 (CTAF) 0</b>
--------------------------	--------------------------------------	---------------------------------



SC-1, 19 NOV 2009 to 17 DEC 2009

SC-1, 19 NOV 2009 to 17 DEC 2009



CATEGORY	A	B	C	D	FAF to MAP 4.1 NM					
	1140-1 420 (500-1)	1180-1 460 (500-1)	1300-1½ 580 (600-1½)	NA	Knots	60	90	120	150	180
CIRCLING					Min:Sec	4:06	2:44	2:03	1:38	1:22

OKMULGEE, OKLAHOMA  
Amdt 1 07298

35°40'N - 95°57'W

OKMULGEE RGNL (OKM)  
**VOR-A**