

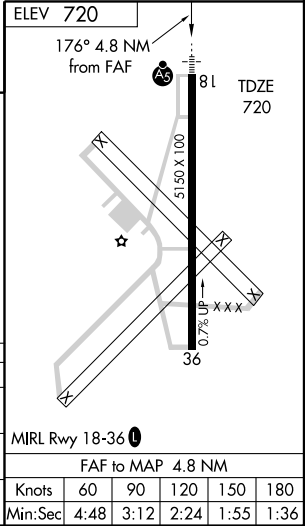
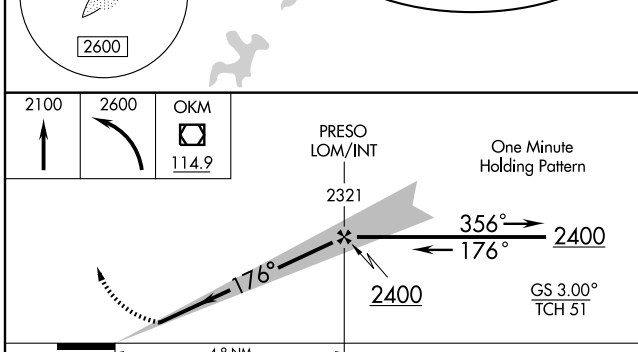
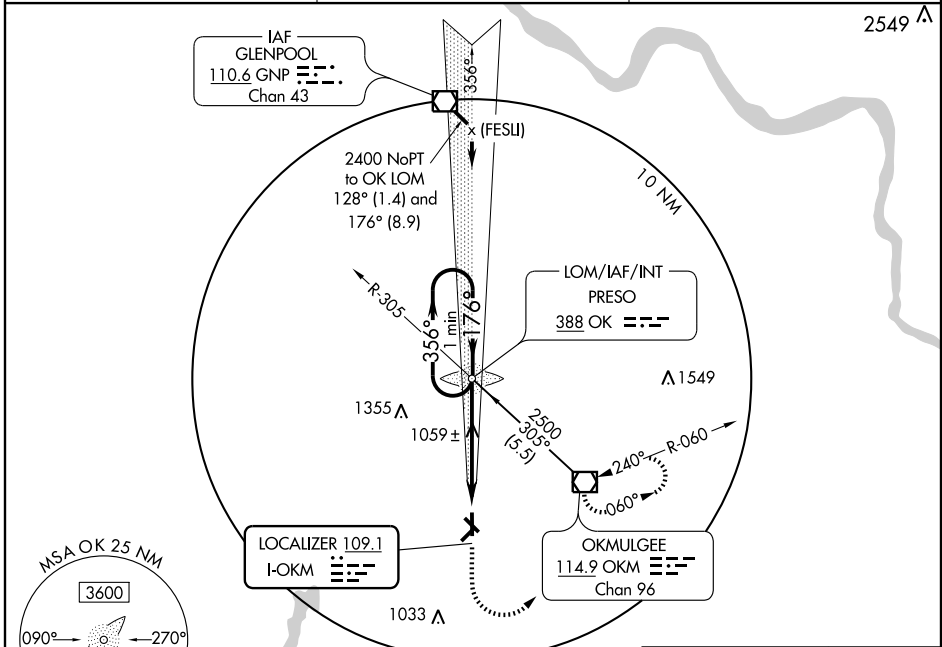
ILS or LOC RWY 18

OKMULGEE RGNL (OKM)

LOC I-OKM 109.1	APP CRS 176°	Rwy Idg TDZE Apt Elev	5150 720 720
---------------------------	------------------------	-----------------------------	---

<p>NA</p> <p>If local altimeter setting not received, use Tulsa Intl altimeter setting and increase all DAs/MDAs 80 feet.</p>	<p>MALSR</p>	<p>MISSED APPROACH: Climb to 2100 then climbing left turn to 2600 direct OKM VOR/DME and hold.</p>
--	--------------	--

AWOS-3 118.225	TULSA APP CON 119.85 338.3	UNICOM 123.0 (CTAF) 0
--------------------------	--------------------------------------	---------------------------------



CATEGORY	A	B	C	D
S-ILS 18	920-½ 200 (200-½)			NA
S-LOC 18	1320-½	600 (600-½)	1320-1 600 (600-1)	NA
CIRCLING	1320-1	600 (600-1)	1320-1½ 600 (600-½)	NA

SC-1, 19 NOV 2009 to 17 DEC 2009

SC-1, 19 NOV 2009 to 17 DEC 2009