

# RNAV (GPS) RWY 18

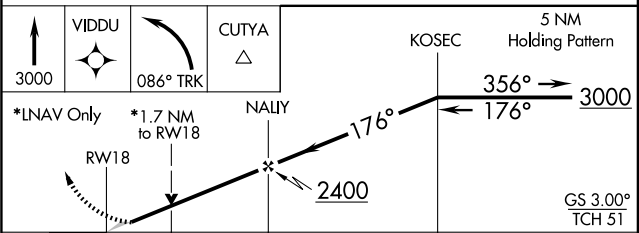
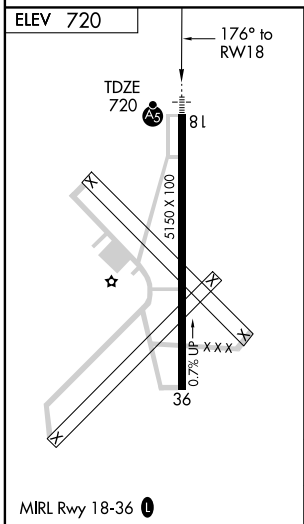
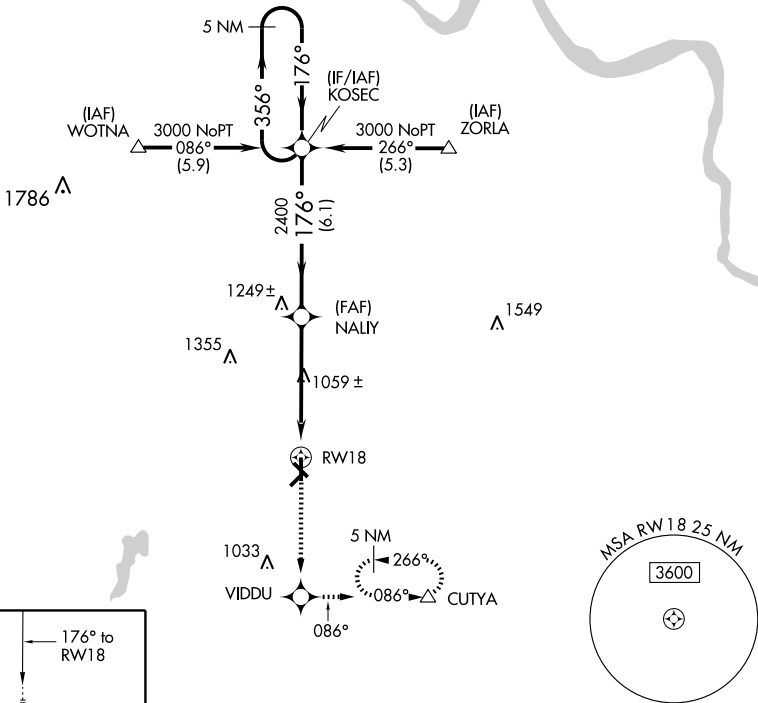
OKMULGEE RGNL (OKM)

WAAS CH <b>82105</b> <b>W18A</b>	APP CRS <b>176°</b>	Rwy Idg <b>5150</b> TDZE <b>720</b> Apt Elev <b>720</b>
--	------------------------	---

<p>▼ If local altimeter setting not received, use Tulsa Intl altimeter setting and increase all DAs/MDAs 80 feet.</p> <p>▲ DME/DME RNP-0.3 NA. VDP NA with Tulsa Intl altimeter setting.</p>	<p>MALSR</p>	<p>MISSED APPROACH: Climb to 3000 direct VIDDU and left turn via 086° track to CUTYA and hold, continue climb-in-hold to 3000.</p>
--	--------------	--

AWOS-3 <b>118.225</b>	TULSA APP CON <b>119.85 338.3</b>	UNICOM <b>123.0 (CTAF) 0</b>
--------------------------	--------------------------------------	---------------------------------

Procedure NA for arrivals at WOTNA on V532 northwest bound.



CATEGORY	A	B	C	D
LPV DA	970-1/2 250 (300-1/2)			NA
LNAV MDA	1320-1/2	600 (600-1/2)	1320-1 600 (600-1)	NA
CIRCLING	1320-1	600 (700-1)	1320-1 1/2 600 (700-1 1/2)	NA