

OKMULGEE, OKLAHOMA

AL-727 (FAA)

VOR-A

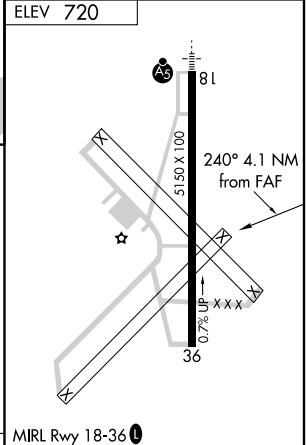
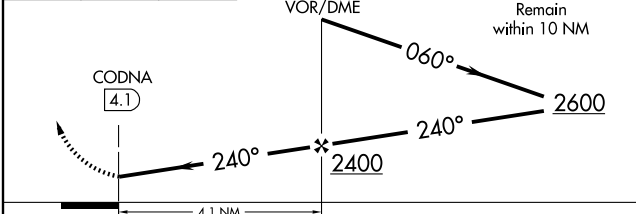
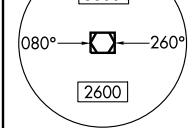
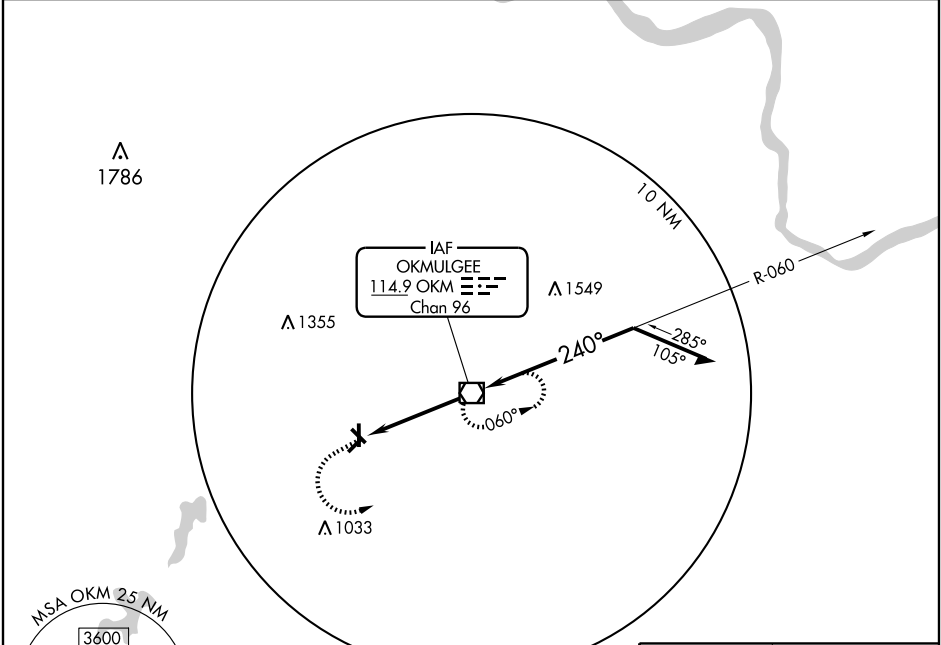
OKMULGEE RGNL (OKM)

VOR/DME OKM <b>114.9</b> Chan <b>96</b>	APP CRS <b>240°</b>	Rwy Idg TDZE Apt Elev	N/A N/A <b>720</b>
---	------------------------	-----------------------------	--------------------------

**▲** NA If local altimeter setting not received, use Tulsa Intl altimeter setting and increase all MDA's 80 feet.

**▲** MISSED APPROACH: Climb to 2600 then left turn direct OKM VOR/DME and hold.

AWOS-3 <b>118.225</b>	TULSA APP CON <b>119.85 338.3</b>	UNICOM <b>123.0</b> (CTAF) <b>0</b>
--------------------------	--------------------------------------	--



CATEGORY	FAF to MAP 4.1 NM			
	A	B	C	D
CIRCLING	1140-1 420 (500-1)	1180-1 460 (500-1)	1300-1½ 580 (600-1½)	NA
	Knots 60	90	120	150
	Min:Sec 4:06	2:44	2:03	1:38
			1:22	

OKMULGEE, OKLAHOMA  
Amdt 1 07298

35°40'N - 95°57'W

OKMULGEE RGNL (OKM)  
VOR-A

SC-1, 11 MAR 2010 to 08 APR 2010

SC-1, 11 MAR 2010 to 08 APR 2010