

RNAV (GPS) RWY 16

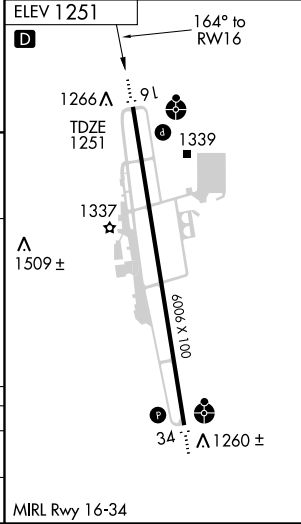
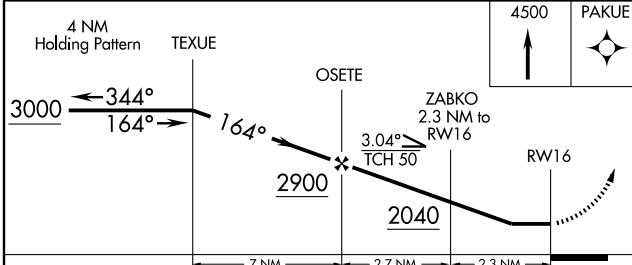
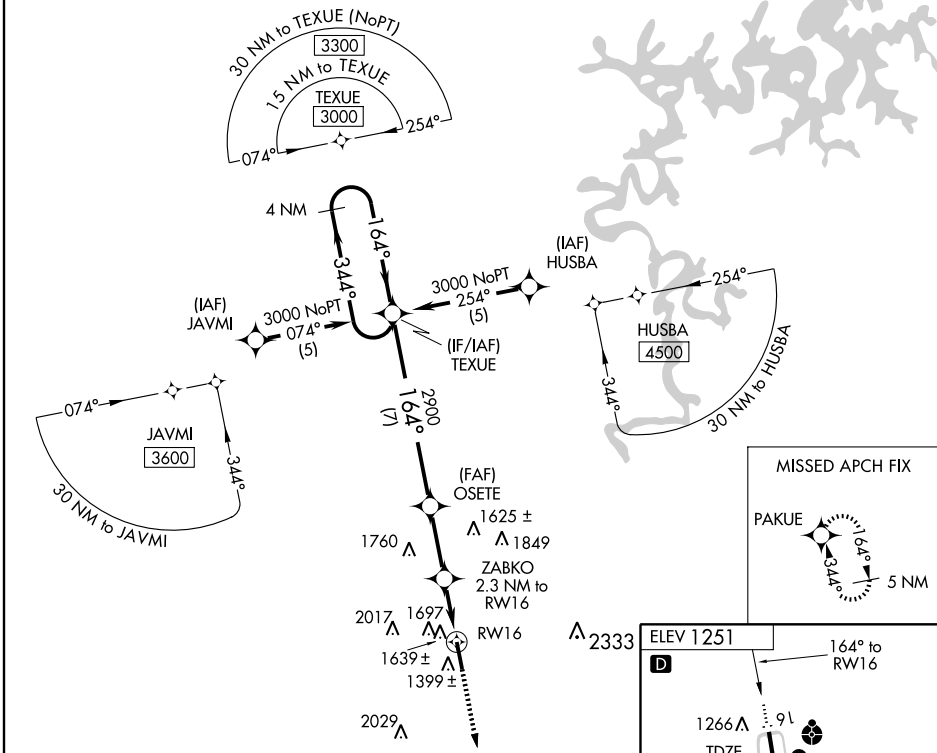
FAYETTEVILLE/ DRAKE FIELD (FYV)

APP CRS	Rwy Idg	6006
164°	TDZE	1251
	Apt Elev	1251

⚠ Inoperative table does not apply. DME/DME RNP-0.3 NA. Visibility reduction by helicopters NA. When local altimeter setting not received, use Springdale altimeter setting and increase all MDA 40 feet. Increase LNAV Cat C/D visibility ASR ¼ mile. Circling NA east of Rwy 16-34.

ODALS
 MISSED APPROACH: Climb to 4500 direct PAKUE and hold.

ATIS 119.575	RAZORBACK APP CON* 121.0 244.57	DRAKE TOWER* 128.0 (CTAF) 0 371.9	GND CON 121.8
------------------------	---	---	-------------------------



CATEGORY	A	B	C	D
LNAV MDA	1920-1	669 (700-1)	1920-1¾ 669 (700-1¾)	1920-2 669 (700-2)
CIRCLING	2000-1 749 (800-1)	2000-1¼ 749 (800-1¼)	2000-2¼ 749 (800-2¼)	2260-3 1009 (1100-3)

SC-1, 19 NOV 2009 to 17 DEC 2009

SC-1, 19 NOV 2009 to 17 DEC 2009